

# Green Links

September 2021

The Monthly Village Magazine of Cockfield

**Sunday**  
**12th September**  
**12 noon to 3.30 pm**

**Cockfield**  
**Produce,**  
**Flower &**  
**Craft**  
**Show**

**Cockfield Village Hall**

The flyer is decorated with various illustrations: a basket of produce (onions, mushrooms, carrots) in the top left; a banner with '13th' and '10' in the top center; a bouquet of flowers in the top right; a bottle of wine and three apples on the right side; a bottle of wine and a bouquet of carrots on the right side; a pink flower and a small potted plant on the left side; a large pink flower, a small potted plant, and a sewing machine on the bottom left; a cake, a ball of yarn, a bouquet of flowers, and a sewing machine on the bottom right; and three green apples at the bottom right.

## Green Links Copy Deadline!

Please note all copy for the October issue must be  
with me by 15th September please

Janne Cutting-Keyton, Newholme, Smithwood Green,  
Cockfield. IP30 0JQ

01284 828264 or [janne@twerbs.co.uk](mailto:janne@twerbs.co.uk)

### Would you like to Subscribe to Green Links

There are currently over 400  
subscribers to Green Links in  
Cockfield and the  
surrounding villages.

An annual subscription is  
£3.00 payable in August.

The magazine is  
delivered to your door by a  
team of local volunteer  
distributors.

Please contact  
01284 828264  
for further details

### Cockfield Village Hall

Available for hire at very  
reasonable rates

Please contact  
June Pettit  
for bookings or for  
further details  
[cockfield.org.uk/villagehall](http://cockfield.org.uk/villagehall)

**Please spread the  
word about our  
super village hall,  
huge car park  
and full facilities**

## GREEN LINKS ADVERTISING

To place an advertisement in Green Links  
or enquire about our rates please contact

Sue Harrison at  
[sue.harrison42@gmail.com](mailto:sue.harrison42@gmail.com)

# Green Links



The Monthly Village Magazine of Cockfield  
Edition 4– No 168 September 2021

Chairman and Distribution  
Editor  
Secretary  
Advertising Manager

David Simpson  
Janne Cutting-Keyton  
Morag Kelly  
Sue Harrison

The summer is drawing to a close, the harvest is mostly in, the nights are certainly drawing in and there is that autumnal smell to the air and the threat of the first cold nights, As the children return to school, Harvest Festival is celebrated and the Community Council hosts Cockfield Back Together and the Cockfield Show the village settles back into its steady rhythm.

As the village continues to welcome new residents lots of us will have new neighbours which hopefully will soon become new friends and some of these newcomers will embrace village life and become involved in the clubs and societies within the village. We can all help by getting to know our neighbours and encouraging them to join in. Along with the monthly cinema and coffee mornings the Quiz on 13th November would be an excellent introduction, you don't have to enter as a 'team' just come along and be teamed-up on the night.

So lets all draw a deep breath, be thankful that the last 18 months are over and continue to pull together to make Cockfield the special place it surely is.

Janne

[www.cockfield.org.uk](http://www.cockfield.org.uk)

The Editor and Management Committee cannot be held responsible for the accuracy of articles or for any of the claims made by any advertiser and reserve the right to alter, shorten or refuse any items submitted for publication. All copyrights acknowledged.

## Cockfield, St Peter's Summer Lunch 2021

The garden was looking beautiful, the tents were erected, the food was prepared, the wine was chilling, the guests were arriving and ..... the heavens opened.

However the spirit of the occasion was not in the least dampened as diners enjoyed a sumptuous spread while catching up with friends not seen for many months. The awarding of a trophy to the winner of the paper plane competition encouraged a large entry of (mostly failed) aeronautical engineers, all cheered on by the crowd!

Thank you to all who contributed to the success of the event and especially to those who prepared the feast, erected tents, fetched and carried, then cleared it all away at the end of a most enjoyable day. And finally, a huge thank you to Jennie and David Marshall for allowing us the use of their lovely garden – the perfect venue.

MK

## Your Annual Subscription for Green Links is now due!

Please have the money ready for your distributor to collect.

- √ 12 Copies
- √ Delivered to your door
- √ Good Value
- √ Good Read
- √ Useful Information
- √ Interesting Articles
- √ Annual Subscription just £3.00



**COCKFIELD COMMUNITY CINEMA PRESENTS**  
**Dream Horse (PG)**

**Friday 24<sup>TH</sup> SEPTEMBER**

Cockfield Village Hall

Doors Open: 7pm – Film starts: 7:30pm

Tickets on the door

Adults: £4.50 / Under 16s: £3.00

Raffle, Refreshments & Licensed Bar available from 7pm



The true story of Dream Alliance, an unlikely racehorse bred by small-town bartender Jan Vokes. With very little money and no experience, Jan convinces her neighbours to chip in their meagre earnings to help raise Dream and compete with the racing elites. Their investment pays off as Dream rises through the ranks and becomes a beacon of hope for their struggling community...

**MONTHLY SCREENINGS**  
**4<sup>TH</sup> FRIDAY OF THE MONTH**  
**FOR FUTURE SCREENINGS**  
**VISIT: [www.cockfield.org.uk](http://www.cockfield.org.uk)**



## SUFFOLK CHURCHES RIDE AND STRIDE

**SATURDAY 11TH SEPTEMBER 2021**

Norman Gregory (99, WW2 Bomber command, Legion d'Honneur) and Norman Kelly (a mere 71, retired Tea Planter) are participating once again in the annual Suffolk Historic Churches Trust (SHCT) Bike Ride to raise funds for the charity which provides invaluable support to maintain our beautiful Suffolk Churches. 50% of the money raised goes to maintaining St Peters Church Cockfield.

If anyone else would like to cycle or walk to visit churches and raise money, please contact me, Jill Box on the numbers below. I have sponsor forms and information on all churches in the area that will be open on that day. It would be brilliant if we had more riders taking part. If you are unable to cycle perhaps you would be happy to spare an hour to sit at St Peters church and welcome cyclists, if so please let me know.

Both Normans have sponsorship forms and a fundraising site, please support them.

<https://www.justgiving.com/fundraising/thecockfieldnormans>



# Thorpe Morieux Garden Party

At Thorpe Hall

19th September 2pm on - Entry £2

(beside the church)

Grand Draw £200 1st Prize + others

Prizes for the Best Dressed Beard, Real or False  
and Best Decorated Summer Bonnet

Pre-Loved Stall - Teas - Children's Races - Garden Tour - Stalls

Art and Crafts for sale in St Mary's Church  
y members of Heart of Suffolk Art Group

Amy Robinson will be doing walk about puppetry  
throughout the afternoon

Plant and Gardening Stall, by Thorpe Mx and District Garden Club

Car Boot pitch £5 prior booking only call 01284 827039

## KEVIN SEGGIE Electrical Services

30 Years Experience

Part P Qualified      ECA Member      No Job too small

Domestic/ Commercial/ Industrial Work undertaken

Burglar Alarms fitted      Insurance testing

Free Estimates      Fully Guaranteed

Tel: 01284 830786      Mobile: 07768 108157

e-mail: kevinseggie@yahoo.com

## **SUFFOLK REVIVE A DRIVE**

Would you like your drive or patio restored to a newly laid finish.

Improve both the appearance and value of your property.

**HIGH PERFORMANCE PRESSURE CLEANING**

**PATHS, PATIOS, DRIVEWAYS, WALLS, GARDEN FURNITURE**

**DECKING, TENNIS COURTS, STABLES, SWIMMING POOLS and MORE**

**RE-POINTING, RE-SANDING AND SEALING ALSO AVAILABLE**

**TARMAC RE-DRESSED - REPAIRS UNDERTAKEN**

Phone for a FREE quotation Tel: MARK 01284 828294 or 07833 582636

# Cockfield W.I.

## August Meeting



President Brenda Cantlay welcomed members and congratulated both Michelle Callinan and Virginia Hull on their recent engagements. Having dispensed with the business which covered courses available from SWFWI, notice of the resolution process, and a request to provide refreshments at the Cockfield Produce Show, Brenda introduced the guest speaker, the first for eighteen months.

Adam Whymark is the manager of the Bury St Edmunds branch of Majestic Wines and he capably guided us through tasting a selection of wines from around the world. He described the first wine from Italy as like Prosecco's "Grand Cru" as the grapes are grown on extremely steep slopes and everything has to be done by hand, often with the help of a harness.

We then tasted two French wines, a Rose and a Chardonnay and were encouraged to sniff the wine before tasting to identify the fruity notes. Then followed a Sauvignon Blanc from New Zealand which was full of flavour, described as gooseberry, guava and elderflower and proved a favourite with the members. And on to the Reds ..... the light and fruity Pinot Noir came from Romania where hot days and cold nights provide perfect conditions for growing this variety of grape.

The Chateau Recougne, a claret from the Bordeaux region of France, was rich, brambly and spicy in flavour, perfect as an accompaniment to red meat.

The final offering, from Chile, was a rich, deep red Merlot with a velvety texture and would be perfect with roast beef. Grown between the Andes and the coastal range, conditions there are ideal to slowly ripen red grapes thus intensifying the flavours.

As you can imagine a most convivial evening was enjoyed as we sipped the wine and nibbled the nibbles and Adam was thanked for his informative presentation.

The next meeting is on 2 September when the guest speaker will be Cockfield's own celebrity, Mr Norman Gregory. We look forward to welcoming members and their guests. Report MK

## Cockfield Community Coffee

### 4th Thursday of the month

**Cockfield Village Hall**  
**Committee Room**  
**10.30am - 12 noon**



No Charge but donations are welcome  
Enquiries please email [wi@cockfield.org.uk](mailto:wi@cockfield.org.uk)





The Cockfield Flower, Fruit,  
Produce and Craft Show 2021



Flower, Fruit, Produce and Craft  
Items displayed

FREE ENTRY



Sunday 12th September  
Cockfield Village Hall  
Public Entry from 12 noon  
Hope to see you there

The Cockfield Show 2021  
Timetable



8.00-9.30am Handing in Exhibits  
10-12 noon Judging  
12 noon Public Entry  
3.00pm Collection of Exhibits  
Auction of donated exhibits  
3.30pm Show Closes



Cockfield Village Hall



## Jeffreys Green, Cockfield

Update 15<sup>th</sup> July 2021

### **AFFORDABLE HOMES FOR COCKFIELD FOREVER**

Since my last update residents have received keys to their new homes and are hopefully settling in well. It's been great to see these homes being lived in at last, and we wish everyone all the best.

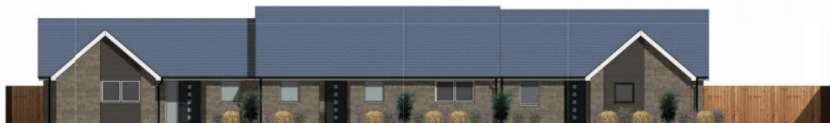
These new affordable homes, and the other Orwell homes in the village, are protected to remain affordable into the future and for people with an eligible connection to Cockfield to be given priority when they are allocated. If you weren't successful, or it wasn't the right time for you this time round, please remember that homes will become available in the future. Our Housing Officer will contact the Parish Council when we have a vacancy, and please keep an eye out on Gateway to Homechoice and ensure your application is live so you're ready to bid.



### **AFFORDABLE BUNGALOWS READY & AVAILABLE SOON!**

The construction of the three bungalows on behalf of Mid Suffolk District Council is progressing well and the homes are due for completion in mid-September.

Babergh District Council will be advertising these properties for rent on Gateway to Homechoice with adverts likely to go live in the first weeks of August. There are two 2 bed bungalows and one 1 bed bungalow. You can access Gateway to Homechoice at <https://www.gatewaytohomechoice.org.uk/>



**SHARED OWNERSHIP HOMES – LAST CHANCE!!**

At the time of writing, we have two shared ownership homes still available for sale – a 3 bed house and a 2-bed house.

If you're interested in becoming a shared owner at Jeffrey's Green please contact Sandra Scott or Karen Suddes, Orwell's Sales Team, on 07749 417399 or at [homesales@orwell-housing.co.uk](mailto:homesales@orwell-housing.co.uk).



**MARKET SALE HOMES COMING SOON**

SEH are continuing work on site with the first phase of 11 market sale homes being developed by Orwell Homes, the private sale subsidiary of Orwell Housing.



These plots will be a selection of 2, 3 & 4 bedroom houses and 2 bedroom bungalows due for completion in February/March 2022.

We are aiming to have a sales launch in September, with a show home available to view in October.

Prices are not yet released but should you wish to register an interest please contact Sandra Scott or Karen Suddes, Orwell's Sales Team, on 07749 417399 or at [homesales@orwell-housing.co.uk](mailto:homesales@orwell-housing.co.uk). They will be able to take your details and contact you when more information is available.



Thank you and I hope you have a wonderful summer  
Dawn Edwards  
Development Manager  
Orwell Housing Association

**Drinkstone Annual Sale Trail 2021**

**Venue: Drinkstone Village Hall (and surrounding village),**

**Saturday 11th September 2021 – 9.30am – 2.30pm**

# Garden Tips for September 2021

## Flowers, Bulbs and Herbs

- Divide herbaceous perennials. This will keep your plants healthy and creates additional plants for free.
- Collect seed from hardy annuals such as Larkspur, Cosmos and Calendulas.
- Tidy up your pots in readiness for planting up with violas, pansies and spring bulbs etc. For the winter raise your pots of the ground either by placing on pot feet or bricks. This prevent waterlogging.
- Sow hardy annuals such as Cerinthes, Scabiosa, Ammi and cornflowers directly on to prepared seedbeds for an early display next summer.
- Plant spring flowering bulbs such as daffodils, crocus and hyacinths.
- Direct sow hardy annuals where they are to flower. For example cornflowers, annual poppies and poached egg plants.
- Lift gladioli corms. Dry them off and store over winter in a frost-free shed or garage.



## Fruit and Vegetables

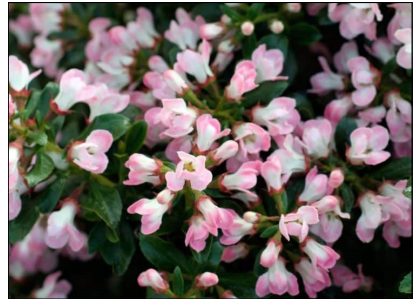
- Keep harvesting crops. If you have a glut of produce think about making jam, chutneys and pickles.
- Pinch out the tips of outdoor cordon tomato plants this will encourage the production of ripe fruit.
- Spread out newly dug potatoes to dry for a few hours before storing them in paper or hessian bags in a cool dark place.
- Help pumpkins to ripen by removing any leaves which are shadowing the fruit. Try and raise pumpkins and squashes off the ground by placing on a piece of wood or a layer of broken pots you may have. This will prevent rotting.
- Cut bean and pea plants back to ground level once they have finished cropping. Leave the roots in situ to breakdown and release nitrogen back into the soil.



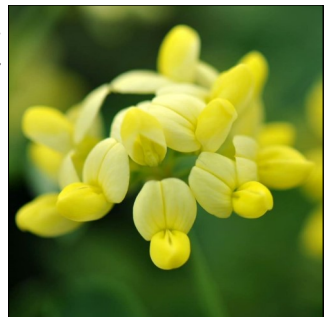
- Pot up strawberry runners by detaching from the parent plant to provide you with extra plants next season.
- Pick off any rotting fruits from your fruit trees as they will spread disease if left.
- Start sowing hardy varieties of broad beans and peas for early crops next year.

### Trees, Shrubs, Hedges and Climbers

- Prune any late summer flowering shrubs after they have finished flowering. For example the common deciduous honeysuckle (but not the evergreen varieties which should be pruned in early spring). Escallonia – Prune back the shoots that have flowered. Pyracantha – you can trim back the non-berrying shoots back to the visible berry trusses or spurs to maintain a good shape.
- Conifers hedges - Trim back to neaten and control height.
- Now is an ideal time to plant new trees and shrubs. You will find that they will flourish and establish quicker at this time of year. Don't forget to check the eventual height and spread to ensure that they won't out-grow their surroundings or block precious light.
- Some of my favourites are: Escallonia (neat evergreen shrub which has dainty pink or white flowers during July and the bees and butterflies love it. Sorbus rosea 'Rosiness' which is a small compact tree which provides year round interest, soft pink flowers in spring and in the autumn red leaves and pink flushed berries. Another shrub worth a mention is the Coronilla glauca Citrina. This shrub has pale lemon pea like scented flowers with



blue green evergreen foliage. It starts flowering in December and should stop in mid spring but mine is still flowering. Likes full sun and a sheltered position.



## Lawns

- The lawn will benefit by scarifying (scraping out moss with a fine tined rake) and aerating with a garden fork. Follow this with the application of a proprietary Autumn Lawn fertiliser.

## General Maintenance and Planning

- Clear out and clean your Greenhouse ready to store tender plants and seedlings over winter.
- Remove shading towards the end of the month to allow maximum light available.
- Water greenhouse plants early in the day so the greenhouse is dry by the evening. Damp cool nights can encourage botrytis.
- In readiness for colder, damper weather raise your pots off the ground either by placing on pot feet or bricks. This will prevent waterlogging.
- If you have a pond you should continue to remove blanket and duck weed. This should be left adjacent to the pond to allow any wildlife to return to the pond. After a couple of days you can safely remove the debris to your compost heap.
- Dead leaves should be removed from water lilies. It is also a good time to divide water lilies and other pond plants.
- Net ponds before the autumn leaf fall.
- Look out for spring bulbs which should be available in the Garden Centres and Nurseries now.
- Water is such a precious commodity so consider installing a water butt.



- Create a compost bin using old wooden pallets. For leaf fall use fine chicken wire and robust bamboo canes.
- Improve clay soil by incorporating horticultural grit and organic matter before the ground becomes too wet or frozen.
- 

Happy Gardening relax and enjoy all your hard work

Kate Ransom



# Cockfield Parish Council

## Notes

### Summary report on the Ordinary Parish Council Meeting held on 29 July 2021

Please note: 'To obtain a copy of the full formal minutes of this meeting, please email the Parish Clerk, [parish.council@cockfield.org.uk](mailto:parish.council@cockfield.org.uk)'

#### **Outstanding / on-going actions from previous meetings:**

**Telephone Kiosks;** Following Cllr Turner's update in June that the cost of re-siting the Parish Council owned telephone kiosk from outside the Post Office to the corner of the Great Green was prohibitive and not without risk of damage to the kiosk, Cllr Turner agreed to submit a costed proposal to the August meeting for an alternative housing for the defibrillator at Great Green.

**Turfing at Great Green;** Cllr Brinkley advised that he has deferred until the Autumn, the purchase of 200m<sup>2</sup> of turf to repair the area around the Adventure Playground, Great Green and is monitoring the rate of grass regrowth which may avoid the need for turfing.

**Public Participation;** The Clerk has reported the missing Cockfield sign (at the A1141 approach to Stow Hill, Cockfield from the Lavenham direction) to SCC on their website and is awaiting a response.

**Bandstand;** In Cllr Morley's absence, there was no progress update on the acquisition of a quotation for cleaning and painting the inside and the outside of the Bandstand, Great Green. Cllr Morley to provide update at the August meeting.

**SCC School Bus Service;** Cllr Southgate has written to Rachel Hood, SCC Cabinet Member for Schools, challenging the School Bus Policy and its impact on Cockfield residents and is awaiting a response.

**Pavilion Balustrade;** The Clerk had obtained one quotation to repair the Pavilion Balustrade, but two other contractors had declined to quote. The Clerk is awaiting a meeting with a 4<sup>th</sup> Contractor and Cllr Morley was also seeking a quote. An update will be provided to the August meeting.

**Pavilion Hire (football club grant);** Cllr Golding to advise the Clerk, who the letter should be addressed to its content and the Clerk will draft a letter for the Chairman to sign, confirming a long-term commitment from the Parish Council to a hire agreement of the Pavilion by Cockfield United.

**Glebe Land;** Cllr Morley & Cllr Webster met at the allotments to consider the siting of new gates and entrance widening options onto the A1141 and will be seeking quotations for gates and fencing.

**Asset Volunteers;** Due to the absence of 3 Cllrs, the action for Cllrs to consider volunteering to assume responsibility for Assets on the Maintenance Register previously allocated to ex-Cllr Williams, was deferred until the August meeting.

**Local Needs Housing;** Posters advertising Orwell Housing opportunities at Jeffrey's Green produced by Cllr Cutting-Keyton have been posted on the PC Notice boards by the Clerk.

**Highways and Emergencies;** The Clerk wrote to Paul West, the new SCC Cabinet Member responsible for SCC Highways, complaining about their delay in verge cutting and lack of pavement maintenance along the A1141. SCC Highways have agreed to skirt the pavements from Stow Hill to the Windsor Green turning, but maintain that they had cut the C & U Road verges in June. However, the grass has not been cut since May when the PC's contractor last cut it.

#### **Public Participation Session:**

In Suffolk County Cllr's absence, there was no update provided.

In District Cllr Maybury's and District Cllr Arthey's absence, there was no update provided.

There were no issues raised by members of the public.

**Planning Applications Received - It was noted that the following applications had been referred to the Parish Council for consultation;**

**DC/21/03681:** Application for Outline Planning Permission (all matters reserved) Town and Country Planning Act 1990 - Erection of 8 No self-build dwellings (re-submission of part of Hybrid Application approved under DC/17/05332). Land Adjacent To, Mackenzie Place, Cockfield, **The Parish Council Supports this Application.**



**DC/21/03719:** Application under S73a for removal or variation of a condition following approval of DC/19/02020 dated 18/09/2019. Town and Country Planning Act 1990 Reserved Matters for 10 No dwellings. Variation of condition 2 (Approved Plans & Documents) - Amendment to positions of Plots 05, 06 and 07 including addition of single garage to Plot 06 and double garage to Plot 07 (as approved under Outline Application DC/19/04755). Additionally, change of surface material for the proposed driveways and change of fencing. Details as per drawing DAPA\_1431\_400\_00. Land to the West of Plough and Fleece Inn, Great Green, Cockfield, Suffolk. [The Parish Council Objects to the proposed surface material and fencing changes and surface water drainage solution, Full details of the Parish Council's response can be found on the BMSDC Planning Website.](#)

**DC/21/00279:** Submission of details for reserved matters following approval of DC/18/00474 and subsequent DC/20/04440 for the appearance, layout, scale and landscaping of Plot 1. (Phased development for the erection of 3 No dwellings). Location: Land at Bury Road, Cross Green, Cockfield, IP30 0LG. **The Parish Council Supports this Application.**

**DC/21/03817:** Application under S73 for removal or variation of a condition following grant of planning permission DC/21/02621 dated 16/06/2021. Town and Country Planning Act 1990. To vary Conditions 4 (Written Scheme of Archaeology) 5 (Archaeology Timetable) 7 (Operating Hours) and vary Condition 11 (Surface Water Management). Corner Farm, Lawshall Road, Cockfield, Suffolk IP30 0JP. **The Parish Council has No Comments on this Application.**

**DC/20/04886:** Appeal Reference: APP/D3505/W/21/3269479 Appeal by: R East & J Sadler Proposal: Full Planning Application - Change of use of public house to residential dwelling. Plough and Fleece Inn, Great Green, Cockfield, Bury St Edmunds Suffolk IP30 0HJ. **The Parish Council objected to the original Change of Use Application and Objects to the Appeal. Full details of the Parish Council's response can be found on the Planning Inspectorate's Website. Cllrs agreed that the Parish Council should apply to register the Plough and Fleece as an Asset of Community Value (ACV)**

**DC/21/03753:** Application for Listed Building Consent - Remove areas of cement and masonry paint from external render, repair with lime plaster and re-decorate with limewash. Installation of 2no. cast iron vents and 1no. vented pantile. Internal and external repairs and alterations as detailed in the Schedule

of Works and Heritage Statement. The Abbey Cottage, Windsor Green, Cockfield, Suffolk IP30 0LY **The Parish Council Supports this Application.**

**DC/21/04061:** Householder Planning Application - Erection of a two-storey side extension following demolition of existing garage: Vine Cottage, Chapel Road, Cockfield, Suffolk IP30 0HE. **The Parish Council Supports this Application.**

#### **Plan Decisions Received from BMSDC;**

**DC/21/03113:** Non-Material Amendment to DC/18/00306 and DC/19/02020 - Amendment to positions of Plots 05, 06 and 07 (as approved under Outline Application DC/19/04755). Land to the West of Plough and Fleece Inn, Great Green, Cockfield, Suffolk IP30 0HJ **Decision: Non-Material Amendment was Refused.**

**DC/21/03177:** Notification for works to trees in a Conservation Area - Remove approximately 14no Conifer trees (Forming Hedge) and Replant with Laurel Candleford House, Cross Green, Cockfield, Bury St Edmunds Suffolk IP30 0LG. **Decision: BMSDC do not wish to object.**

**DC/21/03129:** Householder Planning Application - Erection of a first floor extension over existing single storey side extension and replacement of existing conservatory with single storey rear extension Jaydam House, 8 Great Green, Cockfield, Suffolk IP30 0HQ. **Decision: Planning Permission has been Granted.**

**DC/21/03496:** Application for works to a tree/s in a Conservation Area - Prune back 1No Acacia tree(T1) large branch overhanging the patio to an appropriate growing point. Prune back 1No Acacia tree (T2), overhanging branch over the garage to an appropriate growing point. Removing any dead branches on both trees. Sketch plan 1 Hope House, Cross Green, Cockfield, Suffolk IP30 0LG. **Decision: BMSDC do not wish to object.**

**Finance;** It was agreed to accept a quotation of £300.00 for the supply and installation of second hand 4-rail cattle fencing to sides of bridge in Jeffrey's Green + a contingency of £200.00 for additional works. This would then complete the refurbishment works.

**Cockfield Emergency Plan;** It was agreed that the Cockfield Emergency Plan (circulated to Cllrs in advance of the meeting) was adopted. The proposal was carried. Cllr Southgate thanked Cllr Webster for all his work in updating and re-issuing the Plan.

**Neighbourhood CIL;** In Cllr Morley's absence, the update on the Feasibility of the new Bus Shelter at Mackenzie Place was deferred until the August meeting.

**Speed Awareness Proposals;** It was agreed that PC purchase and install 2 No. SID mounting posts and Playground and speed limit signage, along with 2 No. Children's Playground signs and support posts at the Great Green at a cost not to exceed £500.00.

It was agreed to consider the proposal to purchase an additional SID at a cost of approximately £3,200.00 using Neighbourhood CIL funding. The Clerk was asked to check that the purchase was permitted under CIL Rules. Further to check the CIL budget availability along with other potential CIL expenditure and report at the August meeting.

**Queens Platinum Celebrations;** Cllr Cutting-Keyton advised Cllrs that the Queens Platinum Celebrations would be held in June 2022. Given the success although hard work on the previous 2012 event, it was proposed by Cllr Brinkley and seconded by Cllr Southgate that Cllr Cutting-Keyton should explore the feasibility of a larger village celebration. Cllr Cutting-Keyton agreed to set up a multi-group Village working party.

**Pavilion Update;** The Clerk updated Cllrs on the completion of the refurbishment work and of the outstanding snagging items, which he will pursue with the contractor.

**Parish Council Vacancy;** The Clerk advised that BMSDC had confirmed that the Parish Council are free to co-opt to fill the Cllr vacancy. Cllr Southgate had drafted an advert for publication in Green Links and on the Village website. The Parish Council will consider any responses received at the September meeting.

**Pedestrian Footpath/Verge Cutting 2021 & 2022;** It was agreed that in the absence of any cutting by SCC, the PC instructs its contractor to urgently cut the verges on Cockfield's C & U roads for safety reasons at a cost of £400.00 + VAT. The Clerk confirmed that he will include 3 No. PC Verge grass cuts in the 2022/23 Budget and Precept.

**Maintenance Schedule and Asset Management;**

**Maintenance Calendar** (Full review, February, June, October only)

**Maintenance Calendar** (Full review, February, June, October only)

Cllr Southgate asked for lead Cllr volunteers for all ex-Cllr Williams' assets. Cllrs agreed to consider and respond before the next meeting.

**Maintenance Matters by exception;**

**Glebe Land:** Cllr Webster to provide costed fencing proposal for the August meeting.

**Cemetery;** Cllr Turner advised that a solution had been reached to minimise problems with grass cutting covering certain graves. Cllr Turner asked that Cllr Morley (Tree Warden) visit the cemetery and advise whether the tree growing up to the power cables should be reduced in height.

**Village Hall Car Park;** Cllr Cutting-Keyton asked whether the hedges around the Village Hall car park and in front of the entrance could be trimmed. The Clerk agreed to check hedge cutting dates with our contractor.

**Third Party Liaison;** Police/Fire: Cllr Cutting-Keyton confirmed that the 'Design Out Crime' Officer's report had been received and circulated to Cllrs. Further discussion required before any action is taken.

**Correspondence;** BMSDC had written to residents asking them to complete the on-line Annual Canvas of Electors 2021 questionnaire.

Cllr Morley had drafted a Letter of Thanks for the Clerk to send to the retiring Head of Thurston Community College.

Several emails received complaining about grass cuttings on cemetery memorials and plinths. Cllr Turner and the Clerk had spoken with our contractor and a solution identified.

A letter of complaint about SCC's lack of pavement maintenance resulting in a trip and fall to a resident, was received, and forwarded to the SCC Cabinet Member for Highways.

**The Parish Council may be contacted through the Clerk, Steve Ball  
by email at: [parish.council@cockfield.org.uk](mailto:parish.council@cockfield.org.uk) or 01284 828987  
Next Meeting - The next Ordinary Meetings of the Council will be held  
on Thursday 30th September 2021 at 7.30pm  
in Cockfield Village Hall**

# Cockfield Parish Council – Vacancy for one councillor

Some of you may be aware that a long-standing Councillor Rodney Williams decided to “retire” after 14 years of service on the Parish Council.

Therefore, the Parish Council are seeking to co-opt an additional member to the Councillor, and we are again reaching out to the village.

## Why become a Parish Councillor?

Parish Councillors are elected representatives who volunteer their time freely to work on behalf of local residents. Individuals may also be co-opted at the discretion of the council if there is a vacancy. By becoming a parish councillor you can become a voice for your community, somebody who residents will look to for help, guidance and support. You will be involved in local decision making and strategic planning for the benefit of the people you serve. Seeing your community change for the better, as a result of decisions you have helped make, is something that can give you a sense of achievement and pride.

## What are the roles and responsibilities involved?

A Cockfield Parish Councillor is one of 9 individuals, supported by the Parish Clerk, who are elected to represent the voice of residents within the village. This will involve engaging with local residents to ensure that their views are heard, understood and addressed. As part of the Parish Council you will have responsibility for managing local services and amenities such as the play areas, Greens, amenity land, bus shelters, cemetery and other Parish assets.

As part of the Parish Council you will help to make decisions regarding the finances involved in delivering local services.

You will be involved in working to protect and improve the built and natural environment of Cockfield. This may involve contributing to long term policy development or being part of the team that assesses and comments on local planning applications.

Working where needed on short term local projects.

Liaising and working in partnership with other organisations, agencies or neighbouring parish councils where necessary.

## What skills will I need to be a Parish Councillor?

A Council Committee benefits from diversity and we welcome interest from people of different ages, backgrounds, experiences, abilities both practical and administrative. Good communication skills, problem solving, analytical thinking and being a team player are all advantageous attributes.

## How much time does being a councillor take?

As with anything, what you get out of being a Parish Councillor will depend on what you are able to put in. How much time you are able to commit is largely down to the individual and what level of involvement you are hoping for. As a minimum, you would be expected to attend the monthly Parish Council meetings held one evening per month (Except August and December) In addition you will need to be free to attend the

meetings of any working for example Greens Management, Planning consultation, CIL Projects

### **How long does a Parish Councillor serve for?**

Once elected, Parish Councillors can sit on the Parish Council for a maximum of 4 years. If after that time, you wish to stay in post then you will need to stand for re-election.

If you are interested?

The best way to discover if being a Cockfield Parish Councillor is right for you, is to come along to one of our meetings, meet the team and see us in action. Alternatively in the first instance feel free to contact the Parish Clerk and have an initial discussion.

Steve Ball may be contacted by email at

**parish.council@cockfield.org.uk or 01284 828987**

## **COCKFIELD EMERGENCY PLAN**

### **Update and appeal for volunteers**

The Parish Council has recently been updating the Cockfield Emergency Plan in liaison with the Suffolk County Council Emergency Planning Officer. Like many towns and villages in Suffolk we have an Emergency Plan to help the community respond as effectively as possible to certain risk events, (particularly those where there is an actual or threatened injury or loss of life, or damage to property), in ways that complement and support the emergency services

Generally emergencies are managed and controlled by the Police and/or Fire Service or the Local Authorities, but there may be rare occasions when these services are not able to provide an immediate response, such as a national or county-wide extreme weather event, eg the October 1987 'hurricane'. On these occasions and at other times when risk events are very local, 'self help' action might be required and it is therefore important that the village is prepared by having an effective and up-to date Emergency Plan.

**Risk events included in the plan are: extreme weather (snowfall, gales, heatwave), flooding, prolonged loss of electricity supply, field fires, a major traffic incident and another pandemic.** For each type of event, mitigation and response actions are included to manage the impacts that might be experienced, particularly by vulnerable, elderly and geographically isolated residents.

Planning for and responding to Emergencies in Cockfield is the responsibility of the **COMMUNITY EMERGENCY PLANNING GROUP** which comprises:

The **EMERGENCY CO-ORDINATION GROUP** - which is responsible for activating the Plan and coordinating response activities. Its members are Parish Councillors and representatives of other community organisations.

**COMMUNITY CO-ORDINATORS** - who undertake and co-ordinate response activities in one of 6 allocated areas within our widespread village. In particular they will identify and support any vulnerable residents who may need assistance. **We are currently seeking a Community Co-ordinator for Windsor Green and the surrounding area.**

**REST CENTRE CO-ORDINATORS** - who will manage the operation of a Rest Centre (the Village Hall) in the event of residents and any other people needing temporary shelter.

In addition **VOLUNTEERS** will play an essential part in responding to emergency events by undertaking specific tasks at the request of the Emergency Co-ordination Group.

The Emergency Co-ordination Group would be very pleased and grateful to hear from any residents and members of the farming community who have the relevant skills, equipment and vehicles, and would be prepared to be included in the Emergency Plan register of volunteers. Help could be needed in the following ways:

Clearance of roads blocked by snow, fallen trees or abandoned vehicles (note: chainsaw users must be certificated). Recovering residents and drivers who are directly affected by flooding or are snowbound, or transporting carers or food / medical supplies to vulnerable or isolated residents. (note: 4x4 vehicles should have sufficient power and road clearance for such situations).

Administer First Aid (note: up-to date training / qualifications is required).

Assist the Rest Centre Co-ordinators with catering and supporting residents and other people needing temporary shelter.

Support the Community Co-ordinators in their local areas.

If you would like to volunteer your services to help in any of the ways outlined above or would like to be the Community Co-ordinator in the Windsor Green Area, in the first instance please contact Mark Webster ([emergency.plan@cockfield.org.uk](mailto:emergency.plan@cockfield.org.uk)).

Details of the members of the Emergency Co-ordination Group and the Community Co-ordinators will be included in a further Green Links update and on the village Website as soon as possible.

In the event that the Cockfield Emergency Plan is activated, communications advising residents of the actions being taken will be issued via the Cockfield Community Broadcast e-mail (residents can subscribe for this service at [cockfield.org.uk](http://cockfield.org.uk)) and the Community Co-ordinators. Information may also be broadcast on BBC Radio Suffolk.

It is important to remember that the Emergency Plan exists to support, not replace, the work of the Emergency Services /Local Authorities.

**In the event of any local emergency, if there is ANY threat to life, dial 999 and alert the emergency services (Police, Fire, or Ambulance) immediately. If there is no perceived threat to life, but you have information that may help the emergency services, dial 101.**

Thank you for reading this update. Mark Webster  
Cockfield Parish Council Emergency Officer



# HANDS UP NAIL STUDIO

Certified Nail Master with Diploma.

Only professional equipment. All the **tools are cleaned, disinfected, and surgically sterilised** after every customer ensuring no cross infection.

Manicure + gel polish **£22** Pedicure + gel polish **£25** Manicure + pedicure **£40**

Manicure includes filing, tag nails tidy, cuticle and dead skin removal.  
Pedicure includes soak off bath, complete sole work, toenail work and cuticle removal.

Top Road, Rattlesden, Bury St Edmunds IP30 0SJ  
Tel 07889 448186 / handsupmanicure@gmail.com

Bookings by appointment only



## Betty & Bramble's

Professional Dog Grooming & K9 Care



*Making Your Dogs Our Business*

For more information, please contact

Lisa on New 

**07535 076726**

Bury Road, Cockfield, Bury St. Edmunds,  
Suffolk, IP30 0LB

 [www.bettyandbrambles.co.uk](http://www.bettyandbrambles.co.uk)

 @BettyAndBrambles



# ZUMBA®

*Come & join  
us, relaxed  
atmosphere,  
great music,  
fun routines,  
guaranteed to  
leave with a  
smile!*

*Lose yourself  
in the  
MUSIC  
Find yourself  
in  
SHAPE*

Licensed Zumba Instructor

Julie Goodsman

Tele: 07815497952

Email:

[jgoodsman@btinternet.com](mailto:jgoodsman@btinternet.com)

Classes held every

Wednesday

7-8pm

Cockfield Village Hall

Church Lane, Cockfield

Bury St Edmunds

IP30 0HA

£4.00

Ages 16 & over!





**Cockfield CEVCP School**  
Cockfield  
Bury St Edmunds  
Suffolk IP30 0LA

Tel & Fax 01284 828287  
E-mail: [admin@cockfield.suffolk.sch.uk](mailto:admin@cockfield.suffolk.sch.uk)  
[www.cockfieldprimarieschool.co.uk](http://www.cockfieldprimarieschool.co.uk)

Head Teacher: Mrs Trudie Harkin

Key dates:-

**New Autumn Term 2021**

1<sup>st</sup> & 2<sup>nd</sup> Sept – PD Days

Children return 3<sup>rd</sup> September 2021

PD Day 22<sup>nd</sup> October 2021

Half term 25<sup>th</sup> October

Last day – 17<sup>th</sup> December



# LAMB



Our small flock of sheep has been very prolific this year, so we will have a limited supply of lamb available for sale within the next few weeks. These lambs were born here in Cockfield and have been reared as nature intended, with high welfare standards. We can supply whole or half lambs, or single joints.

The meat will be vacuum packed and labelled, ready for you to put straight into your freezer and enjoy at your leisure.

From half a lamb you can expect: 1 whole leg joint, 1 whole shoulder joint, 1 rack of lamb (or 6/7 cutlets), 6 loin chops, 2 chump chops, a piece of neck fillet and about 0.5kg mince

Price will be dependent on weight, but as a guide expect half a lamb to be in the range £70-£90, whole lamb £150-£180. We hope for the whole carcass to be around 18-20kg, but the finished weight of the meat will be a less than this.

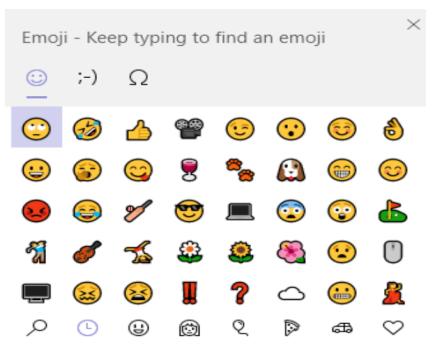
Please contact Bill [billnick75@btinternet.com](mailto:billnick75@btinternet.com) for further details

# Computer Corner

## Special Characters and Symbols in Windows

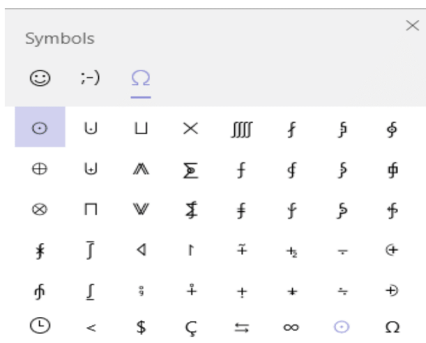
There are a number of ways to insert a special character or symbol into your email or document, depending on such things as the type of keyboard you have, what program you are using and whether you can remember a numeric code equivalent for the symbol. Perhaps the easiest way which gives access to many symbols, is to use the same method as you do to access emojis from a Windows keyboard.

Hold down the Windows key – the symbol of 4 blocks to the left of the spacebar – then key full stop to reveal the emoji screen:



The general format of this panel is that the main selection is made from the top row of 3 symbols, the default being to open at the emoji screen. This main selection then offers multiple scrollable screens, each accessed from the icons along the bottom row.

To access the symbols screen, select the 3<sup>rd</sup> main selection icon at the top, the Omega symbol: Ω



This symbol panel is scrollable, and other sets of symbols are accessible by clicking any of the icons along the bottom row of the panel.

To transfer a symbol to your email or document, click the chosen symbol (or emoji). This copies the symbol to the clipboard. Then at the required location in your email or document, click Ctrl V (hold down Ctrl key and click V) to paste the symbol.

**Neil Ashton**

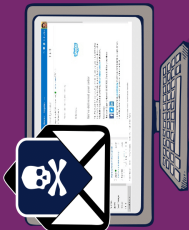
[computer.circle@cockfield.org.uk](mailto:computer.circle@cockfield.org.uk)

# Phishing attacks Dealing with suspicious emails

Phishing emails try to convince users to click on links to dodgy websites or attachments, or to give sensitive information away (such as bank details). This advice includes tips about how to spot the most obvious signs of phishing, and what to do if you think you've clicked a bad link. For more information, please visit [www.ncsc.gov.uk/phishing](http://www.ncsc.gov.uk/phishing).

## What is phishing?

**Phishing** is when criminals attempt to trick people into doing 'the wrong thing', such as clicking a link to a dodgy website. Phishing can be conducted via a text message, social media, or by phone, but the term 'phishing' is mainly used to describe attacks that arrive by email. Criminals send phishing emails to **millions of people**, asking for sensitive information (like bank details), or containing links to bad websites. Some phishing emails may contain viruses disguised as harmless attachments, which are activated when opened.



## Make yourself a harder target

Information from your website or social media accounts leaves a 'digital footprint' that can be exploited by criminals. You can make yourself less likely to be phished by doing the following:

Criminals use publicly available information about you to make their phishing emails appear convincing. **Review your privacy settings**, and think about what you post.

Be aware what your friends, family and colleagues say about you online, as this can also reveal information that can be used to target you.

If you have received an email which you're not quite sure about, **forward it to the NCSC's suspicious Email Reporting Service (SERS): [report@phishing.gov.uk](mailto:report@phishing.gov.uk)**



## What to do if you've already clicked?

The most important thing to do is not to panic. There are number of practical steps you can take:



Open your antivirus (AV) software, and run a full scan. Follow any instructions given.



If you've been tricked into providing your password, you should change your passwords on all your other accounts.



If you have lost money, you need to report it as a crime to Action Fraud. You can do this by visiting [www.actionfraud.police.uk](http://www.actionfraud.police.uk).

## Tell tale signs of phishing

Spotting a phishing email is becoming increasingly difficult, and even the most careful user can be tricked. Here are some tell tale signs that could indicate a phishing attempt.



Is the email addressed to you by name, or does it refer to 'valued customer', or 'friend' or 'colleague'? This can be a sign that the sender does not actually know you, and that it is part of a phishing scam.



Others will try and create official-looking emails by including logos and graphics. Is the design (and quality) what you'd expect?



Does the email contain a veiled threat that asks you to act urgently? Be suspicious of words like 'send these details within 24 hours' or 'you have been a victim of crime, click here immediately'.



Look at the sender's name and email address. Does it sound legitimate, or is it trying to mimic someone you know?



Your bank (or any other official source) should never ask you to supply personal information in an email. **If you need to check, call them directly.**



**If it sounds too good to be true, it probably is. It's most unlikely that someone will offer you designer trainers for £10, or codes to access films for free.**

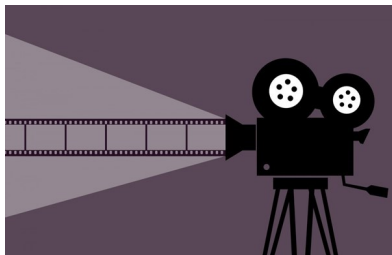
## Community Council 2021 Programme

Please mark these Community Council Programme events in your diaries. In each case you will find further information in this and future issues of Green Links, on the village website, and via community broadcasts.

If you haven't yet done so, please subscribe to receive community broadcasts by visiting the village website [www.cockfield.org.uk](http://www.cockfield.org.uk) and following the link in the footer of any page.

At the time of writing the government are sticking to the planned date of Monday 19th July to ease most restrictions. In planning our own activities the Community Council will continue to follow the rules and guidelines in force at any time and adapt to any changes that may be re-introduced. If any participants in our events choose to take a more cautious approach, e.g. by continuing to wear a face covering even if not required by the regulations, that is of course quite understandable and perfectly acceptable.

### Cockfield Cinema – Friday September 24th



Cockfield Cinema is back in action, showing a film on the 4<sup>th</sup> Friday of each month in the village hall. Details of the next screening are shown elsewhere in Green Links and on the website. We are hopeful that this screening will allow us to run at full capacity and without the need to reserve places in advance. If the situation changes, we will issue a broadcast and update the website.



## Cockfield SpeedQuiz

**Please note change of date: Saturday November 13<sup>th</sup>**

# Speed Quizzing

This will be similar to the monthly virtual SpeedQuizzes that have been taking place during lockdown, but with added features and with all the teams competing in the village hall.

## Community Christmas Event – Sunday December 5<sup>th</sup>



We don't know yet what this event will look like, we just know we want to do something! For now, put the date in your diary.

We always welcome your suggestions for community activities. Please send these suggestions, plus any comments or feedback, to [community.council@cockfield.org.uk](mailto:community.council@cockfield.org.uk).

## Fundraising

Most of our activities require expenditure of some kind. To support this and to give us head-room to plan future events, we raise funds through tickets sales, refreshments, raffles and so on. As a registered charity we also welcome donations of any amount. Recently the Post Office have introduced a scheme where they will match charitable donations up to the value of £200. Should you wish to make a donation, please contact Barbara at the Post Office for details.



# Cockfield Community Council

## The Cockfield Produce, Flower and Craft Show 2021



Sunday 12th September 2021 in Cockfield Village Hall

Following the success of the photographic entry classes for last years show we are incorporating some photographic entry classes this year. The classes are clearly marked and instructions how to enter are on the last page of the schedule.

## SCHEDULE & ENTRY FORM

### Category Craft Classes

1. A hand knitted or crocheted item
2. A hand sewn item
3. A machine sewn item
4. A handcrafted item that does not fall under the category of the above three classes

For all Craft Classes the items are to be displayed flat on the table

### Category Garden Flowers Classes

5. Three blooms of one colour - in water in a vase with an appropriate choice of two types of foliage
6. Single flower - Dahlia - in water in a vase
7. A vase of mixed garden flowers - in water

For all Flower Classes the vase must be no more than 8" high

### Category Garden - Photographs Classes

8. A Bush or Shrub in flower - submit 1 photo only
9. Garden View 1 - a photograph of your garden - submit 1 photo only
10. Garden View 2 - a special area of your garden - please name the area ie quiet corner - submit 1 photo only



... Continued

11. Your Pond - submit 1 photograph only
12. Your Vegetable Plot - submit 1 photograph only



### **Category Garden 2 - Photographs Classes**

13. A Bird in your Garden - domestic - submit 1 photo only
14. Birds at your bird feeder - submit 1 photo only
15. A Wild Mammal visiting your Garden - submit 1 photo only
16. A Butterfly visiting your Garden - submit 1 photo only
17. Your gardens Wildlife Corner - submit 1 photo only
18. A Wild Flower growing in the village - submit 1 photograph only



### **Category Preserves Classes**

19. A Jar of soft fruit Jam
20. A Jar of Chutney
21. A Jar of Marmalade
22. A Jar of Curd

For all Preserves Classes the items are to be displayed on the table

### **Category Fruit Classes**

23. Three Eating Apples any variety
24. Three Cooking Apples any variety
25. Six Plums any variety
26. Three Pears any variety
27. Ten Blackberries - wild or cultivated

Classes 23-27 to be displayed on a plate which will be provided

### **Category Vegetables 1 Classes**

28. Three Carrots any variety - washed with tops cut off to 1"-2"
29. Three Leeks any variety - washed with roots on
30. Three Beetroot any variety - washed with leaves on
31. Three Onions grown from sets any variety - leaves on or off
32. Three Potatoes white any variety - washed
33. Three Potatoes other than white any variety - washed

Classes 28-33 to be displayed on a plate which will be provided



## **Category Vegetables 2**

### **Classes**

- 34. Four Tomatoes any variety - with calyx attached
  - 35. A Vine of Tomatoes, any variety
  - 36. Six Runner Beans any variety - with small bit of stalk attached
  - 37. Gardeners Choice, a basket containing potatoes and three other vegetables sufficient to feed two people for one meal only
- Classes 34-37 to be displayed on a plate which will be provided
- Class 37 the entrant is to provide the basket

## **Category Vegetables 3**

### **Classes**

- 38. Heaviest Onion any variety - washed with leaves on or off
- 39. Longest Runner Bean any variety - with small portion of stalk attached
- 40. Marrow with the widest girth any variety
- 41. Novelty Vegetable - judged on its comic effect only
- 42. Three of one kind of vegetable not mentioned above
- 43. Bunch of mixed Culinary Herbs

Class 38- a display ring will be provided

Classes 39 & 40 to be displayed on the table

Class 41 & 42 to be displayed on a plate which will be provided

Class 43 to be tied and displayed on the table

## **Category Cookery**

### **Classes**

- 44. Victoria Sponge Cake - 3 egg mix, cooked in 7" tins, sandwiched with raspberry jam and butter cream finished sprinkled with sugar
  - 45. Three Cheese scones - unbuttered
  - 46. Three Flapjack bars
  - 47. **MEN ONLY** - 2 Vanilla Cup Cakes decorated to your choice
- Classes 44-47 to be displayed on a plate which will be provided

## **Category Alcoholic Beverages**

### **Classes**

- 48. A Bottle of Wine - made by the entrant
  - 49. A Bottle of Liqueur or Infusion - made by the entrant
- Classes 48 & 49 to be displayed on the table with the bottle clearly labelled with the name of the drink and the date it was bottled

### **Category Under 7's - Classes - Free Entry**

- 50. A photograph of anything - taken by the entrant - submit 1 photo only
- 51. An Art Project item constructed from recycled materials

### **Category 7-16 years - Classes - Free Entry**

- 52. A photograph of anything - taken by the entrant - submit 1 photo only
- 53. An Art Project item of any description - could be a painting, collage, woodwork, pottery etc.

Rules: Entrance Fee - £1.00 per entrant per category, this entitles you to enter as many classes within that category as you wish but only one entry per person per class, is allowed. Entry into additional categories is £1.00 per category.

Entrance to the Under 7's and 7's to 16's categories is free.

All classes are open to male and female entrants except for class 47 which is for men only to enter

All entries must be made/grown/taken by the entrant

Classes are open to residents and non-residents of Cockfield.

The closing date for pre booked entries is Sunday 5th September , although entries will be accepted on the morning of the Show a pre-booked entrant will get through the hand-in process quicker.

Rosettes will be awarded to the entries judged First, Second and Third in each class.

All plates for display purposes will be provided and are the only ones to be used.

Handing in of entries is from 8am - 9.30am on Sunday 12th September at Cockfield Village Hall

Collection of items on the day is from 3.00pm, items not collected by 3.15pm will be sold by public auction, the proceeds of which will go to Cockfield Community Council.

Photographic entries (other than the children's classes) must be submitted by email to [cockfield.show@cockfield.org.uk](mailto:cockfield.show@cockfield.org.uk) (all entries will be acknowledged) no later than Tuesday 31st July to allow for judging, the top 3 photographs in each class will be printed and displayed in the hall.

The Community Council reserves the right to alter/add/remove any classes at any time.

The Judges decision is final in all cases.

Any questions to [cockfield.show@cockfield.org.uk](mailto:cockfield.show@cockfield.org.uk)

Name

I wish to enter in the following Categories - please tick class

|                 |    |  |    |  |    |  |    |  |    |  |    |  |
|-----------------|----|--|----|--|----|--|----|--|----|--|----|--|
| Craft           | 1  |  | 2  |  | 3  |  | 4  |  |    |  |    |  |
| Flowers         | 5  |  | 6  |  | 7  |  |    |  |    |  |    |  |
| Garden 1 Photos | 8  |  | 9  |  | 10 |  | 11 |  | 12 |  |    |  |
| Garden 2 Photos | 13 |  | 14 |  | 15 |  | 16 |  | 17 |  | 18 |  |
| Preserves       | 19 |  | 20 |  | 21 |  | 22 |  |    |  |    |  |
| Fruit           | 23 |  | 24 |  | 25 |  | 26 |  | 27 |  |    |  |
| Vegetables 1    | 28 |  | 29 |  | 30 |  | 31 |  | 32 |  | 33 |  |
| Vegetables 2    | 34 |  | 35 |  | 36 |  | 37 |  |    |  |    |  |
| Vegetables 3    | 38 |  | 39 |  | 40 |  | 41 |  | 42 |  | 43 |  |
| Cookery         | 44 |  | 45 |  | 46 |  | 47 |  |    |  |    |  |
| Alcohol         | 48 |  | 49 |  |    |  |    |  |    |  |    |  |
| Under 7's       | 50 |  | 51 |  |    |  |    |  |    |  |    |  |
| 7's to 16's     | 52 |  | 53 |  |    |  |    |  |    |  |    |  |

I enclose payment of £

(for example to enter classes 1, 6, 10, 15, 16, 26, 50 and 53 would be £5.  
Categories - Craft class 1 = £1, Flowers class 6 = £1, Preserves class 19 = £1,  
Fruit Classes 23 & 24= £1, Vegetables 2 class 35 = £1, Under 7's classes 50  
free, 7's to 16's class 53 free. Total £5)

I wish to enter in the classes specified above I have enclosed the  
correct entry fee, I agree to abide by the rules of the competition.

Signed

Contact phone number

Completed entry forms and entrance fee, can be dropped off at the Post  
Office or through the letter box at Newholme, Smithwood Green IP30 0JQ.  
Any queries or questions please phone Janne on 01284 828264

Any cheques to be made payable to Cockfield Community Council



Town & Country Interiors

All aspects of building work undertaken.

Extensions, renovations, kitchens, bathrooms and bedrooms.

Please call 01284 828 592 or 01787 282 353 or visit our website [www.tcisuffolk.co.uk](http://www.tcisuffolk.co.uk)



## NEW FARM SHOP

- Local Produce
- Fruit and Veg
- Delicatessen
- Butchers
- Wines, cordials, soft drinks

Tel: 01284 386015

[www.hennesseylifestyle.co.uk](http://www.hennesseylifestyle.co.uk)

[info@hennesseylifestyle.co.uk](mailto:info@hennesseylifestyle.co.uk)

Overland Business Park, Sudbury Road,  
Bury St Edmunds, IP30 0UL

## BRADNAMS TREE SERVICES

All aspects of tree surgery undertaken  
Hedges expertly managed  
Free Estimates

Stuart Bradnam BSc RRD  
Call 01284 388756

## PERFECT PRESSING

IRONING PILING UP?

HELP NEEDED WITH SPRING CLEANING?

- Reliable Ironing, Laundering & Cleaning Service
- Collected & Delivered Promptly
- One Off, or on a Regular Basis

Please contact Allie on 07732 111802 or email

[info@perfectpressing.co.uk](mailto:info@perfectpressing.co.uk)

[www.perfectpressing.co.uk](http://www.perfectpressing.co.uk)

# Children's Page September

It's Back to School time, and I expect you are excited to see your friends again. For some of you it will be a new school, new shoes, a new uniform and a new pencil case, I really used to like the new pencil case!

How many words can you make from the letters in  
A NEW PENCIL CASE

Sets of colouring pencils usually have 12 colours can you name all 12 and if that's too easy how about listing all the colours in a set of 24.





## Andy's Jet Force

- All drainage work undertaken, from block drains to new drains
- CCTV surveys
- High pressure water jetting services
- Patios and driveways cleaned
- Septic tanks and treatment plants emptied, serviced and installed

**Andrew Waldock**  
jefforce@mail.com

**T 01284 763952 M 07772 751645**  
www.andysjetforce.co.uk

## Victor Keyton

Most makes of lawnmowers serviced,  
sharpened, repaired  
Ride On or Walk Behind  
Collection/Delivery Available Free Estimates

Pruners,  
loppers,  
shears etc.  
sharpened

01284 828264 or 07860 762424  
Smithwood Green Cockfield



## STEPHEN GREEN CARPETS

Quality Carpets & Vinyl's Supplied & Fitted  
All Aspects taken care of Gripper - Glue - Underlay

Free Quotations

PHONE 07970 488851

EMAIL: SGREENCARP@AOL.CO.UK



## S.E.P PAINTERS

For all your Painting & Decorating requirements  
Fully professional service. Prompt, efficient, reliable.

No job too big or too small. Dulux Accredited  
Competitive prices. Free Quotations. City & Guilds qualified.

Phone Andy on: 01787 375824

Mobile: 07748 800701 or 07802 613902

Email: andy@seppainters.co.uk

VISIT OUR WEB SITE ON [www.seppainters.co.uk](http://www.seppainters.co.uk)

## September's Advice Column



**I've been living in my privately rented flat for years. I generally have a good relationship with my landlord, but I just can't get them to carry out various repairs that have built up. How can I get them to act - and what exactly do they have to do?**

This must be a very frustrating situation. The law states that your landlord must provide accommodation that is safe, healthy and free from things that could cause serious harm.

You don't say exactly what repairs are needed. If you have problems such as electrical wiring that you think might be faulty, or there's damp, or an infestation by pests, the landlord has a legal obligation to put things right.

Landlords are also responsible for the maintenance of the general structure, and fittings such as boilers and radiators; basins, baths and toilets; and the drains.

The first step is to contact your landlord again, in writing. Include photographs of the problems. Keep a record of all communications and evidence relating to the disrepair.

If that doesn't prompt any action, the housing advisers at Citizens Advice can help with next steps. These could include contacting your local council (who will have dedicated officers for dealing with disrepair in private rented properties) or asking for a visit by the environmental health team.

Tenants can take their landlords to court to force them to carry out repairs. However, it's worth getting some advice and thinking carefully before embarking on this route.

If you need further information or advice contact Sudbury & District Citizens Advice. We are providing advice by telephone and email, Monday – Thursday, 10am – 1pm. Please phone 01787 321400 and leave a message and someone will call you back when available. We will attempt three times to call you back, so please expect a call from a withheld number. You can also ring our Advice line on Freephone 0808 278 7868 or 0800 144 88 48.

Alternatively, contact us via email at [advice@sudburycab.org.uk](mailto:advice@sudburycab.org.uk) or by using the contact facility on our website [www.sudburycab.org.uk](http://www.sudburycab.org.uk).

Contact: Elaine Gorman  
Email: [elaine.gorman@sudburycab.org.uk](mailto:elaine.gorman@sudburycab.org.uk)  
Sudbury & District Citizens Advice  
Keyse House  
Acton Lane, Sudbury CO10 1QN

Dear Friends,

September is harvest festival time! In St Peter's Church we will be holding a harvest communion service on Sunday 19<sup>th</sup> September at 10am, and then in the afternoon from 3pm there will be an open afternoon in the church where teas and cakes will be served, and you can view the harvest decorations and generally enjoy a chat and a gossip! We are also collecting tins and packets of food for this harvest extravaganza; and afterwards these will be donated to the Bury St Edmunds foodbank. I do hope that you will be able to come along either in the morning or the afternoon to help us to give thanks for all those who are part of producing the food that sustains us!

I always marvel at the harvesting of the crops, and the way in which the fields change throughout the year. We are so lucky to live in such a beautiful area where we can fully appreciate the yearly cycle of growth and harvest. We are also very fortunate that we have such a huge choice in the food that we eat; but we should also remember those both at home and abroad who are hungry.

However, food for Christians is not just limited to the physical. In one of our Gospels we hear Jesus say, 'Man does not live on bread alone, but on every word that comes from the mouth of God.' (Matthew 4:4). We need spiritual food as well as physical food to develop and grow into the person that we are meant to be. Where do we find this spiritual food? Come along to our harvest celebration and you will have a taste of it.

Yours in Christ,

*Sharon*

Rev'd Canon Sharon Potter, Rector of the Cockfield Benefice,  
[Revsharon2@gmail.com](mailto:Revsharon2@gmail.com); 01284 828599 or 07825 086063



## Cockfield Benefice Services & Events – September 2021

**Please see the benefice website for up-to-date information on services**

|  |  |
|--|--|
| Sunday 5 <sup>th</sup> September<br>Trinity 14 – Climate<br>Sunday | 9.30am Morning Prayer - Stanningfield<br>10am Communion - Bradfield St George<br>10am Morning Prayer – Cockfield<br>6pm Evening Celtic Communion – Felsham |
| Sunday 12 <sup>th</sup> September<br>Trinity 15/Harvest            | 8am Communion BCP – Cockfield<br>10am Harvest Service - Gedding<br>10am Communion – Bradfield St Clare<br>6pm Harvest Service – Gt Whelnetham              |
| Sunday 19 <sup>th</sup> September<br>Trinity 16/Harvest            | 10am Harvest Communion – Cockfield<br>3pm – Harvest Tea & Cakes - Cockfield<br>10am Family@Felsham Harvest<br>6pm Harvest Service – Lt Whelnetham          |
| Sunday 26 <sup>th</sup> September<br>Trinity 17                    | 9.30am Communion – Gt Whelnetham<br>10am Communion BCP – Gedding<br>10am Worshipping Together – Bradfield St George  |

A service will be recorded every Sunday morning and posted on the benefice facebook page at:

[https://www.facebook.com/cockfieldbenefice/videos/?ref=page\\_internal](https://www.facebook.com/cockfieldbenefice/videos/?ref=page_internal)

A service of Celtic Morning Prayer is held every Tuesday at Cockfield at 9am

The prayer group meets every Wednesday at 2pm via zoom with the following link:

[https://us02web.zoom.us/j/86736217904?](https://us02web.zoom.us/j/86736217904?pwd=Y2VGK0UvQlpkZHFzTFE4NkE4bHFxQT09)

[pwd=Y2VGK0UvQlpkZHFzTFE4NkE4bHFxQT09](https://us02web.zoom.us/j/86736217904?pwd=Y2VGK0UvQlpkZHFzTFE4NkE4bHFxQT09)

*Please note these services may be subject to change – for up-to-date service times see the benefice website at [www.cockfieldbenefice.com](http://www.cockfieldbenefice.com)*



Complete Gas,  
Oil & LpG  
Installations.

T: 01787 247540

E: info@grdplumbingandheating.co.uk



**Burnerserve** Ltd

Maintenance, Repair  
and Servicing  
for Oil Fired Boilers  
and AGA Cookers.

**Oftec Registered Engineers,  
Local, Reliable, Professional.**

T: 01787 247540

E: info@burnerserve.co.uk

W: www.burnerserve.co.uk



Unit 5 Norman Way, Lavenham, Suffolk CO10 9PY



Your local  
tree surgeon  
based in Bury  
St. Edmunds

**Gorilla Tree Services** is your local tree care company that you can trust for all kinds of arboricultural services. We are passionate about trees, their environment and the work we do with them.

Do you want a beautiful looking estate with healthy trees and plants?  
Contact us today to discuss our services.

M: 07851 459 734 T: 01284 810 027

E: info@gorillatreeservices.co.uk

www.gorillatreeservices.co.uk



- Tree felling
- Tree surgery & stump removal
- Crown raise and reduction
- Crown thinning
- Pollarding & formative pruning
- Hedging & pruning
- Green waste removal
- Chipper hire with operator
- Storm / Wind damages trees
- Phone line clearing



# WINTERS

PAINTING CLEANING AND BUILDING MAINTENANCE

*Specialise in all types of domestic exterior , agricultural and industrial painting*

*We can paint and clean all types of areas*

*Barn conversions - Houses - Garages - Doors - Fascia Boards- Gates - Fences -  
Roofs - Agricultural Barns And Buildings*

**OFFICE - 01284 624356 MOBILE 07384 351356**

## **KARLS COMPUTER SERVICES**

**HAVING PROBLEMS WITH INSTALLING BROADBAND?  
OR NETWORKING OR NEED A NEW COMPUTER/LAPTOP,  
VIRUS PROBLEMS, 1 ON 1 LESSONS OR JUST AN UPGRADE  
GIVE ME A CALL**

**19 Hervey Road, B.S.E, IP33 2DN**

**TEL: 01284 700337 MOB: 07717 842913**

**www.karlscomputerservices.co.uk**

**EMAIL:-karl@karlscomputerservices.co.uk**



|                              |                                   |                 |                  |
|------------------------------|-----------------------------------|-----------------|------------------|
| Kitchen Fitting              | Bathrooms                         | Plumbing        | Minor Electrical |
| Worktops                     | Shower Rooms                      | - New Taps      | - Plug Sockets   |
| Sinks and Taps               | Utility Rooms                     | - Outside Taps  | - Light Switches |
| Tiling                       | Toilets                           | - New Radiators | - Light Fittings |
| Flat Pack Furniture Assembly | Driveway and Patio Jet Washing    |                 |                  |
| Garage/Rubbish Clearance     | Garden - Decking, Sheds and Bases |                 |                  |
| Bespoke Shelving and Storage |                                   |                 |                  |

Getting your house ready for sale, or letting, we can do all those little jobs you have been putting off

**Telephone Paul on 01284 827402**

**Mobile 07505 881034**

DBS Checked ✓ Public Liability Insurance ✓ Clean and Tidy ✓  
Prompt and Efficient ✓ Attention to Detail ✓ Pet Friendly ✓

# KH

# Kevin Hollings KITCHEN STUDIO

Unit 14 Lodge Works,  
Stowmarket Road,  
Old Newton,  
IP14 4EE  
01449 257160  
info@kevinhollingskitchens.co.uk  
www.kevinhollings.com



## TOMLINSON GROUND CARE



JOHN DEERE

**Horticultural & Garden Machinery Suppliers**

**Sales Service Parts Repairs Toys**

Ride on mowers from £1599 Inc vat

Walk behind petrol & battery mowers from £199 Inc vat

Strimmers, hedge cutters, blowers, chainsaws etc.

Garden tools, paddock & turf machinery

Service & repair of all makes

*Set in over 20 acres – Try before you buy*

**Established in Buxhall since 1991 – Call our friendly team for advice**

Brettenham Road, Buxhall, Stowmarket IP14 3DL

01449 736060 [www.tomlinsongroundcare.co.uk](http://www.tomlinsongroundcare.co.uk)



**AL-KO**

**EGO**

**ECHO**

**WEIBANG**

# Lavenham Library

## Opening Hours

Monday – 10-1  
Tuesday - 10-1 and 2-5  
Thursday - 10-1 and 2-5  
Friday - 10-1 and 2-5  
Saturday - 10-2  
Sunday & Wednesday - Closed

We are so happy that our groups have restarted and the Summer Reading Challenge is running this year. Details of all our events and activities are shown below. Hope to see you soon at the library  
**(Our groups & services are subject to any changes in the government Coronavirus restrictions)**

## Summer Reading Challenge – Wild World Heroes



Congratulations to all the children who joined and finished the challenge at Lavenham. We hope you enjoyed the crafts and activities as much as we did.  
Thank you to Friends of Lavenham Library for their support with extra prizes and the cost of the activities we were able to offer.



**If you haven't quite finished your last books, the challenge doesn't finish until Sunday 12 September so you still have time to tell us about them.**

**We are thinking of starting a children's book group which will meet at the library after school on a Thursday evening. Please contact us if your child would like to join**

## Top Time Group

Top Time is our sociable drop -in group for all adults. We hold fortnightly meetings from 2.30-4pm with activities ranging from author talks and Kurling sessions to Book Sculpting, crafts and board games.

**7 September**

**Indoor Kurling**

**14 September**

**Author talk with Rosy Thornton**

**12 October**

**Local author David Laws talking about his latest book**

**26 October**

**Book Sculpting with The Book Surgeon**

**Tot Rock** – our weekly WordPlay session for preschool children and their carers will restart on **Thursday 9 September from 2pm-3pm**. Please contact the library if you would like more details of how our sessions work – action songs and rhymes with time for a chat and cup of tea too.

**Indoor Kurling** – we would like to relaunch this group and will meet on Fridays from 2.30 – 4pm. Come along on 7 September to see how it works. It's certainly fun

## Covid-19 Self -Test Kits (Rapid Antigen Test)

You may pick up the NHS lateral flow test kits from the library. These are suitable for adults and children who need to test regularly for work and school. They can also be used before visiting care homes or vulnerable relatives as well as before hospital appointments.

## Contact Details



Lavenham Library, Lavenham Village Hall, Church St, Lavenham CO10 9QT

Tel No: 01787 247729

[www.suffolklibraries.co.uk](http://www.suffolklibraries.co.uk)

Email: [lavenham.library@suffolklibraries.co.uk](mailto:lavenham.library@suffolklibraries.co.uk)

Suffolk Libraries HMRC charity number XT34476

## FIELD COMPOST LTD

We'll Help Your Garden Grow



Composts  
Manure  
Soil Improvers  
Soil  
Bark  
Woodchip  
Mulch  
Sand and Gravel  
Lawn Care

[www.fieldcompost.co.uk](http://www.fieldcompost.co.uk)

[sales@fieldcompost.co.uk](mailto:sales@fieldcompost.co.uk)  
01440 966966



## JPS Timber

Suppliers of:

- New and Reclaimed Sleepers
- Reclaimed Scaffold Boards
- Carcassing Timber
- Decking
- Post and Rail Fencing
- Oak Barrels and Planters and more....

**07970 559251**

[mail@jpstimber.co.uk](mailto:mail@jpstimber.co.uk)

[www.jpstimber.co.uk](http://www.jpstimber.co.uk)



## Vision Safety

Confused by the maze of Health and Safety legislation affecting your business? Call us now for experienced common sense advice from experienced health and safety consultants.

Who can:

- Assist with your Covid 19 compliance
- Provide pragmatic health and safety advice,
- Deliver expert health & safety training including e-learning,
- Provide competent construction health and safety advice in compliance with CDM2015,
- Conduct thorough health and safety audits,
- Take lead for accident investigation and support,
- Can support your all year round health & safety requirements,
- Provide assistance in obtaining SSIP accreditations,
- Will answer all your health & safety questions, Including help with tenders.
- Provide occupational health services,

Call Tony now on: 01284 828524

Email: [Visionsafety@gmx.com](mailto:Visionsafety@gmx.com)



# THORPE LANDSCAPING & GARDENING SERVICES

Contact Gavin on 07484 511 804

- To include a regular maintenance package for clients.
- Garden design.
- All soft landscaping, including turfing, seeding, planting etc.
- Hard landscaping, including Patios, walls, decking, driveways, fencing, all types of gates.
- Garden maintenance from hedge cutting, grass cutting, pruning, weeding.

# **PS**

## **PAUL SAINSBURY**

### RESTORATION & BUILDING

**With over 20 years  
experience in restoration  
and all aspects of building**

**Free Estimates  
Mobile 07785 582556  
Email: [enq@paul-sainsbury.co.uk](mailto:enq@paul-sainsbury.co.uk)**

## **A N GILLAM**

### Building

All aspects of roofing, chimney work, Lime plastering & rendering.  
Chimney sweep

*Free quotes - No job too small,*

The Mouse House, Bradfield St Clare, IP30 0EL

**Tel 01284 388508 Mob 07961 878564**

# ALL ASPECTS LANDSCAPING

## Fencing Paving Treecare

[WWW.ALLASPECTSLANDSCAPING.CO](http://WWW.ALLASPECTSLANDSCAPING.CO)

CALL NOW FOR A FREE NON OBLIGATION QUOTE

Follow us on Facebook



We cover all hard and soft landscaping with many years of experience

FENCING -DRIVEWAYS - PATHS AND PATIOS-BLOCK PAVING -  
GARDEN GATES AND WALLS -TURFING AND SEEDING-GARDEN  
CLEARANCES-DIGGER WORK -CURB STONES-ALL TREE WORK  
AND HEDGE CUTTING-GRASS CUTTING LARGE/ SMALL AREAS

**01284 624089 07384351944**



**PRESS GANG**  
LAUNDRY | SERVICES

**Your door-to-door laundry service  
& wet cleaning with**

**Lagoon® Advanced Care**

***The green cleaning revolution for  
your clothes***

**Opening Hours: Mon-Fri 8am-5pm**

**Unit 12 Lady Lane Industrial Estate, Crockatt Road,  
Hadleigh IP7 6BQ**

**Tel: 01473 558 448**

**e-mail: [sales@pressganglaundry.com](mailto:sales@pressganglaundry.com)**

**[www.pressganglaundry.com](http://www.pressganglaundry.com)**



**PRESS GANG**  
LAUNDRY | SERVICES





**All types of electrical work covered from changing a light fitting to a complete re-wire.**

- New circuits • Fuse board upgrades • House re-wires
- Lighting design • New Kitchen wiring • Changing light fittings
- Garden lighting • Alarm systems • Smoke alarms
- Heating controls • Commercial electrics • PAT testing
- Electrical condition testing and reporting • Certification • Fault finding
- Emergency call outs • Free advice, quotations and estimates

**Call Steve on 07961 576677 or 01284 828484**  
steveroberts101@outlook.com



**OPEN!**

**The Horseshoes Inn**

Traditional family owned & run Freehouse  
Bury Road, Cockfield, Nr Lavenham IP30 OJB

Homemade hot & cold food

Sunday roast from £9.95

Children's menu £5.50

Open Tuesday evening to Sunday

Lunch & dinner

OPEN

**Support your local Inn**

**CALL 01284 828177**

*West Suffolk CAMRA Award winning cask ales & ciders. Trip Advisor Certificate of Excellence Award*



# Sudbury & District Citizens Advice



Coronavirus has made life hard for many people. **Citizens Advice** is here to help.

**We give free, up-to-date advice to everyone, whoever you are, whatever the problem.**

If you need help with benefits, work, debt, housing or anything else please get in touch.

## Call us

Sudbury: 01787 321400, Mon – Thurs 10am – 1pm

Suffolk: Freephone 0808 278 7868

England: Freephone 0800 144 88 48

## Textphone

England: 18001 0800 144 8884

Email [advice@sudburycab.org.uk](mailto:advice@sudburycab.org.uk)

Visit our [website](http://sudburycab.org.uk) [sudburycab.org.uk](http://sudburycab.org.uk)

**citizens  
advice**

# Out of fuel? Emergency oil delivery required? Tank leaking?

## CARGATE engineering

Priority Barns, Drinkstone Road, Gedding, Bury St Edmunds, IP30 0QE

### We help customers stay warm around the clock!

Cargate Engineering is a family-run Oftec-registered business specialising in supplying emergency fuel to homes and businesses in remote areas.

Since being established in 1996, Cargate Engineering has also developed experience and skills that allow us to offer a varied and comprehensive list of services, including everything from routine pump station maintenance to regularly scheduled septic tank cleaning and emergency call outs for issues such as overflowing septic tanks and drainage blockages. In addition, we produce high quality CAD drawings, are experts in root ingress removal, and are licensed hazardous waste carriers, ensuring we can meet all your needs. We take pride in our ability to offer a bespoke and friendly service with effective results that will last.

- Emergency Small Load Fuel Delivery and Boiler Relight Service
- Emergency Oil Tank Pump Down and Loan Tank Service
- Tank Replacement Installation Service by Experienced Oftec Engineers
- Contaminated Fuel Uplift Service Meeting Full ADR regulations
- Tank Internals and Bund Sludge Cleaning Service
- Oil Spill - Loss - Validation and Remediation Works
- Decommission of Redundant Fuel Tanks and Fuel Buy Back Scheme



Excellent services at competitive prices...



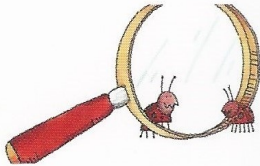
Bury St Edmunds:  
01284 386 538

24/7 Emergency:  
07974 495 362

Email:  
info@cargateweb.co.uk

Website:  
www.cargate-engineering.co.uk

## ANGLIA PEST CONTROL



### PEST CONTROL SERVICES since 1986

Call Will: 07919 356 155

Email:  
iarwainbenadar77@gmail.com

## Bridge Farm

Sudbury Road, Lavenham, CO10 9PJ

Tel: 01787 247522

From Race Horses to Rabbits...

.....we can help you take care of all your animal and poultry needs with our very competitive prices on feeds, supplements and varied types of bedding inc. Hay , Straw & Woodchips

**Why not come and visit our Wild Bird Centre?  
There is so much to see!**

Also we sell Bottled Gas, Coal & Wood.  
Dishwasher Salt, Mushroom Compost & Peat.

We can deliver locally  
Open Monday - Saturday  
9.00am - 5.00pm  
Sunday  
9.00am - 1.00pm



## Congregational Church Corner

In a speech delivered at Harvard University on 6<sup>th</sup> September 1943, Winston Churchill warned of divisions arising between Britain and America when he said: "If we stand together nothing is impossible but if we are divided all will fail". He was reiterating the old and well-known saying of "united we stand but divided we fall" which had an important significance at that time.

The apostle Paul also recognised the dangers of divisions developing in the early church at Corinth where we see from 1 Corinthians 1 that he warns them: "there should be no divisions among you" (verse 10). He delivered this warning as some of the members of the Corinthian church were in danger of creating personality cults by expressing themselves to be followers of Paul, Apollos and Peter, (verse: 12). But Paul made it clear that "Christ is not divided" (verse 13) and that they should be united one with another under Christ having the same mind and thought (verse 10); emphasising that God's message is more important than the human messenger bringing it (verse 23).

Paul's teaching to the Corinthian church is as much needed today as it was back then and, perhaps even more so as we see 'the day' approaching, when, we are warned, that there will be those in the church of today having "itchy ears" (2 Timothy 4:3) and so be in danger of departing from the truth found in Christ alone; enticed away by a worldly and corrupt message that usurps the rightful place of Christ at the centre of worship which promises much in the way of material gain but delivers little in the way of spiritual enrichment.

And so we are encouraged to: "test what "they" say to see if the preaching we hear comes from God or man. For, as we are warned: "There are many false prophets in the world" (1 John 4:1). And these are those who would lead us away from sound teaching and, if we are not careful, into the error of non-biblical based doctrines devised by men (and women), very often, for the purpose of their own personal gain. Instead Paul exhorted the members of the Corinthian church, and down through the ages to us today, that they and we should "glory in the Lord" (verse 31) who is the firm and only foundation in whom we should place our trust to the exclusion of all others. That was good advice to the Corinthian church and it is good advice to us all today.

Bill Attwood

Enquiries Pastor Gordon Hold  
01284 762663  
ghold@gmail.com





## Bury & District Pest Control

### PEST CONTROL SPECIALISTS

Domestic, Farm and Commercial premises

*No job too small - Contracts welcome*

Effective control solutions for:

- Insects
- Wasps
- Ants
- Rodents
- Moles
- Hornets
- Rabbits
- Squirrels
- Flies
- Birds etc...

25yrs Experience of infestation control



For a total Professional friendly local service

Call: 01284 220096

or

01359 232745

info@burystedmundspestcontrol.co.uk  
www.burystedmundspestcontrol.co.uk

# MOT

IN

COCKFIELD



**+ MOTOR VEHICLE  
SERVICE + REPAIRS**

# W.A WATTS

SINCE 2017

# A U T O M O T I V E

M: 07825 744 974

T: 01284 828 325

wawattsautomotive@gmail.com

Unit 1, Peppers Hall, Old Hall Lane, Cross  
Green, Cockfield, IP30 0LQ

## Nicholson Executive Travel

Professional Chauffeur Service

Airports and Seaports

Business Travel

Any UK Destination

Accounts Welcomed

Tel: 01359 232648

07850 370465

roger.nicholson1964@gmail.com

The CleanPlumber   
experience the difference

Installations, Service & Repairs  
Domestic & Commercial...

- Gas, Oil and LPG Boilers
- Central Heating
- Power Flushing of Radiators
- Gas Safe and Oftec registered
- Showers & Bathrooms
- Property Maintenance

**A leaking tap to a brand new  
system – we can help you**

Call us now on

# 01284 765453

www.thecleanplumber.co.uk

# Announcements

Do you have an announcement you would like included here?  
There is no charge for any announcements  
Please contact the Editor Janne Cutting-Keyton on  
01284 828264 or [janne@twerbs.co.uk](mailto:janne@twerbs.co.uk)

**Special cakes for  
special celebrations**

*Jean Banker*

[www.amazingcakesbyjean.co.uk](http://www.amazingcakesbyjean.co.uk)



**01359 241135**



Green Matters caters for domestic and commercial clients offering:

- Grass Cutting
- Turf Laying
- Pruning
- Planting
- Garden Clearance
- Hedge Cutting
- Restoring and Maintaining
- Advice on all garden aspects
- Fully Insured
- Environment Agency Registered



☎ 01284 728044    📞 07941 640560  
✉ [greenmattersgardenservices@gmail.com](mailto:greenmattersgardenservices@gmail.com)

## Tania Jones Accountancy

friendly, professional, qualified  
accountancy services

• Bookkeeping • Accounts • Tax Returns

t: 01359 241105    m: 07702 830001  
e: [tania@taniajones.co.uk](mailto:tania@taniajones.co.uk)

# Wavelength Aerials

**Aerials • Satellite & TV Systems**

Neat & Discreet Installation + Maintenance + Repair

For a free quote contact us on 01449 678 653 / 07828 085 294



Supply and wall-mounting  
of Plasma & LCD TVs

[info@wavelengthaerials.co.uk](mailto:info@wavelengthaerials.co.uk)  
[www.wavelengthaerials.co.uk](http://www.wavelengthaerials.co.uk)



## DAVID FOURACRE

Your Local Painters & Decorators

Interior & Exterior

All Aspects of Work Undertaken from Surface Preparation/Repair  
to Final High Quality Finish

For Advice & Free Quotation please call

**01449 736283 Mobile: 07810 482311**

or e-mail: [yoursafehands@gmail.com](mailto:yoursafehands@gmail.com)

## Professional Chimney Sweeping

### Chimney Matters

Town and Country

**Mobile : 07767 864127**

**Phone: 01284 789663**

[www.chimneymatters.co.uk](http://www.chimneymatters.co.uk)



- Open fires, Wood burners swept and serviced for maximum efficiency.
- Certificates issued.
- Cows and Bird guards fitted.
- Fully insured.



### *Walnut Tree Designs*

BESPOKE CURTAINS & BLINDS

*Free design consultation in your own home- Complete made-to-measure service for all your soft furnishings requirements*

*CUSHIONS - FABRICS - TRIMS-  
POLES - UPHOLSTERY - PELMETS  
- HEADBOARDS - VALENCES - VE-  
NETIAN & ROLLER BLINDS*

*Call Viki, Angela or Terri Oxley to  
arrange a free consultation*

*Tel: 01284 828263*

*M: 078269 30011*

*e-mail: [walnuttreedesigns@gmail.com](mailto:walnuttreedesigns@gmail.com)*



VANITY FUR  
DOG GROOMING

## LUXURY DOG GROOMING

From a full groom to a simple wash & dry

**ALL DOGS ARE PAMPERED AT  
VANITY FUR!**

For more information contact **Charlotte**

**01284 827089**

[www.vanity-fur-doggrooming.co.uk](http://www.vanity-fur-doggrooming.co.uk)

Two A's, Hoggards Green, Stanningfield,  
Bury St Edmunds, IP29 4RG



## PAUL THE PLASTERER

All aspects of plastering work undertaken  
No job too small



Fully qualified, Clean, Honest and reliable  
Tradesman

15 Years experience

Call Paul – 01284 830887/ 07958 229559


Lawshall Village, Bury St Edmunds IP29 4PW



Free  
estimates

== *W. A. Deacon* ==

Funeral Services



*An Independent Family Company,  
dedicated to your service.  
Established over fifty years.*

Golden Charter pre-paid arrangements available.  
Private Chapel of Rest

Norman Way, High Street, Lavenham,  
Suffolk, CO10 9PY.

*24-Hour Telephone Service*

01787 248282 & 248147

## SEPTIC TANK EMPTYING AND DRAIN CLEANING

Tank emptying from £80

## A K SERVICES

Ramsey Road Hadleigh

01473 822694  
07891341645  
Available 24/7

No callout charge for  
emergencies

## WINDOWS CLEANED AND GARDENS TIDIED

**Call Craig for a free quote and introductory discount**

**01284 827110 / 07816 932878**

**[brightgreen22@gmail.com](mailto:brightgreen22@gmail.com)**

**[www.brightandgreen.co.uk](http://www.brightandgreen.co.uk)**

*All work fully insured*

# BRIGHTGREEN

# NUNNAWAYS JETTING SERVICE



Soakaway Services  
Drains Unblocked  
Septic Tank Servicing  
Driveways/Patios cleaned  
Installation services available

**24/7**

**CALL TODAY on 01359 232716 or  
Mobile 07941 523498**

**Rothwell's**  
Carpet Cleaning

## Carpet Cleaning &

**Stone Floor, Upholstery, Rugs**

*A few points that make us stand out,*

Rothwell's has been in business since 1993

We're an honest local family firm.

Our large truck mounted machines mean  
more cleaning & drying power  
for the best results possible.

Members of both the NCCA and TACCA.

We will move the furniture.

100% satisfaction or it's FREE.

Call Oliver and Max Campbell  
for expert help today.

**01638 428 060**

**www.Rothwells.biz**

**The CleanPlumber**   
experience the difference

**Installations, Service & Repairs  
Domestic & Commercial...**

- Gas, Oil and LPG Boilers
- Central Heating
- Power Flushing of Radiators
- Gas Safe and Oftec registered
- Showers & Bathrooms
- Property Maintenance

**A leaking tap to a brand new  
system – we can help you**

**Call us now on**

**01284 765453**

[www.thecleanplumber.co.uk](http://www.thecleanplumber.co.uk)

## CJ Computer Services

Repairs - Upgrades - Custom Build Computers

Reasonable Charges - On Site Service - Fully Insured

Fully Qualified Technician - One 2 One Tuition - Lap-Top Sales

Wireless Broadband Set-up and Secured

Chris 01359 271772 or 07717 604180 [chris@cjcomputerservices.biz](mailto:chris@cjcomputerservices.biz)

# Ventanilla Blinds

Rollers Verticals Romans Pleated  
Wooden & Metal Venetians Sheer Rollers  
Conservatory blinds Blackout blinds  
Perfect fit Pleated, Roller & Venetian  
Awnings, Garden sails & Roller curtains

01787 313677 or 07966 371963

## CHIMNEY SWEEP

### ECO SWEEP CHIMNEY SERVICES

- NEW POWER SWEEPING METHOD USED FOR A MORE THOROUGH CHIMNEY CLEAN THAN BRUSHES.
- INDUSTRIAL HEPA FILTERED VACUUM.
- FULLY INSURED.
- INSURANCE RECOGNIZED CERTIFICATES ISSUED.
- SPOTLESS, RELIABLE AND FRIENDLY SERVICE.
- ALL CHIMNEYS, WOODBURNERS, AGA, BOILER FLUES SWEPT.
- GUILD OF MASTER SWEEPS CERTIFICATED MEMBER.



TEL. 01359 232335

## TIME FOR YOU™

DOMESTIC CLEANING

### Are you tired of cleaning?



We have the  
right cleaner  
waiting  
to help  
you.

**Regular - Weekly - Cleaner**

01359 258991

Typically £13 per hour

[www.timeforyousuffolk.co.uk](http://www.timeforyousuffolk.co.uk)



# R W SERVICES

## PROPERTY & GARDEN MAINTENANCE

All aspects of property maintenance covered.  
Garden Design & Construction, Painting & Decorating  
Roofing, Carpentry, Groundwork etc.

Free quotations    Fully Insured    References available

Rod Williams 01284 828965  
Mobile 0775 2626261

Local tradesmen with integrity



## Oil-fired boiler engineer

**Mark Smith (OFTEC Registered)**

Fully trained in both domestic and light commercial boilers.

All repairs, servicing and commissioning undertaken by  
a friendly and efficient Cockfield based engineer.



**Registered  
Business**

Competitive prices

Tel: 01284 827446



**Registered  
Technician**



# **TARLING FENCING**

**FENCING AND GROUNDCARE SPECIALISTS**

Equestrian  
Agricultural  
Domestic  
Gate installation  
Landscaping  
Groundcare

**Contact John for a free quotation:  
01359 242496 or 07590 580512  
tarlingfencing@outlook.com**



**We specialise in Precision and Civil Engineering  
With over 30 years experience.**

We cover a wide range of manufacturing needs.  
Including CNC Milling and Turning,  
Structural Steels (CE Accredited),  
Welding Fabrication and Installation.

For more about us please visit our website  
[www.grahamparishengineering.co.uk](http://www.grahamparishengineering.co.uk)

Contact us on 01284 828118 or  
Email [parisheng@btconnect.com](mailto:parisheng@btconnect.com)

# Cockfield Contacts

October 2020 Web

|                                       |   |  |
|---------------------------------------|---|--|
| CATEY Pre-School                      | Teresa Rutterford   | <a href="mailto:catey@cockfield.org.uk">catey@cockfield.org.uk</a>                         |
| Cockfield Carpet Bowls Club           | June Pettit   | <a href="mailto:carpet.bowls@cockfield.org.uk">carpet.bowls@cockfield.org.uk</a>           |
| Cockfield Cemetery                    | Ralph Turner  | 828201   |
| Cockfield Charities                   | Tony Box  | <a href="mailto:charities@cockfield.org.uk">charities@cockfield.org.uk</a>                 |
| Cockfield Congregational Church       | Pastor Gordon Hold  | 01284 762663   |
| Cockfield Football Club               | Joe Brinkley  | <a href="mailto:football@cockfield.org.uk">football@cockfield.org.uk</a>                   |
| Cockfield Netball Club                | Lindsee Summers   | <a href="mailto:netball@cockfield.org.uk">netball@cockfield.org.uk</a>                     |
| Cockfield Post Office                 | Barbara Turner  | 01284 828201   |
| Cockfield Primary School              | Trudie Harkin Headteacher                                     | <a href="mailto:admin@cockfield.suffolk.sch.uk">admin@cockfield.suffolk.sch.uk</a>         |
| Community Council Secretary           | Janne Cutting-Keyton  | <a href="mailto:community.council@cockfield.org.uk">community.council@cockfield.org.uk</a> |
| Computer Circle, e-news               | <a href="mailto:Neil.Ashton@cockfield.org.uk">Neil Ashton</a> | <a href="mailto:computer.circle@cockfield.org.uk">computer.circle@cockfield.org.uk</a>     |
| County Council - Local Member         | Robert Lindsay  | 07738 264087   |
|                                       |   | <a href="mailto:robert.lindsay@suffolk.gov.uk">robert.lindsay@suffolk.gov.uk</a>           |
| Dentist                               | Lavenham Dental Practice                                      | 01787 247058   |
|                                       | Paul Rolph & Associates                                       | 01787 247046   |
| District Council                      | Babergh offices   | 0300 1234000   |
| Local Member                          | Clive Arthey  | 01787 211316   |
|                                       |   | <a href="mailto:clive.athery@babergh.gov.uk">clive.athery@babergh.gov.uk</a>               |
| Local Member                          | Margaret Maybury  | 01787 464358   |
|                                       |   | <a href="mailto:Margaret.Maybury@babergh.gov.uk">Margaret.Maybury@babergh.gov.uk</a>       |
| Doctors                               | Long Melford Practice   | 01787 378226   |
| Earls Meador/Bruffs Line              | Rodney Williams   | <a href="mailto:earls.meadow@cockfield.org.uk">earls.meadow@cockfield.org.uk</a>           |
| Footpath Warden                       | Ralph Turner  | <a href="mailto:footpaths@cockfield.org.uk">footpaths@cockfield.org.uk</a>                 |
| Friends of Cockfield School FOCSA     | Mark Aston  | <a href="mailto:fosca@cockfield.org.uk">fosca@cockfield.org.uk</a>                         |
| Green Links - Village Magazine        | Janne Cutting-Keyton  | <a href="mailto:green.links@cockfield.org.uk">green.links@cockfield.org.uk</a>             |
| Mini - Bus Hire (Office Hours only)   | Carl Brinkley   | <a href="mailto:minibus@cockfield.co.uk">minibus@cockfield.co.uk</a>                       |
| Parish Council Clerk                  | Steve Ball  | <a href="mailto:parish.council@cockfield.org.uk">parish.council@cockfield.org.uk</a>       |
| Pavilion Administrator (C.C. Council) | Rodney Williams   | <a href="mailto:pavilion@cockfield.org.uk">pavilion@cockfield.org.uk</a>                   |
| Pharmacy                              | The Lavenham Pharmacy   | 01787 247284   |
| Stanningfield & District Agric. Club  | David Simpson   | <a href="mailto:stannag.club@cockfield.org.uk">stannag.club@cockfield.org.uk</a>           |
| St. Peters Church                     | Rev. Sharon Potter  | 01284 828599   |
| Church Wardens                        | Norman Kelly/David Smith                                      | <a href="mailto:church.warden@cockfield.org.uk">church.warden@cockfield.org.uk</a>         |
| Village Hall - Bookings               | June Pettit   | <a href="mailto:village.hall@cockfield.org.uk">village.hall@cockfield.org.uk</a>           |
| Secretary                             | Vera Shepherd   | <a href="mailto:village.hall@cockfield.org.uk">village.hall@cockfield.org.uk</a>           |
| Village Recorder                      | Brenda Dyer   | <a href="mailto:recorder@cockfield.org.uk">recorder@cockfield.org.uk</a>                   |
| Women's Institute Secretary           | Suzanne Veal  | <a href="mailto:w@cockfield.org.uk">w@cockfield.org.uk</a>                                 |

Kathryn Vernon



Printed by Gipping Press of Needham Market