

Green Links

The Monthly Village Magazine of Cockfield

May 2022

Cockfield Community Council

Cockfield Art Show 2022

Sunday 29th May to Friday 3rd June
10am - 4pm daily
Cockfield Village Hall

Over 650 works for sale by 100 local artists
plus hand crafted items
Free Entry



Home Made Refreshments and Light Lunches served

Credit/debit cards accepted for art purchases
01284 828264 or www.cockfield.org.uk

Green Links Copy Deadline!

Please note all copy for the June issue must be
with me by 15th May please

Janne Cutting-Keyton, Newholme, Smithwood Green,
Cockfield. IP30 0JQ
01284 828264 or janne@twerbs.co.uk

Would you like to Subscribe to Green Links

There are currently over 400
subscribers to Green Links in
Cockfield and the
surrounding villages.

An annual subscription is
£3.00 payable in August.

The magazine is
delivered to your door by a
team of local volunteer
distributors.

Please contact
01284 828264
for further details

Cockfield Village Hall

Available for hire at very
reasonable rates

Please contact
June Pettit
for bookings or for
further details
cockfield.org.uk/villagehall

Please spread the
word about our
super village hall,
huge car park
and full facilities

GREEN LINKS ADVERTISING

To place an advertisement in Green Links
or enquire about our rates please contact

Sue Harrison at
sue.harrison42@gmail.com

Green Links



The Monthly Village Magazine of Cockfield
Edition 4- No 176 May 2022

Chairman and Distribution
Editor
Secretary
Advertising Manager

David Simpson
Janne Cutting-Keyton
Morag Kelly
Sue Harrison

Cockfield is strong on community, the recent Litter Pick had more volunteers than ever before and the Police Cadets also joined in, the Jubilee arrangements are coming together to provide the largest Community Event Cockfield has seen, the Duck Race on Easter Saturday was a success, the Community Council programme of events is ever expanding and the Cockfield Art Show is billed as being the largest in East Anglia.

The school is also focusing on Community next half term and if anyone in the local community would like to go in to the school for an Assembly/Collective Worship to talk about something you want to share about the local community you would be most welcome, the school is open to suggestions! If you have something you would like to share please contact them on 01282 828287 or email admin@cockfield.suffolk.sch.uk

Although the Jubilee Big Lunch is a free event you do need to register for Big Lunch tickets, we are limited to 650 people so please get the invitations forms filled in and back to the organisers by the 9th May deadline.

We all need to belong somewhere, to be able to put down roots and be part of a community and Cockfeild is certainly a good place to be.

Janne

www.cockfield.org.uk

The Editor and Management Committee cannot be held responsible for the accuracy of articles or for any of the claims made by any advertiser and reserve the right to alter, shorten or refuse any items submitted for publication. All copyrights acknowledged.

Earl's meadow Duck Race Easter Saturday

It was a truly beautiful morning, the sun was shining brightly across the newly harrowed and cut meadow and the beauty of the scene was a true testament to the hard work put in by volunteers over winter and spring.



The centre of operations for the duck race was at the middle shed, one moment there was nobody, and you wondered if, after two years of covid, anyone was going to turn up at



all; the next moment the place was thronging with children and adults of all ages and, it was lovely to see so many newcomers. Welcome to the village one and all!

Over the spring months, a lot of work has taken place clearing the stream banks of the Jeffery's Green Meadow, so it was decided to start the race there... So we all trooped back over Bruff's Line where most people decided to stand on the newly refurbished sleeper bridge and watch the ducks coming toward them.

The ducks were launched and sedately made their way towards the bridge, the volume and pace of the water could hardly stand shoulder to shoulder with the Severn Bore but it was good enough for our needs. Next came the twin tunnels of the culvert, Mel, the official duck herder , ushered the ducks through one tunnel and I chivvied them through the other, as the crowd thronged to the finish line by the steps, there was much excitement as everyone tried to spot their duck, as the ducks headed towards the net.

Albie acted as judge and catcher and relayed the results to Rachel. Then it was time for the second race.

There were prizes of Easter Eggs for the winning (and the last) duck in each race but no child went away without a gift of chocolate.

It was lovely to see that some families stayed for a picnic, and lovely to return later and find not a scrap of litter.

A beautiful morning, a beautiful location, being enjoyed by so many.

And still glides the stream ready for next year.



Thank you to everybody who created the surroundings and to those who made the duck race possible and to all who gathered together to celebrate on this special morning.

RW.

Cockfield's celebrations
for HM the Queens
Platinum Jubilee

Scarecrow Competition



Entry Forms are in Green Links.

This will be a free to enter competition to build a scarecrow of the Queen to be displayed over the Jubilee Weekend.

Marks will be awarded for originality, build quality and style.

To get you thinking here are some ideas.



NOT this Queen



Cockfield's celebrations
for HM the Queens
Platinum Jubilee



Scarecrow Competition

This will be a free to enter competition to build a scarecrow of the Queen to be displayed over the Jubilee Weekend.

Marks will be awarded for originality, build quality and style.

Judging will take place over the Jubilee weekend between 9am on Thursday 2nd June and 6pm on Saturday 4th June.

The winning entries will be announced at The Big Lunch on the 5th June.

Rosettes will be awarded to the winning entries.

Please have your scarecrows in place for 9am on Thursday 2nd June .

I/we wish to enter the Jubilee Scarecrow Competition

Name

Our Scarecrow will be situated at

Please return this form to Cockfield Post Office or enter via email to jubilee@cockfield.org.uk by Monday 30th May



Cockfield's celebrations
for HM the Queens Platinum Jubilee
(organised by Cockfield Parish Council)

**Thursday 2nd June,
on Great Green
Beacon Lighting and
Toast to Her Majesty
Gathering at 7.15pm,
Beacon lighting 7.45pm**

This is an open event to which everyone is invited.

**Sunday 5th June Great Green
Cockfield's Big Jubilee Lunch**

This will be a ticketed event for the
residents of the Parish of Cockfield.

HAVE YOU RETURNED YOUR INVITATION!

If you are able to offer financial support, in order that the celebrations
can be free to all Cockfield residents please see page 11.



The Queens Platinum Jubilee Celebrations in Cockfield are being led by the Parish Council in conjunction with other village groups and organisations.

On Thursday 2nd June, along with communities across the country and Commonwealth, our beacon will be lit and a toast will be offered to the Queen.

This will be an open event to which everyone is invited.

On Sunday 5th June Cockfield's Big Jubilee Lunch will take place in a marquee on Great Green. This will be a ticketed event, free to residents of the Parish of Cockfield, with lunch, live music and a paid bar.

Every house in the village has been hand delivered an invitation - you need to reply, by 9th May, if you are attending. This will be the largest event Cockfield has ever put on with numbers around 650 expected to attend.

If you live in the Parish of Cockfield but are not on the Electoral Roll please contact jubilee@cockfield.org.uk to be included on the invitation list.



Our celebrations will take a lot of organisation and will need volunteers to help with not only the planning but in areas such as decoration of the marquee, catering, parking, administration and of course clearing up - the list goes on.

If you are willing to help in a specific area or in general or if you have an idea to put forward please contact Janne Cutting-Keyton on 01284 828264 or jubilee@cockfield.org.uk

The cost of putting on these events is high, to enable all residents to attend the Parish Council is looking for donations from businesses and residents.

To make a donation please contact the Parish Clerk, Steve Ball on 01284 828987 (10am - 4pm) or parish.council@cockfield.org.uk

We want this to be a memorable weekend especially for the children of the village and one that can be spoken of for years to come.

Please help where you can.

Platinum Jubilee Planting



Plant up a hanging basket or a planter with red white and blue annuals.

You may still be able to order plug plants online. Alternatively, annuals are usually available locally.



Plant suggestions

Trailing verbena or lobelia
Petunias, salvias,
busy lizzies.
Geraniums.



Cockfield Community Council Presents

The Platinum Party

Saturday June 4th

The Marquee, Great Green

As part of the village celebrations to mark
Her Majesty the Queen's Platinum Jubilee

***Featuring live music from
the Excellent Local Band***

Turntable

www.turntableband.co.uk

Join us for a fun family
evening of music and
dancing for just **£5** a
head!!



Further information will be announced in the
coming months.

Please mark the date in your diaries:

Saturday June 4th

So what were these youngsters doing in the Village?



They along with residents were out and about over the weekend 19/20th March litter picking..



Cockfield was certainly spruced up for the spring with an amazing volume of rubbish collected.





Grateful thanks to the Police Cadets, to PC Darren Marshall for organising them, to all the pickers and to Hodge Farms for hosting the equipment and rubbish.

Thank you everyone.



Janne Cutting-Keyton
Cockfield Parish Council



Betty & Bramble's

Professional Dog Grooming & K9 Care



Making Your Dogs Our Business

For more information, please contact

Lisa on New ☎

07535 076726

Bury Road, Cockfield, Bury St. Edmunds,
Suffolk, IP30 0LB

 www.bettyandbrambles.co.uk

 @BettyAndBrambles

Dance Fitness

*Lose yourself in the
music find yourself In
shape!*

Julie Goodman

Tele: 07815497952

Email:

jgoodsm@btinternet.com

Classes held every

Wednesday 7-8pm

Cockfield Village Hall

Church Lane, Cockfield

Bury St Edmunds

IP30 0HA

£5.00

Ages 16 & over!





Cockfield Parish Council

Notes

Summary report of the Ordinary Parish Council Meeting on 24 March 2022

Please note: 'To obtain a copy of the full formal minutes of this meeting, please email the Parish Clerk, parish.council@cockfield.org.uk'

Greens Management: In Cllr C Brinkley's holiday absence, there was no update on Hewick's decision as to whether they are able to provide edge grass cutting services on the Great Green. Cllr Golding is also to obtain quotations from two local contractors to undertake edge cutting in the interim.

Village Hall Car Park: Cllrs Cutting-Keyton & Levett, will be meeting with contractors on site to discuss the Village Hall Car Park maintenance requirements over the next two weeks.

BMSDC Public Realm Land: The Clerk has written a formal letter of complaint to the CEO of BMSDC, but has only received an acknowledgement and promise of a full response.

The Clerk has chased up a response and requested details of who Emily Attack (BMSDC Assistant Director) has notified within SCC Highways to get the fence moved.

Queens Platinum Jubilee Celebrations 2022: The Clerk is assisting Cllr Cutting-Keyton with the distribution of Invites throughout the village.

The Clerk has written to the Cross Green resident granting permission to use Cross Green for a local planned event and outlining conditions for its use.

Playground: The Clerk has received a quotation to dig out the stumps/roots of the three shrubby trees, recently cut down on the Great Green to improve driver visibility approaching the Playground.

Local Needs Housing - Registration of Jeffreys Green as a Green: The Clerk has determined that the formal process is written around the historic granting Green status to areas in existing use, not the creation of new greens. Therefore, the Council will continue to look into how it can overcome this obstacle.

Highways & Emergencies: The Clerk (as requested) forwarded details of the PC's ongoing problems in obtaining SCC's permission to erect safety signage, to District Cllr Arthey to enlist his assistance.

Councillors robustly challenged SCC Cllr Lindsay on SCC Highway's poor service and apparent apathy in progressing a number of issues. Cllr Lindsay had spoken to SCC Head of Road Safety who believes it feasible, but we still have not received their approval so would chase them again. The Clerk will also write to SCC's Cllr Paul West complaining about the delay and requesting a meeting on site to discuss the proposed footpath.

Public Participation Session: Suffolk County Cllr Lindsay has escalated to SCC Cllr Paul West, the issue of skirting back the footpath at Cross Green. District Cllr Arthey has also escalated the issue as it is not a BMSDC responsibility but agreed that SCC and BMSDC will cover the cost. Cllr Arthey hoped that he would be able to include Cockfield onto a twice-yearly rota of pavement sweeping.

District Cllr Maybury circulated her report in advance of the meeting but was not in attendance to add further to her report.

District Cllr Arthey reported that:

There would be a Council Tax Rebate Scheme of £150 for Band A-D properties, Renovation loans up to £20k would be available for properties that had remained empty for a period of time,

There would be a new BMSDC campaign encouraging disposal of glass via Bottle banks rather than in domestic Blue and Black Bins,

The Jeffries Green development in Cockfield has contributed to BMSDC achieving their bungalow target.

Planning Applications Received for consultation:

DC/22/00912 : Proposal: Householder Application. Erection of two storey extension, including single storey flat roof linking element. Abbey Farm, Bury Road, Cockfield, Suffolk IP30 0LB. **The Parish Council Supports this Application.**

DC/22/00178: Planning Application - Installation of 16no. ground based solar panels. Drift Barn, Chapel Road, Cockfield, Suffolk IP30 0HE **The Parish Council Supports this Application.**

DC/22/01254: Full Planning Application - Construction of staff car parking area. Loft Farm, Cross Green, Cockfield, Suffolk IP30 0LJ **The Parish Council Supports this Application.**

Planning Decisions Notified by BMSDC:

DC/21/05655: Application for Outline Permission (Access points to be considered, Appearance, Layout, Scale and Landscaping reserved) Town and Country Planning Act 1990 - Erection of 1No self-build dwelling and cart lodge. Land at Wix House, Great Green, Cockfield, Suffolk IP30 0HQ. **Decision: Outline Planning Permission has been Refused.**

Queens Platinum Jubilee Celebrations 2022: Cllr Cutting-Keyton provided an extensive update that all arrangements were moving at a pace and now substantially in place.

Plough & Fleece ACV – Community Right to Bid: No one from the Cockfield Community Group was in attendance to provide an update on the Community Right to Bid Process. The Clerk advised that the Group had delivered mailshots to every property throughout the village, containing questionnaires to gauge the level of local support for the Pub. The Group have recently met with the Plunket Foundation and will provide a full update at the April PC Meeting.

Neighbourhood Plan: The Chairman thanked the Clerk for his briefing note which helped to inform discussions. Cllrs debated the benefits versus the cost and resource demands and agreed unanimously not to pursue a Neighbourhood Plan. District Cllr Arthey agreed that the costs would probably outweigh the benefits and said that once BMSDC's JLP was adopted, then Cockfield would be better protected against unwanted development.

Cockfield Pavilion Hire: It was proposed by Cllr Golding and seconded by Cllr Morley that Cllrs consider any 2021/22 Pavilion hire fees at the end of the season, and proposed that £1,200 be charged for 2022/23 season. The proposals were carried.

Cllr Joe Brinkley had advised the Clerk that he needed to raise an Invoice for £350, to enable Bury Town FC Boys U10 team to pay for their pitch hire for 2021/22.

Risk Register: The updated Register was adopted.

Glebe Land: Cllr Webster confirmed that he had improved the visibility splays when exiting the Glebe land, by trimming back the hedge at the entrance. Attempts to obtain quotations for weed killing and rotovating has been put on hold due to the current shortage of weed killer. Cllr Webster is pursuing an alternative supplier.

Earls Meadow: Cllr Morley advised that the Queens Platinum Jubilee Plaque had been placed adjacent to the Walnut tree planted in Earls Meadow.

Cemetery: Cllr Turner advised that R Williams would be increasing his 2022/23 charges for cemetery grass cutting. Cllr Turner advised that he would be benchmarking Cockfield's Cemetery Fees against other Parishes.

Pavilion: The Clerk's meeting on 24/03/22 with the Loss Adjuster's Engineer was deferred until 21/04/22 as the Engineer had Covid.

CIL Working Group: The Consultant Engineers have produced a plan of the new Bus Shelter Base. Cllr Morley has held initial discussions with the land owner over the acquisition of the additional land needed for the extended base.

Highways and Emergencies: A very positive response was received from residents and the areas were allocated in record time for this year's annual Litter Pick. Thank you to all the pickers and to PC Darren Marshall who organised a group of Police Cadets to pick along the A1141.

Thank you to Hodge Farms for making the barn available to collect the pickers and to drop off the rubbish.

Correspondence noted / for action:

BMSDC Enforcement Update: 18/00226/UST - The Old Piggeries - Untidy Site and Change of Use from Agricultural to Residential.

BMSDC Acknowledgement letter from CEO regarding PC's complaint.

Donation from Mr Henry Ford towards the Queens Platinum Jubilee Event. The Parish Council would like to thank Mr Ford for his kind donation.

Vertas Grounds Management Contract. The Clerk has signed and returned the Contract for Great Green cutting.

The Parish Council may be contacted through the Clerk, Steve Ball by email at:
parish.council@cockfield.org.uk or 01284 828987

Next Meeting - The next Ordinary Meeting of the Council will be held
on Thursday 26th May 2022 at 7.30pm in Cockfield Village Hall

Cockfield Community Coffee
4th Thursday of the month
Cockfield Village Hall - Committee Room
10.30am - 12 noon

No Charge but donations are welcome
Enquiries please email wi@cockfield.org.uk



Thank you for taking the time to come and visit Jeffreys Green.

We're very proud of what's been achieved here in close partnership with the Parish Council and Suffolk County Council.

The development is an exemplar project which delivers mixed tenure homes, contributing to meeting the varying housing needs and to the future sustainability of the village and the surrounding communities.



Development Overview

Overall, the site provides 54 new homes:

- 18 affordable homes – rented and shared ownership, with priority for people with a local connection, where Orwell Housing Association are the landlord
- 3 affordable rented bungalows where Babergh District Council are the landlord
- 24 open market homes for sale by Orwell Homes Limited (the private development arm of Orwell Housing Association)
- 9 self-build plots for Suffolk County Council

Development Progress

- Work started on site in December 2019 and began with the construction of 18 rented and shared ownership affordable homes.
- We also began working with Babergh District Council to incorporate adjacent land they owned to provide 3 affordable rented bungalows. Construction of these bungalows began in August 2020.
- The properties were completed in May 2021, and new residents moved in.
- In May 2021 we also started construction of the first 11 open market homes which are due for completion at the end of April.
- We will shortly be start construction of the remaining 13 open market homes and these are expected to be complete in Spring 2023.



Other Information

- Suffolk County Council have retained the land for the self-build plots, and these are being marketed by Fenn Wright
- Fine & Country Estate Agents are marketing the open market plots on behalf of Orwell Homes Limited.



SPECIALISTS IN OIL BOILERS, SERVICE, REPAIR & REPLACEMENT

- Oil tank replacement
- Hot water cylinders serviced, repaired and replaced
- Heating service repair, replacement and upgrade
- Bathroom/showers installed and all other general plumbing work
- 95% breakdowns repaired within 1 hour on site - Fast response
- All work guaranteed for a minimum of 12 months - parts and labour



Todds Removals

& Todd Storage

a reliable local service you can trust

Removals

Storage

Packing materials

Packing service

UK, Europe and beyond

Home or Business

Self Storage

Moving?

Call us on **01787 377 489**

www.todds-removals.co.uk



Memb No: T027



Leon Brown

Arb-Agri Contracting

Tel: 01359 408521

Mobile Number: 07552393830

e-mail : leonbrown.28@hotmail.co.uk

**** Tree Surgery Services ****

* Dead Wooding & Crown Lifting

* Felling & Sectional Dismantling

* Woodland Management

* Crown Reductions

* Hedge Cutting

* Chipping

* Firewood

* Garden & Site Clearance

* General Ground Maintenance

ORWELL HOMES LIMITED

FOR SALE



Jeffrey's Green, Cockfield

A beautiful, bespoke development attractively designed to complement the local community.

**14 new homes due for completion spring 2023
including bungalows ideal for downsizing.
Please contact us for more information.**

3 x 2 bedroom bungalows
3 x 2 bedroom houses
6 x 3 bedroom houses
2 x 4 bedroom houses

sales@orwellhomes.co.uk / 07595 120688

Garden Tips for May 2022

Flowers & Grasses

- Start thinning out hardy annuals which you have sown direct. This will promote healthy and strong growth.
- Trim back spreading plants like Aubretia, Candytuft after flowering to encourage new growth.
- If Forget-me-nots are taking over remove surplus plants to prevent heavy self-seeding.
- Sweet Peas will be making good growth so you should ensure they are supported by plant support rings or tied in to canes.
- Continue to water container plants especially during prolonged periods of dry weather. Start feeding containers with a liquid feed once a week.
- Get the children involved and sow sunflowers directly where they are to flower. They will enjoy seeing how tall they grow.
- Dahlias and Cannas can be planted out once all danger of frost has passed.
- Sow nasturtiums in pots or directly into the border. Not only are they colourful but their flowers can be used to decorate salads and their leaves have a peppery taste.



- You can direct sow poppies, cornflowers and scabious which will attract bees and butterflies in to your garden.

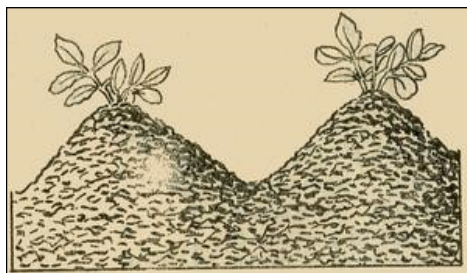
- One of my favourites is Nigella (Love in the Mist) which can also be sown directly. It has lovely feathery foliage, pretty flowers and interesting seed pods. Beware it does self – seed very easily.



- If you are growing lilies in pots watch out for the red lily beetle. Remove and dispose of.
- Vine Weevil larvae can be a real threat to plants grown in containers. Check out the various chemical or preferably biological controls available.
- Divide Hostas as they are coming into growth.
- Continue pricking out seedlings and potting on to encourage the production of a healthy root system.
- Now is a good time to take cuttings of tender perennials such as fuchsia and pelargoniums (tender geraniums). Check out YouTube for a demonstration.
- Refresh permanently planted pots/containers by top dressing with fresh compost.

Fruit and Vegetables

- Protect strawberries with straw. This will help in two ways. It will lift the fruit off the ground and suppress weeds.
- Continue to earth up potatoes; simply draw the soil over the shoots to cover them again.
- Time for rhubarb crumble. Make sure you only harvest a third of the total stems at any one picking. You shouldn't cut the stems with a knife just gently pull and they should come away from the base of the plant easily.



- If you have young fruit trees they will be putting on rapid growth so you need to ensure they are well-watered especially in dry weather.
- Hang pheromone traps in plum and apple trees to control fruit and codling moth activity.
- Check gooseberry bushes for signs of green gooseberry sawfly caterpillars and remove.
- Plant greenhouse tomatoes in greenhouse borders or grow bags.
- Thin out spinach, carrot and lettuce seedlings which have been directly sown. You should then water thoroughly.
- Protect carrots from carrot fly by covering with horticultural fleece. Planting parsley or leeks close by can also deter this pest.



Trees, Shrubs & Climbers

- Ensure that any newly planted trees are watered during any prolonged periods of dry weather. Try to use rainwater or recycled grey water if possible.
- Evergreen shrubs - Prune out any frost damage branches.
- Once Clematis Montana has finished flowering prune back hard. This will ensure that the plant remains under control and encourage strong growth for flowering next year.
- Choisya (Mexican Orange blossom) – once flowering has finished hard prune. Another shrub, the evergreen Viburnum Tinus can also be trimmed to maintain a good shape and encourage the formation of flowers for next year.
- Other spring flowering shrubs that should be pruned immediately after they have finished flowering are Deutzia, Kolkwitzia, Weigela and Philadelphus.
- Prune wall trained Pyracanthas by shortening new growth to about 3 inches (8cm). This should encourage increased flowering which in turn will provide a great display of berries in the autumn.



- Prune back Lilac trees and bushes once flowering is over. Initially cut back all spent flowers and then remove any crossing branches and any dieback. Remove any suckers from the base. Mulch and apply a general fertiliser to encourage healthy growth for next year.
- Check Roses for any sign of black-spot. If detected then treat with a systemic fungicide particularly suitable for roses.
- Prune back plums and cherries. Aim to create an open centre to allow plenty of air and light.



Lawns

- Continue sowing lawn seed and repairing any bare patches in the early part of the month
- Feed your lawn with a high – nitrogen fertiliser.
- For any brand new lawns you should wait until growth reaches 3 inches or more and then mow initially on a high setting.
- Apply lawn weed killer to established lawns this month.
- Lower mower blades to normal summer height.

General Maintenance and planning

- Clip evergreen hedges early May before bird nesting is in full swing.
- If weather dictates, control heat in the greenhouse with shade paint and automatic vents.
- Hang fly traps in your greenhouse this will help monitor and reduce whitefly and other pests.
- Feed your pond fish little and often.
- If the weather is fine and sunny blanket weed and duckweed will start to colonise the pond surface. You should remove this (a cane to hook and twist blanket weed and a child's fishing net are great for removing duckweed). Once removed lay the discarded weed at the side of your pond to allow insects and other pond inhabitants to escape and return safely back to the water.



Keep safe and well, happy gardening.

Kate Ransom



I am a single parent, with two young children. I am already struggling to stay on top of my household bills; my weekly food shop isn't stretching as far anymore and now my energy bill is going up too. I don't know how I'm going to afford all of these price rises. What can I do to stop my finances spiralling out of control?

First of all, you are not alone in this and there's support to help you. It's always worth checking if there are benefits you don't know about that you're eligible for, including support with your energy costs and living costs. On the Citizens Advice website, www.citizensadvice.org.uk, there's a benefits calculator, advice on how to reduce living costs and information on other ways to increase your income.

There's also emergency support that you may have access to, such as food bank vouchers or fuel vouchers. You could contact your local council to see if they could also offer support.

If you're struggling to stay on top of bills, it's really important to understand what money you have coming in and going out each month. Citizens Advice has a budgeting tool on its website that can help with this.

And if you're already behind on bills, prioritise paying your rent or mortgage, plus energy bills and Council Tax first. Not paying these bills has the most serious consequences. You should speak to the person or company you owe money to, to see if they can help you repay your bills sustainably.

We know that times are incredibly tough but please remember, you don't have to face this alone, do contact your local Citizens Advice to help you find a way forward.

If you need advice and support Sudbury & District Citizen Advice is currently providing advice by telephone and email Monday – Thursday, 10am – 1pm. Please phone 01787 321400 and leave a message and someone will call you back when available. We will attempt three times to call you back, so please expect a call from a withheld number. Alternatively, contact us via email at advice@sudburycab.org.uk or by using the contact facility on our website, <https://www.sudburycab.org.uk/contact>.

United Charities of Cockfield

Important – help required

It has been a difficult two years during the covid 19 pandemic. Although there is some cause for optimism, many people are facing higher household bills due to increases in costs for power and other essentials and for some these will be difficult to manage or afford.

For people living in the Parish of Cockfield the United Charities of Cockfield (the first dating from the 17th century and some later), still help those in need by providing some vital support.

Do you need help or do you know someone who might need assistance? Whilst restrictions within the deeds limit how the funds may be used, the Trustees main problem is that it is difficult to know who in the Parish might be able to benefit from some support. Last year we were able to help some residents but it is probable that there are others who would meet the conditions and should receive support. All approaches are dealt with in the strictest confidence, and if you consider that you, a relative or someone you know may need some help please contact me, or one of the trustees, so that we may consider the situation.

I can be contacted on charities@cockfield.org.uk

Tony Box
Chairman, United Charities of Cockfield

***Special cakes for
special celebrations***

Jean Barker

www.amazingcakesbyjean.co.uk



01359 241135

Cockfield W.I.

April Meeting



We began our meeting with a minute's silence in memory of Beryl Gibson who passed away recently.

Many of you will remember her amazing needlework and crafting skills which she shared with us through workshops, passing on her quilting and patchwork knowledge, instructing beginners as well as helping others improve their techniques. A member of the former craft group she and the other ladies helped make a beautiful patchwork bedspread which was later raffled for charity. She also stitched one of the cockerels on the wall hanging above the door in the village hall. If anyone required alterations to a garment Beryl was happy to assist in the process. Her hands were never idle whether it be knitting, sewing, crafting or baking.



After living many years in Cockfield Beryl moved to Lavenham but continued to attend meetings until ill health forced a move to a home near her daughter Pippa in Oxfordshire.

A kind and talented lady, many of us will have happy memories of times spent in her company.

Many of us hope to attend her funeral service on Tuesday 19th April 2pm at Cockfield Church.

Two members had attended the Federation Annual Meeting at Culford School that day and Brenda Dyer gave a short report of the proceedings and guest speakers.

Marianne Simpson thanked all those members who had catered and helped at her 'Special Birthday' party.

We are busy planning for our Annual Meeting on May 5th where we will appoint a new committee and President.

Platinum Jubilee events in June have meant our meeting will now be on Thursday 9th which will be a garden meeting weather permitting.

We welcomed our change of speaker Sarah Jones (Neil Ashton asked if could swap as he was rather busy with wedding arrangements) an Emotions Coach who offers support for those with mental health problems. She spoke about ways of overcoming being emotionally overwhelmed and lacking in self-worth particularly in young people by unhelpful thinking habits. Once you can identify these thoughts, you become more aware of them and can challenge and distance yourself from them and see situations in a different and more helpful way.

Visitors are always welcome at WI meetings.

Report BC

The Cockfield Contribution to the Queens Green Canopy.

The Parish Council have honoured the initiative promoted by HM Queen Elizabeth II to commemorate her accession to the throne 70 years ago by planting a Walnut Tree at Earls Meadow. You may be interested to know the source of the tree and the significance of the site.

Earls Meadow was created for the village as a recreational area for dog walking and general relaxation taking into account the natural beauty and the unspoilt Suffolk countryside. The Walnut Tree originated from a stock within the village-propagated by wildlife and grown on to be planted out.

Going back over 20 years I was asked to be the Village Tree Warden which has been an eventful experience one way or another being responsible for many plantings and tree surgery as neededthis Walnut Tree represents the following journey.

June Forrest joined the Parish Council at the same time as Paul Brinkley and myself in the late 90's. June was a real character and lived at Smallbridge House on the Bradfield St Clare road and offered me a young Walnut Tree from her garden to celebrate my appointment as Tree Warden - a kind if slightly tongue in cheek gesture.

We planted the said young Walnut Tree in our garden and June was given frequent progress reports on its growth. Surprisingly it has made excellent growth over the years and is now as tall as our barn and has offered walnuts a plenty for at least 10 years. Not surprisingly the squirrels discovered the tree and we harvest very few walnuts but have plenty of young walnut saplings growing in the garden and flower pots courtesy of the squirrels.

The Walnut Sapling taken to Earls Meadow is from this stock which I have grown on for the last couple of years during Lockdowns and it was agreed by the Parish Council that the time is right for this young tree to greet the world! All contents were emptied from the planter the sapling had grown in including the daffodils and tulips.

After planting the Walnut Tree the Parish Council purchased a plaque from the Royal British Legion to commemorate the Queens Green Canopy.

Next time you visit Earls Meadow - which is fantastic this time of year - give the Walnut Tree a look it is half-way along Earls Meadow near the river.

You could call it the Cockfield Walnut! Hopefully in a few years it will stand tall and proud and you can tell your grandchildren the story of the origin of the Walnut Tree.

RM



COCKFIELD COMMUNITY CINEMA PRESENTS
BELFAST (12A)

Friday 27TH MAY

Cockfield Village Hall

Doors Open: 7pm – Film starts: 7:30pm

Tickets on the door

Adults: £4.50 / Under 16s: £3.00

Raffle, Refreshments & Licensed Bar available from 7pm



Belfast, 15 August 1969.

Surrounded by sporadic violence and growing danger, nine-year-old Buddy finds himself confronted with the ugly reality of sectarian conflict. And, as the suffocating stranglehold of increasing turmoil tightens around his once-peaceful working-class neighbourhood,

Buddy tries his best to understand The Troubles--after all, someone must be responsible for forcing people to flee their homes. Now, Buddy's family must come face to face with a nearly impossible, life-altering decision: stay or start packing?

MONTHLY SCREENINGS

**4TH FRIDAY OF THE MONTH
FOR FUTURE SCREENINGS**

VISIT: www.cockfield.org.uk

COCKFIELD COMMUNITY SALE TRAIL SUNDAY 17TH JULY 9AM-1PM



If you wish to take part please return completed forms & £5.00 entry fee to Cockfield Post Office

FORMS MUST BE SUBMITTED BY SATURDAY
9TH JULY TO
GUARANTEE A PLACE ON THE MAP
Pitches also available on Great Green

ON THE DAY MAPS WILL BE
AVAILABLE FROM ALL STALL HOLDERS
Enquires email: sale.trail@cockfield.org.uk
FORMS AVAILABLE www.cockfield.org.uk
or from Post Office

Inquisitive Nibblesome Sheep.

At a place where I work in the village there is a little meadow adjoining the property which is home to four sheep. Now I am no sheep expert and don't know what breed of sheep these are but they are large and white and woolly, they are also some of the most sociable sheep it has ever been my privilege to know, the moment they catch sight of me , you will hear a bahhhh go up and they come dashing over to see what I am up to. I don't know how best to describe how sheep move, be it a run, a trot, a gallop or a lumber, but somewhere in their movement there is always a spring and sproing, a bounce and a boing and they cover ground very quickly.



In mid Spring, after the storm, there was a small cherry tree about to blossom which had been blown over from the garden hedge and was overhanging the field, my job was to clear this tree away , burn the brush in the field and save what firewood I could.

So I armed myself with the necessary tools and sallied forth. In minutes I had a small troop of Ovine spectators come to see what I was up to. I had to keep these sheep safe as I worked , no easy task as sheep are naturally inquisitive.

I managed to cut through the trunk without flattening any of my companions but the moment the branches lay softly on the field the sheep were amongst it, nibbling the newly springing buds,

I spoke to them many times about the niceness of mint sauce to try to keep them at bay but they took no notice, somehow I managed to get the tree cut up, the bonfire built and the firewood stacked, "helped" at every step by the sheep. I was sure that they would disperse as soon as the bonfire was lit, how wrong I was.

As I got on my hands and knees to light the fire and, as it caught, I turned to look at the sheep. One was standing full in the smoke and sparks calmly eating the buds off the sticky out branches , one was licking the oil off the blade of the chainsaw (fortunately it was turned off), one was intently studying the financial section of the newspaper I had used for fire lighting, but when it could see no future in the Dow Jones Index, it proceeded to eat the paper. The fourth was nibbling at my hair and my shirt collar.

Once the fire took hold properly they did amble away but I had to go after the one who had been standing in the smoke and pat her down to ensure that she didn't have any sparks in her fleece,

On reflection, the amount of time it took me to do the job in hand around those sheep safely meant that I earned well under minimum wage but such company is worth more than money.

RW



Town & Country Interiors

All aspects of building work undertaken.

Extensions, renovations, kitchens, bathrooms and bedrooms.

Please call 01284 828 592 or 01787 282 353 or visit our website www.tcisuffolk.co.uk



NEW FARM SHOP

- Local Produce
- Fruit and Veg
- Delicatessen
- Butchers
- Wines, cordials, soft drinks

Tel: 01284 386015

www.hennesseylifestyle.co.uk

info@hennesseylifestyle.co.uk

Overland Business Park, Sudbury Road,
Bury St Edmunds, IP30 0UL

BRADNAMS TREE SERVICES

All aspects of tree surgery undertaken

Hedges expertly managed

Free Estimates

Stuart Bradnam BSc RRD

Call 01284 388756

PERFECT PRESSING

IRONING PILING UP?

HELP NEEDED WITH SPRING CLEANING?

- Reliable Ironing, Laundering & Cleaning Service
- Collected & Delivered Promptly
- One Off, or on a Regular Basis

Please contact Allie on 07732 111802 or email

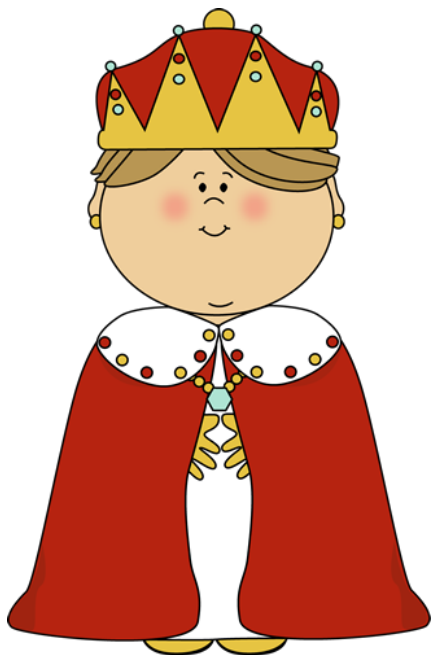
info@perfectpressing.co.uk

www.perfectpressing.co.uk

Children's Page May 2022

In June our Queen will have been Queen for 70 years and we will all be celebrating this. Part of Cockfield's celebrations will be a Big Lunch on Great Green on Sunday 5th June.

There will be a fancy Dress Parade with a goodie bag for the under 11's.



Dressing up is always fun!

You can choose to be a Queen, King, Princess or Prince and mum and dad can join in too.



HANDS UP NAIL STUDIO

Certified Nail Master with Diploma.

Only professional equipment. All the tools are cleaned, disinfected and surgically sterilised after each customer ensuring no cross infection

Manicure + gel polish £25 Pedicure + gel polish £28 Manicure + pedicure £45

Manicure includes filing, tag nails tidy, cuticle and dead skin removal.

Pedicure includes soak off bath, complete sole work, toenail work and cuticle removal.

Top Road, Rattlesden, Bury St Edmunds IP30 0SJ
Tel 07889 448186 / handsupmanicure@gmail.com

Bookings by appointment only



WATSONS

PLANTS

Watsons Plants is bursting with a beautiful array of perennial plants. The quality of our plants is second to none and we are confident they will be thriving in your garden for years to come.

We have a substantial choice of quality shrubs and garden plants at hugely competitive prices.

For the discerning gardener or enthusiastic beginner, we have something for everyone.

enquiries@watsonsplants.co.uk

watsonsplants.co.uk

Watsons Plants Ltd, Bury Road, Depden, Bury St Edmunds, Suffolk, IP29 4BU





Cockfield CEVCP School

Cockfield
Bury St Edmunds
Suffolk IP30 0LA

Tel & Fax 01284 828287
E-mail: admin@cockfield.suffolk.sch.uk
www.cockfieldprimaryschool.co.uk

Head Teacher: Mrs Trudie Harkin

We share, care and learn together

Dear Green Links readers,

Lime and Willow Class went to Banham Zoo recently, Lime Class to investigate whether the animals came from hot or cold places, what they eat and what animal group they belong to. They had a lovely day and the children were beautifully behaved. Here are some facts they learned:

"I liked the giraffes. They live in a hot place – Africa. They eat plants." – Amelia

"I liked the snow leopard. They are black and white to blend in with snow and they come from central Asia." – Seth

"My favourites were the tigers and the black howler monkeys. They were so loud! They are mammals." – Hugo

"We were surprised that the black footed penguin came from a hot place not a cold place." – Mia

"They came from South Africa." – Amelia

"I liked the leopards. They are scary and they live in a hot country. They eat meat." – Freddie

Willow class had a great time exploring the animals at the zoo too. They particularly noticed the animals that were endangered. During their workshop they learnt about exoskeleton and endoskeletons. They explored what clues they can get from skeletons and how our muscles move us. The children loved having the chance to hold a snake and stroke a hissing cockroach!

Gracie "I was surprised I was brave enough to hold the snake"

Alfee "I think they have exoskeletons to protect them like armour"

RJ "the monkey is using his tail to help him climb"

Oak class had their own special day in school linked with their learning on the Great Fire of London. Here are some of the things we have learned and some of the activities we did on our special day.

Albie – "When the Great Fire of London happened it was 1666 and at the worst bit of the fire it burned 100 houses in 1 hour."

Freddie – "the fire burned over 100,000 houses down in total".

Elliot – "we made houses out of wood and card."

Christos – "we made bread because in 1666 the fire started in a bakery."

Ella and Chloe – "The fire started in Pudding Lane in the early morning and lasted 5 days."

Phoebe – "only 6 people died in the fire."

Stanley – "we put flames on our model houses."

All of Oak - we had lots of FUN!

Best wishes,
Mrs Harkin

Live in harmony with one another; be sympathetic, love as brothers, be compassionate and humble.
1 Peter 3:8



Dear Friends,

The merry month of May is also the time when we think about Jesus ascending to heaven after his resurrection and various meetings with the disciples.

One of the disciples, Thomas, was not around when Jesus first appeared to his little band of followers, and so he did not believe that it was really Jesus.

‘Doubting Thomas’ as he is known wanted to have proof that Jesus was really alive. Then he finally sees Jesus, and says, ‘My Lord and my God’ – I expect he was very surprised, and overjoyed, to see his Lord again.

It is because we have witnessed, along with Thomas, the resurrection of Jesus that we have faith, as followers of Christ, that God is with us and for us.

Even though life is tough at the moment, what with the rise in the cost of living, the Ukrainian war and still coping with the Coronavirus, there is still cause for us to be thankful for all that we have. We are rich in many ways, in friendship, in a beautiful place to live and in enjoying many basic amenities that are denied to so many. We can really be thankful.

May I take this opportunity to say thank you to all those who supported the ‘pop up café’ which was held on 9th April in Church. It showed how much the people of Cockfield really care for others.

I hope that you will be able to come and join us in Church again for an Ascension Day service on Thursday 26 May at 12 noon, followed by a ‘bring and share’ lunch. We will be remembering Jesus’ ascension – as we prepare for the day of Pentecost, the coming of the Holy Spirit.

All are welcome to join the feast!

Yours in Christ,

Sharon

Revd Canon Sharon Potter

revsharon2@gmail.com, 01284-828599 or 07825 086063

Cockfield Benefice Services & Events – May 2022

Sunday 1 st May Easter 3	9.30am Morning Prayer – Stanningfield 10am Communion – Bradfield St George 10am Morning Prayer – Cockfield 6pm Celtic-style communion – Felsham
Sunday 8 th May Easter 4	8am Communion BCP – Cockfield 10am Morning Prayer CW – Gedding 10am Communion – Bradfield St Clare 6pm Healing Eucharist – Gt Whelnetham
Sunday 15 th May Easter 5	9.30am Communion – Stanningfield 10am Communion – Cockfield 10am Family@Church – Felsham 4pm Evening Prayer – Bradfield St Clare
Sunday 22 nd May Easter 6	9.30am Communion – Gt Whelnetham 10am Worshipping Together – Bradfield St George 10am Communion BCP – Gedding 3pm Holy Baptism – Bradfield St Clare
Thursday 26 th May Ascension Day	12 noon – Ascension Day Communion followed by bring and share lunch – Cockfield
Sunday 29 th May Easter 7	10am Benefice Communion – Bradfield St George

Please note these services may be subject to change – for up-to-date service times see the benefice website at www.cockfieldbenefice.com

A service of Celtic Morning Prayer is held every Tuesday at Cockfield at 9am

A prayer group meets via zoom every Wednesday at 2pm via zoom.

A service of Evening Prayer via zoom is held every Friday at 7pm.

For more details contact Rev Canon Sharon Potter at
revsharon2@gmail.com or phone 01284 828599 or 07825-086063



Complete Gas,
Oil & LpG
Installations.

T: 01787 247540

E: info@grdplumbingandheating.co.uk



Burnerserve Ltd

Maintenance, Repair
and Servicing
for Oil Fired Boilers
and AGA Cookers.

**Oftec Registered Engineers,
Local, Reliable, Professional.**

T: 01787 247540

E: info@burnerserve.co.uk

W: www.burnerserve.co.uk



Unit 5 Norman Way, Lavenham, Suffolk CO10 9PY



**Your local
tree surgeon
based in Bury
St. Edmunds**

Gorilla Tree Services is your local tree care company that you can trust for all kinds of arboricultural services. We are passionate about trees, their environment and the work we do with them.

Do you want a beautiful looking estate with healthy trees and plants?
Contact us today to discuss our services.

M: 07851 459 734 T: 01284 810 027
E: info@gorillatreeservices.co.uk
www.gorillatreeservices.co.uk



- Tree felling
- Tree surgery & stump removal
- Crown raise and reduction
- Crown thinning
- Pollarding & formative pruning
- Hedging & pruning
- Green waste removal
- Chipper hire with operator
- Storm / Wind damages trees
- Phone line clearing

KEVIN SEGGIE Electrical Services

30 Years Experience

NICEIC Part P reg'd ECA Member No Job too small

Domestic/ Commercial/ Industrial Work undertaken

Burglar Alarms fitted

Insurance testing

Free Estimates

Fully Guaranteed

Tel: 01284 830786 Mobile: 07768 108157

e-mail: kevinseggie@yahoo.com

KARLS COMPUTER SERVICES

**HAVING PROBLEMS WITH INSTALLING BROADBAND?
OR NETWORKING OR NEED A NEW COMPUTER/LAPTOP,
VIRUS PROBLEMS, 1 ON 1 LESSONS OR JUST AN UPGRADE
GIVE ME A CALL**

19 Hervey Road, B.S.E, IP33 2DN

TEL: 01284 700337 MOB: 07717 842913

www.karlscomputerservices.co.uk

EMAIL:-karl@karlscomputerservices.co.uk

GD Civils And Construction Ltd

At GD civils & construction Ltd we offer nothing but a 1st class service always making sure we meet our customers expectations.

GD CIVILS & CONSTRUCTION LTD has a proven track record of innovative designs, effective problem solving and attention to detail and our goal is to meet and exceed the expectations of every customer.

We take on all types of jobs from small domestic work to larger commercial projects, all carried out to the highest standards and at very competitive prices.

07582 287728

Email: george@gdcivils.co.uk
Stowmarket, Suffolk

Any Occasion
BOTTLE

Choose your favourite personalised Champagne gift from Say It With Champers!

Personalised Champagne for any occasion

Now Only **£40.74** with free delivery

CONGRATULATIONS
ON YOUR SPECIAL DAY
JENNY & THOMAS
YOU HAVE A GREAT DAY
BRUT

Anniversary, Birthday, Wedding
and many more available!

Order Online
sayitwithchampers.co.uk

Or Call
0333 772 1368



Kevin Hollings KITCHEN STUDIO

Unit 14 Lodge Works,
Stowmarket Road,
Old Newton,
IP14 4EE
01449 257160
info@kevinhollingskitchens.co.uk
www.kevinhollings.com



TOMLINSON GROUND CARE



JOHN DEERE

Horticultural & Garden Machinery Suppliers

Sales Service Parts Repairs Toys

Ride on mowers from £1799 inc vat

Walk behind petrol & battery mowers from £249 inc vat

Strimmers, hedge cutters, blowers, chainsaws etc

Garden tools, paddock & turf machinery

Service & repair all makes



Set in over 20 acres - Try before you buy

Established in Buxhall since 1991 - We hope to see you soon

Brettenham Road, Buxhall, Stowmarket IP14 3DL
01449 736060 www.tomlinsongroundcare.co.uk

AL-KO

EGO

ECHO

WEIBANG

Opening Hours

Monday	10.00 – 1.00
Tuesday	10.00 – 1.00 & 2.00 – 5.00
Thursday	10.00 – 1.00 & 2.00 – 5.00
Friday	10.00 – 1.00 & 2.00 – 5.00
Saturday	10.00 – 2.00
Sunday & Wednesday	CLOSED

**The Friends of Lavenham Library present
TRACY BORMAN**



14 May, 2.30pm, Lavenham Village Hall.

Tracy will give a talk on *Anne Boleyn and the Queens of England* at this fundraising event organised by the Friends of Lavenham Library, of which she is Patron. Afternoon tea will be served!

Tickets are priced at £10 and are available either in the library (cash only)

Or online: <https://lavenham-library-anneboleyn-with-tracy-borman.eventbrite.co.uk>

Top Time Group

Top Time is our sociable drop -in group for all adults. We hold fortnightly meetings from 2.30-4pm

3 May

Wellbeing Suffolk drop in chat

17 May

Author talk with Barbara Faulkner: Tales of Espionage, Piracy & Poison.
History of tea & its paraphernalia –
tea cosies, teaspoons, tea towels etc.

31 May

Queen's Platinum Jubilee tea party



Tot Rock – our weekly WordPlay session for preschool children and their carers
runs **every Thursday from 2pm-3pm.**

Please contact the library if you would like more details of how our sessions work – action songs and rhymes with time at the end for a chat and cup of tea while the children play.

Other Regular Activities

Friday	2.30-4.30pm	Indoor Kurling - group for adults
Saturday	11am-12pm	Lego Club – drop-in sessions for children of all ages

Contact Details

Lavenham Library, Lavenham Village Hall, Church St, Lavenham CO10 9QT

Tel No: 01787 247729

www.suffolklibraries.co.uk

Email: lavenham.library@suffolklibraries.co.uk

Suffolk Libraries HMRC charity number XT34476



FIELD COMPOST LTD

We'll Help Your Garden Grow



Composts
Manure
Soil Improvers
Soil
Bark
Woodchip
Mulch
Sand and Gravel
Lawn Care

www.fieldcompost.co.uk

sales@fieldcompost.co.uk
01440 966966



JPS Timber

Suppliers of:

- New and Reclaimed Sleepers
- Reclaimed Scaffold Boards
- Carcassing Timber
- Decking
- Post and Rail Fencing
- Oak Barrels and Planters
and more....

07970 559251

mail@jpstimber.co.uk

www.jpstimber.co.uk



Visions Safety

Vision Safety

Confused by the maze of Health and Safety legislation affecting your business? Call us now for experienced common sense advice from experienced health and safety consultants.

Who can:

- Assist with your Covid 19 compliance
- Provide pragmatic health and safety advice,
- Deliver expert health & safety training including e-learning,
- Provide competent construction health and safety advice in compliance with CDM2015,
- Conduct thorough health and safety audits,
- Take lead for accident investigation and support,
- Can support your all year round health & safety requirements,
- Provide assistance in obtaining SSIP accreditations,
- Will answer all your health & safety questions, Including help with tenders.
- Provide occupational health services,

Call Tony now on: 01284 828524

Email: Visionsafety@gmx.com



THORPE LANDSCAPING & GARDENING SERVICES

Contact Gavin on 07484 511 804

- To include a regular maintenance package for clients.
- Garden design.
- All soft landscaping, including turfing, seeding, planting etc.
- Hard landscaping, including Patios, walls, decking, driveways, fencing, all types of gates.
- Garden maintenance from hedge cutting, grass cutting, pruning, weeding.

PS

PAUL SAINSBURY

RESTORATION & BUILDING

**With over 20 years
experience in restoration
and all aspects of building**

**Free Estimates
Mobile 07785 582556
Email: enq@paul-sainsbury.co.uk**

A N GILLAM

Building

All aspects of roofing, chimney work, Lime plastering & rendering.
Chimney sweep

Free quotes - No job too small,

The Mouse House, Bradfield St Clare, IP30 0EL

Tel 01284 388508 Mob 07961 878564

S.E.P PAINTERS

For all your Painting & Decorating requirements
Fully professional service. Prompt, efficient, reliable.
No job too big or too small. Dulux Accredited
Competitive prices. Free Quotations. City & Guilds qualified.
Phone Andy on: 01787 375824
Mobile: 07748 800701 or 07802 613902
Email: andy@seppainters.co.uk
VISIT OUR WEB SITE ON www.seppainters.co.uk



Andy's Jet Force

- All drainage work undertaken, from block drains to new drains
- CCTV surveys
- High pressure water jetting services
- Patios and driveways cleaned
- Septic tanks and treatment plants emptied, serviced and installed

Andrew Waldock

jetforce@mail.com

T 01284 763952 M 07772 751645

www.andysjetforce.co.uk



**Your door-to-door laundry service
& wet cleaning with
Lagoon® Advanced Care
*The green cleaning revolution for
your clothes***

Opening Hours: Mon-Fri 8am-5pm

**Unit 12 Lady Lane Industrial Estate, Crockatt Road,
Hadleigh IP7 6BQ**

Tel: 01473 558 448

e-mail: sales@pressganglaundry.com

www.pressganglaundry.com





***All types of electrical work covered from
changing a light fitting to a complete re-wire.***

New circuits • Fuse board upgrades • House re-wires
Lighting design • New Kitchen wiring • Changing light fittings
Garden lighting • Alarm systems • Smoke alarms
Heating controls • Commercial electrics • PAT testing
Electrical condition testing and reporting • Certification • Fault finding
Emergency call outs • Free advice, quotations and estimates

Call Steve on 07961 576677 or 01284 828484
steveroberts101@outlook.com



OPEN!

The Horseshoes Inn

Traditional family owned & run Freehouse
Bury Road, Cockfield, Nr Lavenham IP30 OJB

Homemade hot & cold food

Sunday roast from £9.95

Children's menu £5.50

Open Tuesday evening to Sunday

Lunch & dinner

OPEN

Support your local Inn

CALL 01284 828177

West Suffolk CAMRA Award winning cask ales & ciders. Trip Advisor Certificate of Excellence Award



ARTHRITIS ACTION ONLINE GROUPS

JOIN US ON ZOOM TO MEET
OTHERS, SHARE HINTS AND
TIPS, AND LEARN ABOUT
SELF-MANAGEMENT
TECHNIQUES

REGISTER BY EMAIL
INFO@ARTHRITISACTION.ORG.UK
OR VISIT
WWW.ARTHRITISACTION.ORG.UK



Arthritis
ACTION



Cockfield Community Classifieds

For Sale

Wanted

Offered Free

Adverts in CC Classifieds' are free to insert please send your copy to the editor at
janne@twerbs.co.uk or 01284 828264 by the 15th of the month.

Green Links accepts no responsibility for the accuracy of any advert placed in Green Links and
buyers must satisfy themselves of the quality or value of any item prior to purchase or collection.

Out of fuel? Emergency oil delivery required? Tank leaking?

CARGATE engineering

Priory Barns, Drinkstone Road, Gedding, Bury St Edmunds, IP30 0QE

We help customers stay warm around the clock!

Cargate Engineering is a family-run Oftec-registered business specialising in supplying emergency fuel to homes and businesses in remote areas.

Since being established in 1996, Cargate Engineering has also developed experience and skills that allow us to offer a varied and comprehensive list of services, including everything from routine pump station maintenance to regularly scheduled septic tank cleaning and emergency call outs for issues such as overflowing septic tanks and drainage blockages. In addition, we produce high quality CAD drawings, are experts in root ingress removal, and are licensed hazardous waste carriers, ensuring we can meet all your needs. We take pride in our ability to offer a bespoke and friendly service with effective results that will last.

- Emergency Small Load Fuel Delivery and Boiler Relight Service
- Emergency Oil Tank Pump Down and Loan Tank Service
- Tank Replacement Installation Service by Experienced Oftec Engineers
- Contaminated Fuel Uplift Service Meeting Full ADR regulations
- Tank Internals and Bund Sludge Cleaning Service
- Oil Spill - Loss - Validation and Remediation Works
- Decommission of Redundant Fuel Tanks and Fuel Buy Back Scheme



Excellent services at competitive prices...

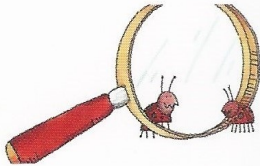
Bury St Edmunds:
01284 386 538

24/7 Emergency:
07974 495 362

Email:
info@cargateweb.co.uk

Website:
www.cargate-engineering.co.uk

ANGLIA PEST CONTROL



PEST CONTROL SERVICES since 1986

Call Will: 07919 356 155

Email:
iarwainbenadar77@gmail.com

Bridge Farm

Sudbury Road, Lavenham, CO10 9PJ

Tel: 01787 247522

From Race Horses to Rabbits...

.....we can help you take care of all your animal and poultry needs with our very competitive prices on feeds, supplements and varied types of bedding inc. Hay , Straw & Woodchips

**Why not come and visit our Wild Bird Centre?
There is so much to see!**

Also we sell Bottled Gas, Coal & Wood.
Dishwasher Salt, Mushroom Compost & Peat.

We can deliver locally
Open Monday - Saturday
9.00am - 5.00pm
Sunday
9.00am - 1.00pm



Congregational Church Corner

The Pharisees were a Jewish sect who called for strict compliance with the Law of Moses, as amplified by their own interpretation and oral traditions. As separatists from mainstream orthodoxy and as experts (as they saw themselves) in the Interpretation and application of the Law, they felt superior to all those around them and were intolerant of others, outside their own sect (see Luke 18: 11 – 13). But although they proposed high standards from others, they did not necessarily follow the strict letter of the Law themselves. This brought them into conflict with Jesus, who called them out for their hypocrisy and double standards which, in turn, did not endear Him to them.

We see an example of this in Matthew 12, where the Pharisees objected to the way in which Jesus and His disciples were conducting themselves on the Sabbath Day. Specifically, they objected to the disciples picking ears of corn to eat and Jesus healing those in need, all of which, they said, amounted to “work” and therefore broke the commandment to rest on the Sabbath Day.

The Mosaic Law, was given to mankind by God, partly for our own benefit and partly to define righteousness and sin and thereby show the standard required of us to live our lives in such a manner as to please a righteous God. But to fully observe the whole of God’s Law by our own efforts is not possible and for this reason the Law, shows us the need of a Saviour, whom God graciously gave to us in Jesus. The Pharisees failed to see this, however and so were busily encouraging those around them to comply with the Law, in order to work their way to into heaven which, the Bible tells us, is not possible (Ephesians 2:8 & 9).

Had the Pharisees not set themselves against Jesus and opposed Him, eventually plotting and stirring up others to see Him off by evil means (verse 14), they would have observed, during the 40 days that Jesus spent on earth, between His resurrection and ascension, not only a glorious fulfilment of the sign they asked Him for (verse 38), but also numerous other signs, proving by “infallible proofs” that Jesus had gained victory over death and the grave. And in doing so, they could have emulated the apostle Paul (a notable Pharisee himself), whose mission changed from persecuting the church under the Law to an ardent follower of Jesus, and preaching that salvation is by grace and grace alone (2 Timothy 1:9).

Bill Attwood

Enquiries Pastor Gordon Hold
01284 762663
ghold@gmail.com





Bury & District Pest Control

PEST CONTROL SPECIALISTS

Domestic, Farm and Commercial premises

No job too small - Contracts welcome

Effective control solutions for:

- **Insects**
- **Ants**
- **Moles**
- **Rabbits**
- **Flies**
- **Wasps**
- **Rodents**
- **Hornets**
- **Squirrels**
- **Birds etc...**

25yrs Experience of
infestation control



For a total Professional friendly local service

Call: 01284 220096

or

01359 232745

info@burystedmundspestcontrol.co.uk
www.burystedmundspestcontrol.co.uk

W.A WATTS
SINCE 2017
AUTOMOTIVE

M: 07825 744 974

T: 01284 828 325

SERVICING, CAMBELTS
AIR-CONDITIONING
MOTS & REPAIRS
DIAGNOSTICS
BRAKES, CLUTCHES
AND TYRES



MORRIS
LUBRICANTS



MILLERS OILS

Here for all your vehicle repairs
and maintenance needs!

*Now authorised stockists for
Millers and Morris Oils*

Find us at Unit 1, Cross Green,
Cockfield IP30 0LG

Contact Us Today!

Nicholson Executive Travel

Professional Chauffeur Service

Airports and Seaports

Business Travel

Any UK Destination

Accounts Welcomed

Tel: 01359 232648

07850 370465

roger.nicholson1964@gmail.com

Tania Jones Accountancy

friendly, professional, qualified
accountancy services

• Bookkeeping • Accounts • Tax Returns

t: 01359 241105 m: 07702 830001

e: tania@taniajones.co.uk

Announcements

Plant Sale and Coffee Morning Saturday 30 April 10am – 12noon

A coffee morning and plant sale in aid of funds for St Peter's Church will be held at **Orchard House, Chapel Road** on Saturday 30 April. There will be cakes and books on sale and plenty of coffee and chat. Do join us.

Ukraine Coffee and Cake Morning (9th April)

A great big thank you to all who baked, set up and ran the coffee morning. It was a great success and everyone enjoyed having time to chat. There was a really lovely atmosphere.

The financial giving was amazing!

We made £1,150 which included Gift Aid where possible. Canon Rev. Sharon was also given donations of £171 towards the event. That makes a total of £1,321.00

This response just shows how strongly we all feel for the people of Ukraine. All this money will be sent directly to the Ukraine Red Cross who are working on the ground in this terrible situation.

SC



Thank you Peter excellent timing -
St Peters with Ukrainian flag

Do you have an announcement you would like included here?

There is no charge for any announcements

Please contact the Editor Janne Cutting-Keyton on

01284 828264 or janne@twerbs.co.uk

Victor Keyton

Most makes of lawnmowers serviced,
sharpened, repaired

Ride On or Walk Behind

Pruners,
loppers,
shears etc.
sharpened

Collection/Delivery Available Free Estimates

01284 828264 or 07860 762424
Smithwood Green Cockfield



STEPHEN GREEN CARPETS

Quality Carpets & Vinyl's Supplied & Fitted

All Aspects taken care of Gripper - Glue - Underlay

Free Quotations

PHONE 07970 488851

EMAIL: SGREENCARP@AOL.CO.UK



Wavelength Aerials

Aerials • Satellite & TV Systems

Neat & Discreet Installation + Maintenance + Repair

For a free quote contact us on 01449 678 653 / 07828 085 294



Supply and wall-mounting
of Plasma & LCD TVs

info@wavelengthaerials.co.uk
www.wavelengthaerials.co.uk

DAVID FOURACRE

Your Local Painters & Decorators

Interior & Exterior

All Aspects of Work Undertaken from Surface Preparation/Repair
to Final High Quality Finish

For Advice & Free Quotation please call

01449 736283 Mobile: 07810 482311

or e-mail: yoursafehands@gmail.com

Professional Chimney Sweeping

Chimney Matters

Town and Country

Mobile : 07767 864127

Phone: 01284 789663

www.chimneymatters.co.uk



- Open fires, Wood burners swept and serviced for maximum efficiency.
- Certificates issued.
- Cows and Bird guards fitted.
- Fully insured.



Walnut Tree Designs

BESPOKE CURTAINS & BLINDS

Free design consultation in your own home- Complete made-to-measure service for all your soft furnishings requirements

**CUSHIONS - FABRICS - TRIMS-
POLES - UPHOLSTERY - PELMETS
- HEADBOARDS - VALENCES - VE-
NETIAN & ROLLER BLINDS**

*Call Viki, Angela or Terri Oxley to
arrange a free consultation*

Tel: 01284 828263

M: 078269 30011

e-mail: walnuttreedesigns@gmail.com



VANITY FUR
DOG GROOMING

LUXURY DOG GROOMING

From a full groom to a simple wash & dry

**ALL DOGS ARE PAMPERED AT
VANITY FUR!**

For more information contact **Charlotte**

01284 827089

www.vanity-fur-doggrooming.co.uk

Two A's, Hoggards Green, Stanningfield,
Bury St Edmunds, IP29 4RG



PAUL THE PLASTERER

All aspects of plastering work undertaken
No job too small



Fully qualified, Clean, Honest and reliable
Tradesman

15 Years experience

Call Paul – 01284 830887/ 07958 229559


Lawshall Village, Bury St Edmunds IP29 4PW

Free
estimates



== *W. A. Deacon* ==

Funeral Services



*An Independent Family Company,
dedicated to your service.
Established over fifty years.*

Golden Charter pre-paid arrangements available.
Private Chapel of Rest

Norman Way, High Street, Lavenham,
Suffolk, CO10 9PY.

24-Hour Telephone Service

01787 248282 & 248147

SEPTIC TANK EMPTYING AND DRAIN CLEANING

Tank emptying from £80

A K SERVICES

Ramsey Road Hadleigh

01473 822694
07891341645
Available 24/7

No callout charge for
emergencies

WINDOWS CLEANED AND GARDENS TIDIED

Call Craig for a free quote and introductory discount

01284 827110 / 07816 932878

brightgreen22@gmail.com

www.brightandgreen.co.uk

All work fully insured

BRIGHTGREEN

SUFFOLK REVIVE A DRIVE

Would you like your drive or patio restored to a newly laid finish.

Improve both the appearance and value of your property.

HIGH PERFORMANCE PRESSURE CLEANING

**PATHS, PATIOS, DRIVEWAYS, WALLS, GARDEN FURNITURE
DECKING, TENNIS COURTS, STABLES, SWIMMING POOLS and MORE
RE-POINTING, RE-SANDING AND SEALING ALSO AVAILABLE
TARMAC RE-DRESSED - REPAIRS UNDERTAKEN**

Phone for a FREE quotation Tel: MARK 01284 828294 or 07833 582636

Rothwell's
Carpet Cleaning

Carpet Cleaning & Stone Floor, Upholstery, Rugs

A few points that make us stand out,

Rothwell's has been in business since 1993

We're an honest local family firm.

Our large truck mounted machines mean
more cleaning & drying power
for the best results possible.

Members of both the NCCA and TACCA.

We will move the furniture.

100% satisfaction or it's FREE.

Call Oliver and Max Campbell
for expert help today.

01638 428 060

www.Rothwells.biz


greenmatters
GARDEN SERVICES LTD

Green Matters caters for domestic
and commercial clients offering:

- Grass Cutting
- Turf Laying
- Pruning
- Planting
- Garden Clearance
- Hedge Cutting
- Restoring and Maintaining
- Advice on all garden aspects
- Fully Insured
- Environment Agency Registered



☎ 01284 728044 📱 07941 840580

✉ greenmattersgardenservices@gmail.com

CJ Computer Services

Repairs - Upgrades - Custom Build Computers

Reasonable Charges - On Site Service - Fully Insured

Fully Qualified Technician - One 2 One Tuition - Lap-Top Sales

Wireless Broadband Set-up and Secured

Chris 01359 271772 or 07717 604180 chris@cjcomputerservices.biz

Ventanilla Blinds

Rollers Verticals Romans Pleated
Wooden & Metal Venetians Sheer Rollers
Conservatory blinds Blackout blinds
Perfect fit Pleated, Roller & Venetian
Awnings, Garden sails & Roller curtains

01787 313677 or 07966 371963

CHIMNEY SWEEP

ECO SWEEP

CHIMNEY SERVICES

- NEW POWER SWEEPING METHOD USED FOR A MORE THOROUGH CHIMNEY CLEAN THAN BRUSHES.
- INDUSTRIAL HEPA FILTERED VACUUM.
- FULLY INSURED.
- INSURANCE RECOGNIZED CERTIFICATES ISSUED.
- SPOTLESS, RELIABLE AND FRIENDLY SERVICE.
- ALL CHIMNEYS, WOODBURNERS, AGA, BOILER FLUES SWEPT.
- GUILD OF MASTER SWEEPS CERTIFICATED MEMBER.



TEL. 01359 232335

TIME FOR YOU™

DOMESTIC CLEANING

Are you tired of cleaning?



We have the
right cleaner
waiting
to help
you.

Regular - Weekly - Cleaner

01359 258991

Typically £14 per hour

www.timeforyousuffolk.co.uk



R W SERVICES

PROPERTY & GARDEN MAINTENANCE

All aspects of property maintenance covered.
Garden Design & Construction, Painting & Decorating
Roofing, Carpentry, Groundwork etc.

Free quotations Fully Insured References available

Rod Williams 01284 828965
Mobile 0775 2626261

Local tradesmen with integrity



Oil-fired boiler engineer

Mark Smith (OFTEC Registered)

Fully trained in both domestic and light commercial boilers.

All repairs, servicing and commissioning undertaken by
a friendly and efficient Cockfield based engineer.



**Registered
Business**

Competitive prices

Tel: 01284 827446



**Registered
Technician**



TARLING FENCING

FENCING AND GROUND CARE SPECIALISTS

Equestrian
Agricultural
Domestic
Gate installation
Landscaping
Groundcare

**Contact John for a free quotation:
01359 242496 or 07590 580512
tarlingfencing@outlook.com**



**We specialise in Precision and Civil Engineering
With over 30 years experience.**

We cover a wide range of manufacturing needs.
Including CNC Milling and Turning,
Structural Steels (CE Accredited),
Welding Fabrication and Installation.

For more about us please visit our website
www.grahamparishengineering.co.uk

Contact us on 01284 828118 or
Email parisheng@btconnect.com

Cockfield Contacts

February 2022 Web

CATEY Pre-School	Teresa Rutterford	catey@cockfield.org.uk
Cockfield Carpet Bowls Club	June Pettit	carpet.bowls@cockfield.org.uk
Cockfield Cemetery	Ralph Turner	828201
Cockfield Charties	Tony Box	charities@cockfield.org.uk
Cockfield Congregational Church	Pastor Gordon Hold	01284 762663
Cockfield Football Club	Joe Brinkley	football@cockfield.org.uk
Cockfield Netball Club	Lindsee Summers	netball@cockfield.org.uk
Cockfield Post Office	Barbara Turner	01284 828201
Cockfield Primary School	Trudie Harkin Headteacher	admin@cockfield.suffolk.sch.uk
Community Council Secretary	Janne Cutting-Keyton	community.council@cockfield.org.uk
Computer Circle, e-news	Neil Ashton	computer.circle@cockfield.org.uk
County Council - Local Member	Robert Lindsay	07738 264087
		robert.lindsay@suffolk.gov.uk
Dentist	Lavenham Dental Practice	01787 247058
	Paul Rolph & Associates	01787 247046
District Council	Babergh offices	0300 1234000
Local Member	Clive Arthey	01787 211316
		clive.urthery@baberggh.gov.uk
Local Member	Margaret Maybury	01787 464358
		Margaret.Maybury@baberggh.gov.uk
Doctors	Long Melford Practice	01787 378226
Earls Meador/Bruffs Line	Rodney Williams	earls.meadow@cockfield.org.uk
Footpath Warden	Mark Webster	footpaths@cockfield.org.uk
Friends of Cockfield School FOCSA	Mark Aston	fosca@cockfield.org.uk
Green Links - Village Magazine	Janne Cutting-Keyton	green.links@cockfield.org.uk
Mini - Bus Hire	Parish Council	minibus@cockfield.co.uk
Parish Council Clerk	Steve Ball	parish.council@cockfield.org.uk
Pavilion Administrator (C.C. Council)	Rodney Williams	pavilion@cockfield.org.uk
Pharmacy	The Lavenham Pharmacy	01787 247284
Stanningfield & District Agric. Club	David Simpson	stannag.club@cockfield.org.uk
St. Peters Church	Rev. Sharon Potter	01284 828599
Church Wardens	Norman Kelly/David Smith	church.warden@cockfield.org.uk
Village Hall - Bookings	June Pettit	village.hall@cockfield.org.uk
Secretary	Vera Shepherd	village.hall@cockfield.org.uk
Village Recorder	Brenda Dyer	recorder@cockfield.org.uk
Women's Institute Secretary	Suzanne Veal	wi@cockfield.org.uk



Bury Natural Health

Established for over 30 years

Treatments

- Acupuncture & Acupuncture Fertility
- Alexander Technique
- Bowen Technique
- Breastfeeding & Infant support
- Child Counselling
- Fertility Hypnotherapy
- Flower Essences
- Food Intolerance
- Herbal Medicine
- Homeopathy
- Hypnobirthing
- Hypnotherapy
- Iridology
- Shiatsu
- Life Coaching
- Massage
- Nature Connection & Forest Bathing
- Nutritional Therapy
- Osteoporosis Screening
- Pilates
- Psychotherapy & Counselling
- Reiki
- Reflexology
- Thermal Imaging
- Trauma & Abuse Therapy
- Wellness Coaching
- Independent Lactation Consultant

Find us here: Bury Natural Health Centre, Eagle House, Sudbury Road, Bury St Edmunds IP30 0UN

01284 760020

info@burynaturalhealth.co.uk