

The Monthly Village Magazine of Cockfield

# Green Links

February 2021



## Green Links Copy Deadline!

Please note all copy for the March issue must be  
with me by 15th February please

Janne Cutting-Keyton, Newholme, Smithwood Green,  
Cockfield. IP30 0JQ  
01284 828264 or [janne@twerbs.co.uk](mailto:janne@twerbs.co.uk)

### Would you like to Subscribe to Green Links

There are currently over 400  
subscribers to Green Links in  
Cockfield and the  
surrounding villages.

An annual subscription is  
£3.00 payable in August.

The magazine is  
delivered to your door by a  
team of local volunteer  
distributors.

Please contact  
01284 828264  
for further details

### Cockfield Village Hall

Available for hire at very  
reasonable rates

Please contact  
June Pettit  
for bookings or for  
further details  
[cockfield.org.uk/villagehall](http://cockfield.org.uk/villagehall)

**Please spread the  
word about our  
super village hall,  
huge car park  
and full facilities**

## GREEN LINKS ADVERTISING

To place an advertisement in Green Links  
or enquire about our rates please contact

Sue Harrison at  
[sue.harrison42@gmail.com](mailto:sue.harrison42@gmail.com)

# Green Links



The Monthly Village Magazine of Cockfield  
Edition 4– No 161 February 2021

Chairman and Distribution  
Editor  
Secretary  
Advertising Manager

David Simpson  
Janne Cutting-Keyton  
Morag Kelly  
Sue Harrison

Well here we are again - back to an online version only for the February edition of Green Links, I sincerely hope, as I am sure we all do, that we are on the path to a speedy and safe return to some sort of normality soon.

Being online only does have some advantages thought, rather than being limited to one or two colour pictures I can publish an array of super photos sent in over the past few weeks. My thanks to Peter, Carl, Kathryn, Kelvin, Monique and Paula for this months gallery. I have used up all my reserves so if you are out and about please capture some more pictures of seasonal interest and send them on in.

Unfortunately there will not be an organised Litter Pick in the village this year, because of the current restrictions, the safety guidelines for litter picking items which could be contaminated, the rules for the disposal of waste and the problems with shared use pickers and jackets. Everyone's safety must always be the prime consideration, maybe we can think of doing something later in the year when hopefully restrictions will have been eased.

Spring is nearly here, maybe by next month both the photos and the Country as a whole can reflect some signs of new beginnings, I am sure we could all do with that.

Janne

[www.cockfield.org.uk](http://www.cockfield.org.uk)

The Editor and Management Committee cannot be held responsible for the accuracy of articles or for any of the claims made by any advertiser and reserve the right to alter, shorten or refuse any items submitted for publication. All copyrights acknowledged.





## **Jeffreys Green, Cockfield - Affordable Housing**

**Completing March/April 2021**



I'm really pleased to report that despite a global pandemic, and two full national lockdowns, we are still on track to complete the new affordable homes at the end of March this year.

If you think that one of these flats or houses could be your new home, please read the following information to make sure you know what action you should take to be considered.

Priority will be given to people who have a connection to Cockfield and this is defined as having lived in Cockfield for at least two years, or having a close family member who has lived in Cockfield for at least two years, or people who work in Cockfield and have for at least two years. Having worked with the Parish Council for so many years to provide these local homes, we would really like to see as many people as possible with a close connection to Cockfield moving in.

Although we are currently under national lockdown restrictions, Government guidelines still allow house moving activities to take place. Orwell is still letting and selling affordable homes, with COVID Safe practices in place to protect our customers and staff.

## AFFORDABLE RENTED HOMES

There will be 12 affordable rented homes;

- 4 x 1 bedroom flats
- 2 x 2 bedroom flats
- 4 x 2 bedroom houses
- 2 x 3 bedroom houses

These homes will be owned and managed by Orwell Housing Association and rented on an affordable rent – this is a rent that is no more than 80% of the market rent of that property.



The homes will be allocated through the choice-based lettings system – Gateway to Homechoice. Anybody interested in renting one of the properties will need to be registered with Gateway to Homechoice and have an active application.

The properties will be advertised for bidding in the **middle of February** so your application will need to be registered and active before this time for you to be able to bid for a property. Please note that it can take some time from registering for your application to become live so please register as soon as possible to be considered for these homes.

More information on how to register or check your application is active can be found at [www.gatewaytohomechoice.org.uk](http://www.gatewaytohomechoice.org.uk)

Our Housing Officer, Emma Lally, is also available to help with any queries and can be contacted on 07843 328092.

## SHARED OWNERSHIP HOMES



We have four two-bedroom and two three-bedroom shared ownership homes at Jeffrey's Green, with prices at £112,500 for a 50% share of a two bed home or £125,000 for a 50% share of a three bed home. The size of share bought can more or less than 50%.

There are some eligibility criteria, for example you need to have a combined household income of less than £90,000 and you can't

own another home. Also, people with a connection to Cockfield will also be given priority should we have more applicants than properties.

We've had quite a lot of interest already so if you're not already in touch and you're interested in becoming a shared owner at Jeffreys Green please contact Sandra Scott or Karen Suddes, Orwell's Sales Team, on 07749 417399 or at [homesales@orwell-housing.co.uk](mailto:homesales@orwell-housing.co.uk) as soon as possible.

## SELF BUILD PLOTS

As part of the first phase of construction, Orwell has provided the services connections and main roads to serve five plots of land upon which individual homes can be built. The plots have outline planning permission for detached houses and will in the first instance be offered for sale by Suffolk County Council to local people who would like to have the exciting opportunity to build or procure their own home in the village. Sales will be conditional on the buyers living in the house themselves for a specified number of years and Community Infrastructure Levy (CIL) will not be payable if the houses remain occupied by the original buyer for a specified number of years. A further four larger self-build plots will be available in a later phase of the development.

Suffolk County Council have appointed Fenn Wright as marketing agents for the plots and bids will be assessed based on an agreed weighted system. For more information or to express an interest please contact Brian Prettyman at Suffolk County Council Corporate Property on 01473 264101 or by email at [brian.prettyman@suffolk.gov.uk](mailto:brian.prettyman@suffolk.gov.uk).

## FUTURE HOMES FOR SALE

The affordable homes at Jeffrey's Green are the first phase of a larger development and we are expecting to start building phase 2, the first of the market sale homes, this Spring. These are likely to be 11 new homes: a mixture of 2, 3 & 4 bed houses.

If you'd like to express an interest in buying a new home on phase 2, please provide your contact details to our sales team - Sandra Scott or Karen Suddes on 07749 417399 or at [homesales@orwell-housing.co.uk](mailto:homesales@orwell-housing.co.uk) – and we'll keep you updated with further information as it becomes available.

Thank you and stay safe

Dawn Edwards  
Development Manager  
Orwell Housing Association

# Garden Tips for February 2021

## Flowers & Grasses

- Herbaceous Perennials – Weather permitting take the opportunity to clear last year's dead flower heads and foliage. New growth should be visible at the base of the plant. You can also divide congested clumps to improve vigour and make new plants for free.
- Top dress established borders with proprietary fertiliser such as blood, fish and bone or well-rotted manure.
- Dahlias – Examine stored tubers. If they are shrivelling plunge into tepid water overnight. Dry and cut off any parts that show signs of rotting. Dust cuts with Flowers of Sulphur and place back in fresh vermiculite or dry peaty compost.



- Divide large clumps of bulbs such as snowdrops and winter aconites after flowering then re-plant to establish new colonies.
- Cut back deciduous grasses (e.g. Pennisetum, Miscanthus) which were left uncut over the winter. With regard to evergreen grasses (e.g. Carex, Stipa) you just need to remove the dead grass.
- Continue removing faded flowers from winter pansies and violas to prevent the plants setting seed. This will encourage the plants to produce fresh flushes of flower when the weather warms up.
- Trim back winter flowering heathers to prevent them growing leggy.



- Remove leaves with brown/blackish spots on Hellebores (Christmas rose) by doing this you will reveal the true beauty of these early winter flowers. Do not add the leaves to the compost heap as this will spread disease.

### Fruit and Vegetables

- Clear weeds from vegetable seed beds and fork in compost or well-rotted manure. Sow some vegetable seeds in greenhouse borders, cold frames or under cloches. Try sowing Aubergine, salad leaves, tomatoes, leeks, celeriac and onions.
- Broad beans can be sown outside providing the soil isn't frozen or waterlogged.
- Chit potato tubers – by arranging the tubers in shallow boxes or egg boxes with the eyes (young shoots) uppermost. Put in a light frost proof shed or room to encourage the tubers to sprout.



- Cut autumn fruiting raspberry canes down to the ground
- Prune back blackcurrant, redcurrants and gooseberries to a good open framework. Top dress fruit bushes with a slow release fertiliser (potassium-rich) to feed plants during the new growing season.
- Last chance to winter prune apple and pear trees while they are still dormant. You should aim to take out a bit of old wood each winter to stimulate new growth. Avoid the haircut approach and try to stagger the pruning cuts throughout the canopy. Your aim should be to create an open centre to the tree which will allow more light to ripen shoots and produce fruit. It will also allow good air movement which help prevent disease.
- Plant Rhubarb into enriched soil (well - rotted manure added) or split and divide established crowns.



## Trees, Shrubs & Climbers

- Prune winter flowering shrubs (Mahonia, Forsythia and winter flowering Jasmine) once they have finished flowering.
- Complete winter pruning of Wisteria by cutting summer side shoots to 2 or 3 buds.



- Prune hardy evergreen hedges and tidy deciduous hedges towards the end February and early March before birds start nesting.
- Prune back clematis which flower in summer (July onwards) to 12 inches from the ground. Do not prune Clematis Montana or any of the early flowering (Jan – May) Alpina, Armandii species. These should only be pruned immediately after they have finished flowering.
- Roses – Complete planting of new roses but not if the ground is wet and sticky or if there is frost or snow on the surface of the ground. If conditions unsuitable then just heel the plants into a nursery bed as a temporary measure.
- Sprinkle slow-release fertiliser around the base of roses and flowering shrubs.

## General Maintenance and planning

- Check your garden tools are clean and sharp. Check and service garden machinery so that you are fully prepared for the forthcoming season.
- Think about, plan and order any plug plants.



- Create a box with dividers for each month. Sort out seed packets and arrange in sowing date order.
- Clean empty pots with mild washing up liquid. Rinse thoroughly and allow to dry.
- Get on top of perennial weeds whilst easier to control.

At the time of writing we are about to go into another full lockdown. I really hope by the time you read this edition we all have more freedom. But whatever happens we still have our gardens, allotments, balconies or window boxes to enjoy.

Take care and stay safe.

Kate Ransom



Kitchen Fitting	Bathrooms	Plumbing	Minor Electrical
Worktops	Shower Rooms	- New Taps	- Plug Sockets
Sinks and Taps	Utility Rooms	- Outside Taps	- Light Switches
Tiling	Toilets	- New Radiators	- Light Fittings
Flat Pack Furniture Assembly		Interior Painting and Decorating	
Garage/Rubbish Clearance		Garden - Decking, Sheds and Bases	
Bespoke Shelving and Storage			

Getting your house ready for sale, or letting, we can do all those little jobs you have been putting off

**Telephone Paul on 01284 827402**

Mobile 07505 881034

DBS Checked ✓ Public Liability Insurance ✓ Clean and Tidy ✓  
 Prompt and Efficient ✓ Attention to Detail ✓ Pet Friendly ✓

## Home Adaptations Grants of up to £30,000



Home from  
Hospital



Disabled  
Facilities



Minor  
Adaptations



Terminal Illness  
/ End of Life



Living with  
Dementia



One Step Closer  
to Home

### **New service to support residents to live independently and safely in their homes**

Babergh District Council 'Independent Living Service' has been developed to help improve the quality of life of the districts' most vulnerable adults, young people and children.

The new service will offer advice and support where home adaptations, big or small, are needed to help residents live independently, safely and comfortably in their own homes, for as long as possible.

It will also assist residents with a disability, or those who may need adaptations to their home due to changes in their health, via the Disabled Facilities Grants (DFG) and the councils' Minor Adaptation Grants Scheme processes from application to completion of works.

Proposals to move the service in-house will allow the councils to ensure that the service is right for the residents across the district – with better control in the management of allocation of budgets and the processing of applications.

Cllr Jan Osborne Babergh District Council cabinet member for housing said: 'Bringing this vital service in-house will give us greater flexibility in supporting our residents. This new service will allow us to provide a more efficient and cost-effective service. Poor health is generally unplanned, and not something that you can prepare for. This new way of working will help us to directly support those with unplanned and long-term health issues or anyone needing additional support.

The Independent Living service will help us enable more of our residents to remain in their homes and live more independently. Bringing the service in-house will, in the long-term, help to reduce demands on Suffolk's care system and the NHS – cutting down on the time residents need to spend in hospital.'

Sometimes work needs to be carried out quickly and our teams will ensure that the processes in place allows residents to return to the comfort of their own home, and a safe and secure environment.

The new service will:

- Raise the quality of life, supporting residents to remain in their home independently and safely
- Improve the processing time for Disabled Facilities Grants (DFG) applications and associated works
- Increase the annual number of applications completed
- Reduced demand on the wider Suffolk care systems
- Help to identify the best option to meet the applicants' needs
- Provide help and support to complete DFG application forms
- Carry out home surveys
- Help source reputable local contractors
- Apply for planning permission and building control consent – if required

The Independent Living Service will work in partnership with Independent Living Suffolk to provide a high standard supportive network that will facilitate independence at home. In addition to offering signposting, financial and relocation assistance across the district, the service will enable each authority to tailor their provision to meet the changing needs of their communities.

Suffolk County Council will be the first point of contact – and residents needing advice, guidance, or support can start the process by using the contact details below.

Email: [ILS@Suffolk.gov.uk](mailto:ILS@Suffolk.gov.uk)

Call: [0800 121 7711](tel:08001217711) for an assessment by therapy staff.

Once an assessment has been carried out by Suffolk County Council therapy staff, a recommendation will be made on the home adaptations and support needed.



**Grants  
for home  
adaptations**

[www.babergh.gov.uk](http://www.babergh.gov.uk)  
[www.midsuffolk.gov.uk](http://www.midsuffolk.gov.uk)

**Grants available  
between  
£1,000 - £30,000**

For more information  
Email: [ILS@suffolk.gov.uk](mailto:ILS@suffolk.gov.uk)  
Call 0800 121 7711

## Cockfield SpeedQuiz Live, December 22nd



Our second SpeedQuiz Live took place on December 22<sup>nd</sup>. Building on the success of the first quiz in November, we had 15 teams this time. The format was the same virtual quiz and I included a few festive questions.

As it was the festive season we decided that this time the prize would be donated to one of our local charities and that the winning team would be invited to choose which one.

Congratulations go to Team Smithereens, sometimes known as the Smithers family, who were worthy winners. They asked for the prize to be donated to St Peter's Church.

Thank you to all those who took part, we hope to see even more teams enter next time.

Please note the next 2 SpeedQuizzes are scheduled for Saturday January 30<sup>th</sup> and Saturday February 27<sup>th</sup>.

**Neil Ashton**  
*Quizmaster*

Cockfield Community Council

*Please note the dates of the next 2*

# Speed Quiz!

**Saturday 30<sup>th</sup> January**

**Saturday 27<sup>th</sup> February Via Zoom**

**Set up from 7 pm, Quiz Starts 7.30**

**Enter as individuals or family teams**

**Free to enter**

You will need a laptop, desktop or tablet for the Zoom session, plus one smart device per team – phone or tablet – which will be your keypad to enter answers.

Additional information is published on [www.cockfield.org.uk](http://www.cockfield.org.uk) and full instructions will be issued to participants.

**It's great fun, not technical, typing skills not required**

**Have a go!!**

**To register your interest, or to ask any questions please contact Neil on 07900 880888 or email**

**[quiz@cockfield.org.uk](mailto:quiz@cockfield.org.uk)**

## Self-isolation support payments for low-income earners in Babergh



Residents on low-incomes and unable to work because they have been asked to self-isolate by NHS Test and Trace, can now claim a £500 payment to compensate for loss of earnings.

As part of a nationwide Government scheme, residents in Babergh who are on low incomes and are unable to work because they have been told by NHS Test and Trace that they have to self-isolate can now apply for a lump sum payment from their local councils. Money will be paid into their accounts within days of their applications being verified, to relieve immediate financial hardship.

People who receive notification from NHS Test and Trace to self-isolate because they have been in contact with someone who has tested positive for Covid-19, will be entitled to a £500 support payment if they meet all of the following requirements:

- They comply with the NHS Test and Trace notification to self-isolate
- are employed or self-employed
- are unable to work from home and will lose income as a result

**AND are in receipt of one of the following benefits:**

Universal Credit - Working Tax Credit - Income-based Employment and Support Allowance - Income-based Job Seeker's Allowance  
Income Support - Housing Benefit - Pension Credit

Discretionary payments may also be available in exceptional circumstances to individuals who meet the main qualifying criteria (i.e. low-income and unable to work because they are self-isolating) but are not in receipt of qualifying benefits and are facing severe financial hardship.

The scheme is being administered on behalf of the local authority by the Shared Revenue Partnership - with a fast and simple application form now available on the councils' websites together with information about how to easily provide evidence required and further details about the scheme.

To apply and find out more:

Babergh residents: [www.babergh.gov.uk/benefits/coronavirus-money-and-benefits-advice/](http://www.babergh.gov.uk/benefits/coronavirus-money-and-benefits-advice/)

Claims must be made within 14 days of a period of self-isolation ending. Residents are also reminded of the launch of the Suffolk Support and Advice Service earlier this month to help people access information or support relating to debt, benefits, housing or employment.

Citizens Advice Suffolk Alliance, which includes the eight Citizens Advice Bureaus across Suffolk, and Anglia Care Trust and Ipswich Housing Action Group are delivering advice and support to people through a single phone line.

The phoneline is funded by Suffolk Public Sector Leaders and has been developed by Suffolk-wide partners on the Collaborative Communities Covid-19 Board, which is part of the Suffolk Resilience Forum.

People can contact the Suffolk Support and Advice Service on **0800 068 3131** between 9am to 5pm Monday to Friday or go to: <https://www.suffolk.gov.uk/coronavirus-covid-19/suffolk-advice-and-support-service/>



# Sudbury & District Citizens Advice

**citizens  
advice**

**We offer a telephone  
advice service from  
Mon – Thurs  
10am – 1pm**



**Tel: 01787 321400, 0300 330 1151 or  
03444 111 444**

**Or email [advice@sudburycab.org.uk](mailto:advice@sudburycab.org.uk)  
website: [www.sudburycab.org.uk](http://www.sudburycab.org.uk)  
[www.citizensadvice.org.uk](http://www.citizensadvice.org.uk)**

**We're here to help you – whoever you are, whatever the problem**

**Benefits - Debt - Consumer - Housing - Employment  
Education - Health - Legal - Immigration - Relationships**

**We provide free independent, confidential and impartial advice to  
everyone on their rights and responsibilities.**





**13.12.2020 at 7.46am**

# Children's Page

## February

February in Lockdown BORING!

Lets see if we can find a Boredom Buster or two...

Always ask parents/carers permission first!

### Sock toss

Roll socks into balls and position two teams at opposite ends of the room. Try to throw socks into the 'goals' of each other's team. The winner is the one who gets the most socks to the other end.

### Hide and seek

This traditional game is fun especially outdoors but when you cant go out try using a toy to hide, much easier in a small space.



### Treasure hunt

Draw pictures on small bits of paper and hide them around the house to make a trail to follow. Leave something at the end so they know they have found the treasure.

### Buttons

My grandma always had a button box which I could sort, or count or thread - ask if there is one in the house you could play with.

**Be an animal** for a while and see if anyone can guess which animal you are - to make it super hard you could act out the movements or facial expressions without making a noise.



# Weather and 'rainfall' recordings and observations in Cockfield during 2020.

(Information supplied as purely as a guide and hopefully of interest).

Notable significant rainfall variations seen throughout the year.

## Highest monthly rainfall totals:

February - 4.13ins or 105mm

June - 5.93ins or 151mm

August - 5.72ins or 145mm

October - 6.01ins or 153mm

December - 5.69ins or 145mm

## Lowest recordings:

March - .38ins or 35mm

April - 1.10ins or 28mm

May - 0.40ins or 10mm

September - 1.56ins or 40mm

**A very dry Spring.** Take out February and the remaining 4 months up to and including May saw just 13% of the annual rainfall representing 33% of the year. (5.40ins against 33.88ins for the remaining 8 months).

**The wettest months** alternated from June onwards e.g. months 6, 8, 10 & 12. The four year annual average rainfall up to 2018 was 25.24ins or 641mm.

**Taking a six year annual average**, this has now increased to 28.66ins or 728mm.

## Month by month observations:

### January

Started grey and murky with some mild days interspersed with the odd cooler days. No significant frost until 18th that gave us 2 days with clear blue sky and sunshine. Return to overcast and grey conditions towards latter part of the month.

### February

First part of month relatively dry apart from 9th 0.5ins or 12.5mm of rain.

2nd half saw rain falling almost every day with nearly 80% of the months rain recorded.

A windy, disturbed month with incoming Atlantic storms, namely Ciara and Dennis battering the West of the Country but less impact here in Suffolk. The month ended on a chilly note with return to frost on 26th (last one on the 6th) then snow on 27th, sufficient to provide a covering, this disappearing after lunchtime.

### March

Rainfall below average with most of it falling in the first half with 1.3ins or 32mm and just 0.1ins or 3mm in the last half.

Temperature wise, month started mostly mild with only a few light frosts until 19th then cool easterly breeze and frosts, giving clear blue skies until 28th. Sleet showers on 29th.

Our first recorded sound of the Chiffchaff was on 17th, earlier than previous years.

## **April**

The dry weather continues with the 2nd driest month of the year. Rain recorded on just 5 days those being 13th, 20th, 28th, 29th and 30th.

Month provided spells of cool breezes, mostly clear blue skies and periods of unseasonable warmth. Summer appeared early from 5th to 12th and for a shorter period from the 22nd. A winter reminder came by way of frosts on 15th, 16th and 26th and the month ended cooler and unsettled.

## **May**

Unsettled weather for Day 1 and 2, the only days when measurable rainfall was recorded. Just 0.4mm or 10mm for the month.

Mostly a month to enjoy sunshine and warm conditions but the sting in the tail was provided again by days of a cool easterly breeze; but those were in the minority. Frosts very early on the mornings 14th and 15th. The month ended on a high with warmth and sunshine.

## **June**

Started warm becoming unsettled from 3rd to 12th then warm and humid until 20th. Very warm until the last two days of the month when grey overcast conditions persisted.

Only 9 days of recorded rainfall but the vast majority it fell on 17th. A total of 3.27ins or 83mm for the whole day but 2.4ins or 61mm was measured after a biblical like storm occurred between [1530hrs - 1700hrs](#) destroying the vegetable garden in the process.

## **July**

Rainfall evenly spread out over the month.

Overall the month is a mix of warm sunshine and short heavy isolated showers and especially around the 5th, very windy. The end of the month is sunny and very warm, with 31st the hottest day of the year so far.

## **August**

Mostly warm and sunny, some cloudier days with increasing humidity leading to localised thunderstorms, especially around the 16th & 17th.

Windy at times, 21st and then with Storm Francis on 25th that then brings in a period of heavy rain on 27th (1in or 25mm) and more rain for the next 2 days giving us a typical unsettled Bank Holiday weekend.

## **September**

Beginning of the month mostly warm and sunny then gently deteriorating towards the latter part when it becomes cooler and more unsettled but before this

we experience pleasant warm and sunny days. The month end experiences more windy days, occasional bright sunny periods and spells of rain.

**October**

Wettest month of the year and probably one for record books.

A month for wet weather gear as rain fell on approx. 23 days and on 6 days at least 0.4in or 10mm was measured. Very little sunshine recorded, the best days for being mild with sunshine being 20th & 22nd. Glad to see the back of October.

**November**

The rain relents at last but it is predominantly overcast and grey with mainly sunny, mild days only on 4th, 5th, 6th, 12th and 22nd. Most of the rainfall occurred between 10th and 20th.

The first frost of the impending winter came on 4th with further frosts on 20th, 23rd and 27th.

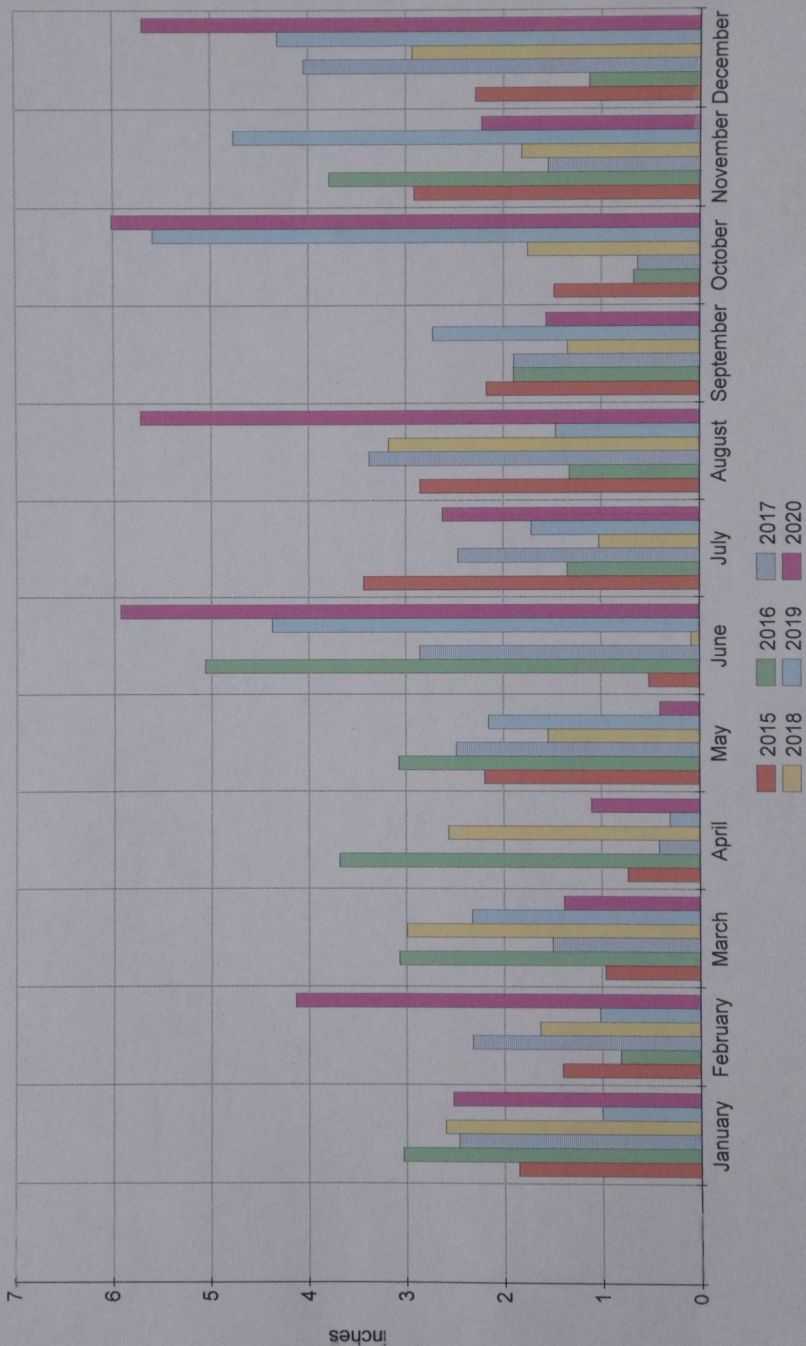
**December**

Another very wet month. 1.4ins or 36mm on 3rd then more persistent rain fell from 9th to 27th. Winter arrives with frost, fog, grey skies, mist and murk. Some beautiful and dramatic sunrises but short lived sunshine with only a handful of clear sunny days.

Paul Heather

Cockfield rainfall 2015 - 2019					(inches)	
	2015	2016	2017	2018	2019	2020
January	1.85	3.03	2.46	2.6	1.00	2.52
February	1.40	0.81	2.32	1.63	1.02	4.13
March	0.96	3.07	1.50	2.99	2.32	1.38
April	0.73	3.68	0.41	2.56	0.30	1.10
May	2.19	3.07	2.48	1.54	2.15	0.40
June	0.51	5.06	2.85	0.08	4.37	5.93
July	3.43	1.34	2.46	1.02	1.71	2.62
August	2.85	1.32	3.37	3.17	1.46	5.72
September	2.17	1.89	1.89	1.34	2.72	1.56
October	1.48	0.67	0.63	1.75	5.59	6.01
November	2.91	3.78	1.54	1.81	4.76	2.22
December	2.28	1.12	4.04	2.93	4.31	5.69
Month total	22.76	28.84	25.95	23.42	31.71	39.28

# Cockfield Rainfall 2015 - 2020



# Census 2021

## will provide a snapshot of modern society

Households across Cockfield will soon be asked to take part in Census 2021.

The census is a once-in-a-decade survey that gives us the most accurate estimate of all the people and households in England and Wales. It has been carried out every decade since 1801, with the exception of 1941.

It will be the first run predominantly online, with households receiving a letter with a unique access code, allowing them to complete the questionnaire on their computers, phones or tablets.

“A successful census will ensure everyone from local government to charities can put services and funding in the places where they are most needed,” Iain Bell, deputy national statistician at the Office for National Statistics, said.

“This could mean things like doctors’ surgeries, schools and new transport routes. That’s why it is so important everyone takes part and we have made it easier for people to do so online on any device, with help and paper questionnaires for those that need them.”

Census day will be on March 21, but households across the country will receive letters with online codes allowing them to take part from early March.

The census will include questions about your sex, age, work, health, education, household size and ethnicity. And, for the first time, there will be a question asking people whether they have served in the armed forces, as well as voluntary questions for those aged 16 and over on sexual orientation and gender identity.

Results will be available within 12 months, although personal records will be locked away for 100 years, kept safe for future generations.

For more information, visit [census.gov.uk](https://census.gov.uk).

The logo for the 2021 census, featuring the word 'census' in a lowercase, rounded, purple font, with '2021' below it in a larger, similar font.





As in previous years, the appeal will support older and vulnerable people in Suffolk to stay warm in their homes.

We will also ask individuals about their health and wellbeing, living conditions and isolation, and connect them to people that can help.



## IF YOU NEED SUPPORT CONTACT

**The Surviving  
Winter Helpline  
01473 219770**



This year, we are expecting more people to need our help than ever before, so we are merging the Surviving Winter Appeal with the central Rebuilding Local Lives initiative that we have been running since the start of the pandemic. We hope that this action will deliver a much louder and easily understood central message to increase local giving and ensure that every vulnerable person in our 'Caring County' is supported to 'Stay Warm, Stay Well and Stay Connected'.

As the Coronavirus pandemic continues to have a profound impact on all our lives, we perhaps have a greater empathy than ever before of what it is to feel vulnerable, lonely or isolated.

At this time of year, for the team at the Foundation and all our annual Surviving Winter Appeal partners and existing donors, thoughts inevitably turn to the coming months and the impact that shorter days and colder nights may have on the health and wellbeing, particularly of vulnerable older people and others experiencing deprivation or serious issues affecting their physical or mental health.

With winter almost upon us, Suffolk is bracing itself for a dramatic increase in need. Last year our annual Surviving Winter Appeal raised enough money to heat over 1000 homes and connected many hundreds of people to other services to help tackle isolation, address physical and mental health challenges, improve poor living conditions, solve debt problems and assist with access to services to help them stay safe and well.



## Great Green Adventure Playground

I am sure you will have noticed that the new adventure playground is taking shape on the Green. Unfortunately, our contractor has been impacted by Covid restrictions and difficulties with his scheduling and resources, therefore the work has taken far longer than we originally anticipated. However, progress is being made and will soon be at a conclusion, although the situation remains fluid with the lockdown. Nevertheless, when completed hopefully in early December, the equipment will be available for use. We continue to liaise with the contractor and will monitor government directives that influence this.

We are not yet sure how we can facilitate an official opening event to celebrate the efforts put into securing funding, getting the project underway and finished. I would like to thank all those involved in what has turned out to be a challenging period.

The Parish Council does remind users that at the time of writing; From Thursday 5 November national COVID-19 restrictions apply to England, although this allows that outdoor playgrounds can remain open.

In general, you must not meet with another person socially or undertake any activities with another person. However, you can exercise or meet in a public outdoor space with people you live with, your support bubble (or as part of a childcare bubble), or with one other person.

You should minimise time spent outside your home. When around other people, stay 2 metres apart from anyone not in your household - meaning the people you live with - or your support bubble. Where this is not possible, stay 1 metre apart with extra precautions (e.g. wearing a face covering).

The Parish Council are not able to micromanage, provide direct supervision at the playground, or implement a continuous cleaning regime. We ask all users to consider their own wellbeing and that of others during the use of the equipment and note following:

We remind users, parents, guardians and carers of the need for social distancing.

We strongly recommend the wearing of face coverings. Current government guidance states that face coverings should not be used by children under the age of 3 or those who may find it difficult to manage them correctly. Parents should be aware that wearing a face covering in a playground setting could pose an additional safety risk and should use their judgement on whether their children wear a face covering.

Users are to dispose of used face coverings by taking them home for disposal.

Cleaning of equipment by users, parents, guardians and carers, particularly where there are clear touch points such as swing rockers and see-saws will improve the safety of all users.

We encourage parents to bring hand sanitiser gel or wipes to clean their children's hands.

We encourage hand hygiene with including washing/sanitising hands more often than usual, for 20 seconds using soap and water or approved gel and foam sanitiser, particularly at the beginning and end of play.

We remind the children not to put their mouths on equipment or their hands in their mouths and not to touch their faces.

The consumption of food or drink on play equipment or in the playground area is banned due to the risk associated with transmission.

We hope circumstances improve and that everyone can enjoy the new facilities we have been able to provide to the village and local community.

Derek Southgate - Chairman Cockfield Parish Council

# Cockfield Parish Council

## Notes



### **Summary report of the Extraordinary Parish Council meeting held on 17 December 2020 held by Skype Video Conference**

The Parish Council do not usually hold meetings during December. However, a number of urgent items of business had emerged that had closure deadlines. This particularly related to planning consultation matters.

A number of members of the public joined the meeting principally surrounding application DC/20/03116. Given the interest the Chairman (within his discretion) allowed representations to be made beyond the period determined in the standing orders.

#### **Planning: Applications Received for consultation:**

**DC/20/05222:** Application under S73a for removal or variation of conditions relating to approved DC/19/03063 dated 12/11/2019 Town and Country Plan Act 1990. (Demolition of existing building. Erection of 9no dwellings and creation of a new vehicular access) (Conditions 2, 3, 5, 6, 8, 9, 10, 12, 13, 14, 16, 17 and 18.) - Changes to the design and layout of the scheme and construction management. The Garage, Great Green, Cockfield, Bury St Edmunds Suffolk IP30 0HJ. **The Parish Council Supports this Application with conditions.**

**DC/20/03116:** Planning Application - Erection of new workshop building with the existing access to the site from the A1141 upgraded. Location: Land to The East Of, Sudbury Road, Cockfield, Bury St Edmunds Suffolk IP30 0LN. Reason(s) for re-consultation: Additional Supporting Statement received 25.09.20 & Noise Impact Assessment received 04.12.20. **The Parish Council Objects to this Application. (The detailed response is visible on the BMSDC planning portal)**

**DC/20/05381:** Planning Application - Conversion and extension of existing agricultural building to provide 1no. single storey dwelling (with associated demolition) Location: Colchester Green Farm, Colchester Green, Cockfield, Bury St Edmunds Suffolk IP30 0HG. **The Parish Council Supports this Application. (The detailed response is visible on the BMSDC planning portal)**

## Decisions Received:



**DC/20/04361:** Full Planning Application - Change of use of part of existing agricultural building to self-storage facility. New Barn Farm, Lavenham Road, Cockfield, Bury St Edmunds Suffolk IP30 0HX. **Decision: Planning Permission has been Granted.**

**DC/20/04440:** Application for removal or variation of a condition following grant of planning permission. Town and Country Planning Act 1990. Planning (Listed Buildings and Conservation Areas) Act 1990 for DC/18/00474 to vary Condition 1 (Approved plans) to facilitate replacement of the approved layout plan with the submitted phasing plan drawing 908/73. Land at Bury Road, Cross Green, Cockfield, Bury St Edmunds Suffolk IP30 0LG. **Decision: Planning Permission has been Granted.**

## Adventure Playground Additional Works:

As the existing rubber matting had further deteriorated. It was agreed that an order be placed with Action Play & Leisure Ltd, for the supply & installation of Safergrass cellular rubber matting under one pair of swings.

The contractor had met his obligation to grass seed the residual area around the works. However, with the level of usage, to expedite a speedier solution it was agreed that Cllr Brinkley be instructed to purchase 200m<sup>2</sup> of turf to be laid at the Children's Playground, Great Green. Cllr Brinkley volunteered to lay the turf, assisted by Cllrs Morley and Golding.

It was noted that the Parish Council have publicly advised the village via articles in several editions of Green Links, of the opening of the new Children's Playground facilities and the Government's Covid Advice.

## CIL Working Group:

The Working Group's meeting on site to progress the feasibility of a new Bus Shelter to replace the existing shelter opposite MacKenzie Place, had identified this was a more demanding task. Replacing only the shelter was not a long-term solution and the overall area of hard standing, kerbing and access needs to be significantly improved.

Cllr Morley is seeking a budget price from a contractor experienced in this type of work to ensure latest legislation can be met.

Cllr Morley advised that he is obtaining a quotation to resurface the parking bays at the Great Green and install the replacement telegraph pole edging, acquired by Cllr Brinkley.



The Parish Council may be contacted through the Clerk, Steve Ball by email at [parish.council@cockfield.org.uk](mailto:parish.council@cockfield.org.uk) or 01284 8258987

Next Meeting - The next Ordinary Meeting of the Council will be held on Thursday 25th February 2021

## Tania Jones Accountancy

friendly, professional, qualified  
accountancy services

• **Bookkeeping** • **Accounts** • **Tax Returns**

t: 01359 241105 m: 07702 830001

e: [tania@taniajones.co.uk](mailto:tania@taniajones.co.uk)

# KH

## Kevin Hollings KITCHEN STUDIO

Unit 14 Lodge Works,  
Stowmarket Road,  
Old Newton,  
IP14 4EE  
01449 257160

[info@kevinhollingskitchens.co.uk](mailto:info@kevinhollingskitchens.co.uk)

[www.kevinhollings.com](http://www.kevinhollings.com)





#SUFFOLKSAYSTHANKS

## KARLS COMPUTER SERVICES

HAVING PROBLEMS WITH INSTALLING BROADBAND?  
OR NETWORKING OR NEED A NEW COMPUTER/LAPTOP,  
VIRUS PROBLEMS,  
1 ON 1 LESSONS  
OR JUST AN UPGRADE

GIVE ME A CALL

19 Hervey Road, B.S.E, IP33 2DN

TEL: 01284 700337 MOB: 07717 842913

[www.karlscomputerservices.co.uk](http://www.karlscomputerservices.co.uk)

EMAIL:-karl@karlscomputerservices.co.uk

## Advice Page

**I've fallen behind on my bills and the debts are building up. I don't know where to start.**

You've already taken a great first step by asking for help, and it's important to know you don't need to face this alone. You can contact Sudbury & District Citizens Advice for help.

In the meantime, here are four steps you can take to get started:

1. **Work out how much you owe** - Make a list of whom you owe money to and add up how much you need to pay each month. If you don't have your most recent statements, contact your creditor to find out what you owe. Some creditors will have special arrangements for people with Covid-related arrears.
2. **Prioritise your debts** - Your rent or mortgage, energy and council tax are called priority debts as there can be serious consequences if you don't pay them. Separate these and work out how much you owe. Again, you can ask the companies or council what support might be available during the pandemic.

**Work out how much you can pay** - Create a budget by adding up your essential living costs, such as food and housing, and taking these away from your income. The Citizens Advice budgeting tool on our website, [www.citizensadvice.org.uk](http://www.citizensadvice.org.uk) can help. Any money you have spare can be put towards your debts, starting with the priority debts first. If you have any money left after paying priority debts, but not enough to make your usual payments on other debts, consider getting advice on the best way for you to start getting on top of them. Or contact your creditors and offer them what you can afford to pay.

**If you can't pay your debts** - If you've got little or no money spare to pay your priority debts seek advice from Citizens Advice straight away. If you're struggling to pay for basics like food, seek help immediately to see what support might be available to you. If you can't pay off other debts, such as credit cards and loans, it would also be worth contacting your nearest Citizens Advice.

We know it can feel very daunting to deal with debt, but having a plan really helps and our team will be here to help you each step of the way.

*\*Please note we are no longer seeing clients face to face until further notice\**

We are providing advice by telephone and email, Monday – Thursday, 10am – 1pm. Please phone 01787 321400 if you need advice and leave a message and someone will call you back when available. We will attempt three times to call you back, so please expect a call from a withheld number.

You can also ring our Advice line on 0800 144 88 48 or 0300 330 1151.

Alternatively, contact us via email at [advice@sudburycab.org.uk](mailto:advice@sudburycab.org.uk) or by using the contact facility on our website [www.sudburycab.org.uk](http://www.sudburycab.org.uk).



Government  
Counter Fraud  
Function

GOV.UK/coronavirus



Counter Fraud Authority

# COVID-19: VACCINE FRAUD

Criminals are using the COVID-19 vaccine as a way to target the public by tricking them to hand over cash or financial details. They are sending convincing-looking text messages letting people know they are eligible for the vaccine or phoning people directly pretending to be from the NHS, or local pharmacy.



## PEOPLE ARE WARNED TO BE ALERT TO THESE SCAMS:

The **NHS** will:

- ✗ **NEVER** ask for payment - the vaccine is free
- ✗ **NEVER** ask for your bank details
- ✗ **NEVER** arrive unannounced at your home to administer the vaccine
- ✗ **NEVER** ask you to prove your identity by sending copies of personal documents such as your passport

## TOP 4 VACCINE SCAMS



### TEXT MESSAGES

People are asked to press a number on their keypad or to send a text message to confirm they wish to receive the vaccine, doing so is likely to result in a charge being applied to their phone bill and fraudsters collecting personal information to use again.



### PHONE CALLS

Victims receive a phone call from a fake caller offering the vaccine for a fee or asking for bank details



### WEBSITES

Fake URL links to convincing-looking NHS vaccine booking forms, these look like official NHS forms and may contain some personal information already, at the end of the form it asks for their bank details.



### IN PERSON

Fraudsters are calling unannounced at the homes of victims by pretending to be from the NHS to administer the vaccine there and then, in exchange for a cash payment.



Government  
Counter Fraud  
Function

GOV.UK/coronavirus



Counter Fraud Authority

## LIKE OTHER SCAMS, THE SAME ADVICE APPLIES:

1

**Challenge** - Could it be fake? It's ok to reject, refuse or ignore any requests that don't feel right. Check **GOV.UK** to ensure it's genuine.

2

Do **not respond** to text messages that try to get you to send money, or important personal information such as bank details or passwords.

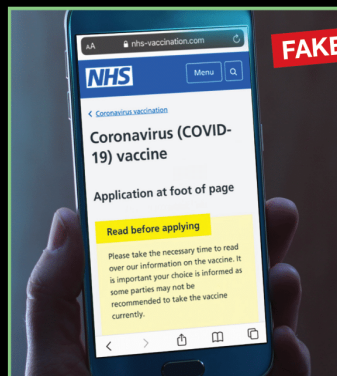
3

Use **official** government websites and refer to 'Contact Us' sections of websites to access information and service.

4

**Challenge** unannounced callers to your home, NHS visits if necessary will be agreed with you directly or via carers, they will never turn up unannounced.

## EXAMPLES OF SCAMS



A

NHS: We have identified that your are eligible to apply for your vaccine. For more information and to apply, follow here : [uk-application-form.com](http://uk-application-form.com)

FAKE

11:18

## FURTHER GUIDANCE AND SUPPORT

### Public Sector Organisations:

The Cabinet Office has formed a COVID-19 Fraud Response Team to assist the government with its counter fraud response. Requests for assistance should be emailed to: [covid19-counter-fraud@cabinetoffice.gov.uk](mailto:covid19-counter-fraud@cabinetoffice.gov.uk)

### Public:



National Cyber  
Security Centre

If you receive a call you believe to be fraudulent, hang up. If you are suspicious about an email you have received, forward it to [report@phishing.gov.uk](mailto:report@phishing.gov.uk). Suspicious text messages should be forwarded to the number **7726** which is free of charge.



National Fraud & Cyber Crime Reporting Centre  
[actionfraud.police.uk](http://actionfraud.police.uk)

If you believe you have been the victim of fraud or identity theft, you should report this directly to Action Fraud either online; [actionfraud.police.uk](http://actionfraud.police.uk) or via phone **0300 123 2040**.

**CrimeStoppers.**

If you have any information relating to vaccine fraud you can stay 100% anonymous by contacting Crimestoppers COVID Fraud Hotline online; [covidfraudhotline.org](http://covidfraudhotline.org) or phone **0800 587 5030**.

## “Quiet Lanes Suffolk”

The Parish Council have decided to take part in the Quiet Lanes Suffolk initiative and has completed the expression of interest in the roll out programme.

A pilot scheme was trialled in east Suffolk during 2014 and has proved to be successful. New uptake is good with 40% of all Suffolk Parishes having a least one route included. Of course, not all Parishes have the ability meet the required criteria.

Values	Babergh	East Suffolk	Ipswich	Mid Suffolk	West Suffolk	Grand Total
Number of PARISHES engaged	37	78	1	51	25	192
Number of nominated LANES	87	182	11	82	37	399
<b>Number of nominated ROUTES</b>	<b>67</b>	<b>146</b>	<b>7</b>	<b>68</b>	<b>35</b>	<b>323</b>
Indicative number of signposts	188	362	12	166	68	796
Total DISTANCE of Routes (km)	110	205	8	117	67	507
<i>% of nominated Routes</i>	22%	46%	3%	21%	9%	
<i>Percentage of Parishes engaged per District</i>	49%	44%	0%	41%	24%	
<i>Avg number of Routes per Parish</i>	1.8	1.9	7.0	1.3	1.4	
<i>Avg length of Routes per District (km)</i>	1.6	1.4	1.1	1.7	1.9	

Quiet Lanes are minor rural roads, typically C or unclassified routes, which have been designated by local highway authorities to pay special attention to the needs of walkers, cyclists, horse riders and other vulnerable road users, and to offer protection from speeding traffic. Cars are not banned from Quiet Lanes and the use of Quiet Lanes is shared. Measures such as lower speed limits and discrete road signs aim to encourage drivers to slow down and be considerate to more vulnerable users who can in turn use and enjoy country lanes in greater safety, with less threat from speeding traffic.



The criteria does not allow for unilateral designation of all single-track roads and those proposed have to be validated by the highways authority as being suitable and within the parameters of the scheme.

The Parish Council is supportive of the “Safer Routes to Schools” programme, people taking local exercise and providing highway connectivity to public footpaths and pavements.

On this basis the Parish Council have indicated that we believe two routes could be successfully validated, given their usage and association and wider off-road links. We are currently working with the Suffolk Quiet Lanes group who liaise with SCC to pursue these.

- Perrydown Lane to Buttons Green which is essentially the Parish boundary in practical terms.
- The A1141 junction through Earls Hall to Perrydown Lane.



These routes pick up both ends of the Bruff's Line, other footpath routes and therefore to Jeffreys Green / Mackenzie Place.

The county rollout is staged in three segments during 2021 relative to the legal designation / validation process. The route signage requirements also have to be validated by Highways and this is where we are, having offered the Lanes. Unfortunately, central funding from county is limited and divided across all the counties lanes. Therefore, the Parish Council are having to make some financial contribution, although at this time this is not clear until we hear back.

With the process on going the Parish Council are hoping to formally acknowledge the final details and any expenditure at the February Parish Council meeting. This is a requirement of the scheme.

Please contact the Parish Clerk should you require any further information or have any questions. We very much hope you support our proposals.

**Derek Southgate - Chairman Parish Council / Quiet Lanes Coordinator**

# Computer Corner

## Virtual Training

Not so much a tip this month but an offer to run some Windows computer training. During lockdown 1, I ran a number of Zoom sessions on aspects of Windows. I am happy to do the same again if there is demand. The time slot would be Monday's 2-3pm.

Topics can be anything Windows related:

- Basic Windows – intended for beginners. How to set up the Start Menu; using multiple windows etc.
- File management 1 – setting up and organising folders and files
- File management 2 – cloud storage e.g. OneDrive, Dropbox
- Email
- Internet and searching
- Basic Word
- Word Part 2
- Basic Excel
- Excel Part 2

Let me know using the email address below, or 07900 880888 if you are interested and in which sessions, and if there is sufficient demand I'll work with you to set up a programme.

**Neil Ashton**

[computer.circle@cockfield.org.uk](mailto:computer.circle@cockfield.org.uk)

# Cockfield W.I.



## January 2021 Meetings

We held two Zoom meetings on the 7th of January to discuss the five resolutions shortlisted to go forward for further discussion and voting following the Annual Meeting. Eight members joined the five speakers in the afternoon session and two in the evening. The following being the most popular choices with our members.

- No 1 A call to increase awareness of subtle signs of ovarian cancer
- No 2 Stop women dying prematurely from coronary heart disease (CHD)
- No 5 Stop the destruction of peat bogs to tackle climate change

We also joined a SW on Your Sofa talk about the Suffolk Wildlife Trust one afternoon as it tied in with one of the other resolutions about protecting nature space to create wildlife-friendly communities. Seven members joined in to hear about current work and previous projects from speaker Michael Strand.

Since joining the Wildlife Trust in 1951, Suffolk has led local conservation efforts in saving some of the most important wildlife sites in the county by establishing over fifty nature reserves covering an area of 7500 acres. They employ 75 staff across the county and have help from 1400 volunteers and a growing membership of over 25,000.

One of their first projects was saving and developing Redgrave and Lopham Fen which is the largest valley fen in England and one of the most important wetlands in Europe. Here they discovered the rare Fen Raft Spider and developed a successful breeding programme sharing the species with other sites.

Campaigns over the past few years have included - creating hedgehog highways: adding 77 acres to Lackford Lakes: Setting up community green spaces: Protecting Flagship Species - dormice, water voles, great crested newts, swift's, hedgehogs, lapwings and many others.

More information is available on their excellent website about programs and events for all ages (available online only at present) but many reserves are still open and free for you walk round. The information centres, hides etc are closed. Check before visiting.

Michael suggested these 5 ways to 'Do Your Bit' for encouraging wildlife into your garden.

Add water to your garden by sinking a basin or pot in the ground making sure to provide ways for wildlife to enter and get out safely. An upturned dust-bin lid makes an excellent shallow water habitat for insects.

Leave a % to grow wild or scruffy. 20% is equal to 2 million acres across the country. Resist the urge to tidy and leave an area of grass uncut if possible.

Connectivity - a hole in a fence, space under a gate (hedgehog highways), shrub hedges provide habitats for birds, bats, moths, small mammals and insects.

Boundaries and Structural Adversity - encourage sharing climbers over the fence with your neighbours, honeysuckle, clematis, etc redwings love pyracantha berries seemingly. Add areas of shade, long grasses, bare ground, trees, shrubs and climbers.

Grow all year round plants, reduce cutting back in autumn, leave seed heads, hips and hollow stems in winter.

Some good advice from Michael especially now while we're unable to get outdoors as normal.

It's important to spend time in your garden engaging with nature. Wrap up well, take a seat and see what species you can spot. Make notes, take photos of what you can see. Take part in the RSPB Big Garden Birdwatch from January 29-31.

I can recommend visiting the website and finding out all that's going on throughout the various sites and also reading about the rare fen raft spider. Did I mention it's 2.5 inches/7cm in diameter, chocolate-brown with a creamy yellow stripe down each side of its body. Cute and cuddly!

Brenda C



**Andy's Jet Force**

- All drainage work undertaken, from block drains to new drains
- CCTV surveys
- High pressure water jetting services
- Patios and driveways cleaned
- Septic tanks and treatment plants emptied, serviced and installed

**Andrew Waldock**  
jetforce@mail.com  
**T 01284 763952 M 07772 751645**  
**www.andysjetforce.co.uk**



**Cockfield CEVCP School**  
Cockfield  
Bury St Edmunds  
Suffolk IP30 0LA

Tel & Fax 01284 828287  
E-mail: ad-  
min@cockfield.suffolk.sch.uk

Dear Green Link readers,

Well what a start to the New year, we are open, then we are closed.

It's been very hard, more so than last time as we have more children wanting to come in. We have improved our home learning and we are delivering Zoom lessons too, alongside teaching children in school and responding to emailed work.

Things change daily, sometimes hourly. Testing of adults, tests to follow for children and free school meals is another debate! Parents are having to work at home too and very often they have more than one child sharing one tablet/laptop. Hard work for everyone but I have been so impressed with the work completed by the children.

There are lots of different views from the children of what's it been like in lockdown, some find it tiring learning this way, others worry, some like their mum/dad being the teacher, some do not! The weather doesn't help this time as the children feel stuck in, but some are just enjoying going for a walk. We hope that after half term we will see some normality return.

We hope everyone is keeping well and safe in the community and next time I will be able to share some more exciting news.

Best wishes,

Mrs Harkin  
Head teacher

# STEPHEN GREEN CARPETS

Quality Carpets & Vinyl's Supplied & Fitted  
All Aspects taken care of Gripper - Glue - Underlay

Free Quotations

PHONE 07970 488851

EMAIL: SGREENCARP@AOL.CO.UK



## Vision Safety

Confused by the maze of Health and Safety legislation affecting your business? Call us now for experienced common sense advice from experienced health and safety consultants.

Who can:

- Assist with your Covid 19 compliance
- Provide pragmatic health and safety advice,
- Deliver expert health & safety training including e-learning,
- Provide competent construction health and safety advice in compliance with CDM2015,
- Conduct thorough health and safety audits,
- Take lead for accident investigation and support,
- Can support your all year round health & safety requirements,
- Provide assistance in obtaining SSIP accreditations,
- Will answer all your health & safety questions, Including help with tenders.
- Provide occupational health services,

Call Tony now on: 07485 089848

Email: [Visionsafety@gmx.com](mailto:Visionsafety@gmx.com)

## Victor Keyton

Most makes of lawnmowers serviced,  
sharpened, repaired  
Ride On or Walk Behind  
Collection/Delivery Available  
Free Estimates

Pruners,  
loppers,  
shears etc.  
sharpened

01284 828264 or 07860 762424  
Smithwood Green Cockfield



# LET'S S.C.R.A.P. FLY TIPPING!



If it's **YOUR** waste, it's **YOUR** responsibility.  
Dispose of **YOUR** items properly to avoid an **UNLIMITED FINE**.

Could YOU be fly tipping?

# FLY TIPPING IS THE ILLEGAL DUMPING OF ITEMS



## Items and bags left...

beside street bins and recycling banks, on the floor of communal bin areas,



outside closed Household Waste Recycling Centres and charity shops ...are all **FLY TIPPING!**

If bins or banks are full, or the shop or centre is closed, take YOUR items away with you – DO NOT leave them behind, or YOU could receive a **Fixed Penalty Notice** or face an **UNLIMITED FINE.**

## Why fly tipping is rubbish



It is dangerous to people, animals and the environment.



It is ugly; it spoils our towns and devalues the local area.



It harms the countryside and costs landowners thousands to clear.



It encourages others to dump more.



It attracts other antisocial behaviour such as graffiti and vandalism.



It is expensive for council tax payers, local councils and landowners.

Every year hundreds of pounds are spent by taxpayers, landowners and private individuals clearing illegally dumped waste in Suffolk - tens of millions in England as a whole.

Fly tipping is punishable by an **UNLIMITED FINE** or **IMPRISONMENT**.

## Is YOUR business disposing of its waste correctly?

**EVERY business that produces waste in the UK has a legal 'DUTY OF CARE' to manage it properly from the moment it is produced until it is either recycled or disposed of.**

**OVER 50%** of UK businesses are not complying with the law and **90%** of these are small companies with fewer than 50 employees\*.

It is YOUR legal responsibility to always use a registered waste carrier, and/or register to transport YOUR own waste. The correct paperwork must be kept for at least two years.

A lack of understanding will not stop YOU receiving an **UNLIMITED FINE** in court.

These websites will help your business comply with the law and YOUR Duty of Care:

- [gov.uk/managing-your-waste-an-overview](https://gov.uk/managing-your-waste-an-overview)
- [rightwasterightplace.com](https://rightwasterightplace.com)
- [tacklingflytipping.com](https://tacklingflytipping.com)

\*data from Right Waste, Right Place.

## How YOU can report fly tipping

**Fly tipping is an illegal activity. If you see it in action, call the Police on 999 and report it as a crime in progress.**

**ALL** fly tipping should be reported online to your local council, regardless of whether you saw it in progress or have just discovered it.

**REPORT HERE:**

**[suffolkrecycling.org.uk/fly-tipping](https://suffolkrecycling.org.uk/fly-tipping)**

**Record as many details as possible:**



vehicle's  
registration  
number and  
details



description  
of the people  
involved



the direction  
they were  
travelling



the exact  
location



the date and  
time that you  
discovered the  
rubbish



details of  
the items  
dumped



photos of the  
waste and of  
the fly tippers  
if possible

**Never put yourself at risk when  
reporting a fly tip!**



## How YOU can prevent fly tipping

We ALL have a legal obligation, or **DUTY OF CARE**, to ensure our household or business waste is disposed of correctly. The best way to stop organised fly tipping is to make sure that only authorised waste carriers take your waste away.

YOU could face prosecution and an **UNLIMITED FINE** if your waste ends up fly tipped by someone else.

**Remember, if it's YOUR waste, it's YOUR responsibility!**

Avoid a fine. Put items in a bin, not by the side; don't leave items out for the 'scrap man'; and **always follow the S.C.R.A.P. code if you are having household waste removed.**

### Let's **S.C.R.A.P.** Fly Tipping

#### **S**USPECT

all waste carriers; do not let them take your waste until they have proven themselves to be legitimate. A professional waste carrier should happily answer reasonable questions.

#### **C**HECK

their waste carrier's registration details, then verify them by searching the Environment Agency website (link below) or by calling **03708 506 506**. Note down the registration number of the vehicle used to take your waste away.

#### **R**EFUSE

unexpected offers to have any rubbish taken away. If you do not trust that someone who you have spoken to will be disposing of waste legally, report their vehicle registration and name to the Environment Agency.

#### **A**SK

what will happen to your rubbish and seek evidence that it is going to be disposed of appropriately.

#### **P**APERWORK

should be obtained. Make sure you get a proper invoice, waste transfer note or a receipt for your waste removal. This should give a description of the waste and provide the waste carrier's contact details.

## How YOU can find LEGAL waste carriers:

Always carry out your own research and choose whose services you wish to use. You can find licensed waste carriers in your neighbourhood by **calling the Environment Agency on 03708 506 506**

or **visiting: [environment.data.gov.uk/public-register/view/search-waste-carriers-brokers](https://environment.data.gov.uk/public-register/view/search-waste-carriers-brokers)**

## What else can YOU do with YOUR waste?



### **Use your kerbside waste and recycling collection**

Visit your council's website to confirm which items can be collected along with other service information.



### **Use your Neighbourhood Recycling Bank or Recycling Centre (RC)**

Find out more information about where you can recycle certain items, the location and opening hours of your nearest RC.

**[suffolkrecycling.org.uk](https://suffolkrecycling.org.uk)**



### **Use your council's bulky waste collection service**

All councils in Suffolk offer a service to collect bulky items directly from your house – refer to your council's website or contact them for more details.



### **Sell or donate your unwanted items**

You can sell or give away items online using websites such as eBay, Gumtree, Freecycle or social media community groups. Only donate items to charity shops during their opening hours.

## What are WE doing?

This information is brought to you by the Suffolk Fly Tipping Group – a multi-agency task force working together to combat fly tipping. The group is made up of: Suffolk's local authorities, the Environment Agency, Suffolk Constabulary, the National Farmers' Union, Forestry England, County Land Owners Association and the Broads Authority.

**Visit: [suffolkrecycling.org.uk/fly-tipping](https://suffolkrecycling.org.uk/fly-tipping)**

Printed on recycled paper. Please recycle after use.









## Cockfield Community Council News

### February 2021

In these challenging times it is at least good to see the days getting longer. Unfortunately current circumstances being what they are the Community Council is not at this point able to firm up any plans this year, with one exception.

Two virtual Speed Quizzes were held in November and December and as ever we are very grateful for the efforts of Neil Ashton who has organised these. A third virtual quiz will be held on Sat 30 Jan with the following one on Sat 27 Feb. The technology is easy to use. Do please give it a go!

In the meantime if you have any ideas or suggestions do please get in touch with our Secretary Janne Cutting-Keyton ( [janne@twerbs.co.uk](mailto:janne@twerbs.co.uk)) or 01284 828264



### **Fred Durso**

### **Carpentry & Joinery**



The Hermitage, Bury Road, Cockfield, Bury St Edmunds, IP30 0JL

**Fitted Kitchens**  
**All Types of Woodwork**

**Purpose Made Fitments**  
**Free Estimates**

**Tel: 01284 828186 Mob: 07790 479064**  
**e-mail: [freddurso41@gmail.com](mailto:freddurso41@gmail.com)**

## Cockfield Community Broadcasts

In February 2015 we introduced a new email system to broadcast information to our community on events, activities and other topics of interest. This system evolved from the original eVine system and has a number of advantages including the ability for recipients to control their own subscription.

Our broadcasts sit alongside Green Links and the website as key methods of engaging with our community. For example when events are published in Green Links, we are able to use the broadcasts to let you know of updates and changes as they happen.

So we really want as many people as possible to subscribe to receive our broadcasts. Of course not all emails will be of interest to every subscriber. But since the introduction of the new system we have issued 135 broadcasts - an average of around 5 per month - so it is not a significant addition to the number of emails you already receive.

To subscribe, please visit our website at [www.cockfield.org.uk](http://www.cockfield.org.uk) and follow the link in the footer of any webpage. If you have any questions or concerns please contact me at [neilka@btinternet.com](mailto:neilka@btinternet.com).

*Neil Ashton*





Dear Friends

As I looked back at previous February articles for Green Links I felt slightly sad - as they often advertised services and events that were going on in the benefice. At the moment of course we are unable to hold any of the normal events that we would be looking forward to.

We have also taken the decision to suspend holding services in our churches too - as we feel it is too much of a risk to meet together physically for worship. We are therefore continuing to livestream our weekly Sunday service online via our facebook page. May I take this opportunity to thank all of you who have been faithfully tuning in to our services, and hope that you are still able to worship from your own homes.

I had to smile when one of the members of the congregation emailed me to say that they were able to worship in their pyjamas from the warmth of their own homes - one of the few advantages of lockdown as our churches are very difficult to heat during the cold weather!

Even though at times it may seem that God has forgotten us I know that this is not the case. Our God is there with us as we experience these difficult times, wanting to share in our pain and our sorrow at all those whose lives have been affected by loss and difficulty.

May I also extend our offer as a church in the village to any who are in need of assistance, we have a team of people who are ready to listen or to shop or collect prescriptions etc. The church exists to serve its local community - do use us!

Yours in Christ  
Sharon

Canon Sharon Potter  
revsharon2@gmail.com  
01284-828599 or 07825 086063

## Cockfield Benefice

### Rota of services for February 2021

Sunday 7th February 2nd Sunday before Lent	10am Morning Prayer via facebook
Sunday 14th February Sunday next before Lent	10am Family@Church via facebook
Wednesday 17th February Ash Wednesday	10am A Service for Ash Wednesday via Zoom & facebook*
Sunday 21st February 1st Sunday in Lent	10am Holy Communion at home via facebook
Sunday 28th February 2nd Sunday in Lent	10am Worshipping Together via facebook

All online services can be access via <https://www.facebook.com/cockfieldbenefice/live/>

\*For a zoom invitation to Ash Wednesday's service email [revsharon2@gmail.com](mailto:revsharon2@gmail.com).

There will be no morning prayer at Cockfield until further notice.

Please check the benefice website at [www.cockfieldbenefice.com](http://www.cockfieldbenefice.com) for up-to-details of services





Town & Country Interiors

All aspects of building work undertaken.

Extensions, renovations, kitchens, bathrooms and bedrooms.

Please call 01284 828 592 or 01787 282 353 or visit our website [www.tcisuffolk.co.uk](http://www.tcisuffolk.co.uk)

*Hennessey*  
LIFESTYLE

## NEW FARM SHOP

- Local Produce
- Fruit and Veg
- Delicatessen
- Butchers
- Wines, cordials, soft drinks

Tel: 01284 386015

[www.hennesseylifestyle.co.uk](http://www.hennesseylifestyle.co.uk)

[info@hennesseylifestyle.co.uk](mailto:info@hennesseylifestyle.co.uk)

Overland Business Park, Sudbury Road,  
Bury St Edmunds, IP30 0UL

## BRADNAMS TREE SERVICES

All aspects of tree surgery undertaken

Hedges expertly managed

Free Estimates

Stuart Bradnam BSc RRD

Call 01284 388756

## PERFECT PRESSING

IRONING PILING UP?

HELP NEEDED WITH SPRING CLEANING?

- Reliable Ironing, Laundering & Cleaning Service
- Collected & Delivered Promptly
- One Off, or on a Regular Basis

Please contact Allie on 07732 111802 or email

[info@perfectpressing.co.uk](mailto:info@perfectpressing.co.uk)

[www.perfectpressing.co.uk](http://www.perfectpressing.co.uk)

## Oil-fired boiler engineer

**Mark Smith (OFTEC Registered)**

Fully trained in both domestic and light commercial boilers.

All repairs, servicing and commissioning undertaken by  
a friendly and efficient Cockfield based engineer.



**Registered  
Business**

Competitive prices

Tel: 01284 827446



**Registered  
Technician**



**Your local  
tree surgeon  
based in Bury  
St. Edmunds**

**Gorilla Tree Services** is your local tree care company that you can trust for all kinds of arboricultural services. We are passionate about trees, their environment and the work we do with them.

Do you want a beautiful looking estate with healthy trees and plants?  
Contact us today to discuss our services.

M: 07851 459 734 T: 01284 810 027  
E: [info@gorillatreeservices.co.uk](mailto:info@gorillatreeservices.co.uk)  
[www.gorillatreeservices.co.uk](http://www.gorillatreeservices.co.uk)



- Tree felling
- Tree surgery & stump removal
- Crown raise and reduction
- Crown thinning
- Pollarding & formative pruning
- Hedging & pruning
- Green waste removal
- Chipper hire with operator
- Storm / Wind damages trees
- Phone line clearing



# ALL ASPECTS LANDSCAPING

**01284624022— 07391253048**  
**WWW.ALLASPECTSLANDSCAPING.CO**  
**CALL NOW FOR A FREE NON OBLIGATION QUOTE**



Proud members of  
**Checkatrade.com**  
 Where reputation matters

**We cover all hard and soft landscaping with many years of experience**

**FENCING -DRIVEWAYS - PATHS AND PATIOS-BLOCK PAVING -  
 GARDEN GATES AND WALLS -TURFING AND SEEDING-GARDEN  
 CLEARANCES-DIGGER WORK -CURB STONES-ALL TREE WORK  
 AND HEDGE CUTTING-GRASS CUTTING LARGE/ SMALL AREAS**

## QUALITY HOMECARE

Are you, or do you know of someone that would benefit from having qualified and local care at home? A friendly, regular face you can look forward to seeing and having company with whilst receiving professional support.

Any daytime/evening duties (personal care, appointments, cooking, cleaning, shopping, laundry, gardening) undertaken to a high standard by a Level 2 qualified Health and Social Care domiciliary carer.

Limited spaces. References available on request.

For further information contact Linda: **07419335762**



## S.E.P PAINTERS

For all your Painting & Decorating requirements  
 Fully professional service. Prompt, efficient, reliable.

No job too big or too small. Dulux Accredited  
 Competitive prices. Free Quotations. City & Guilds qualified.

Phone Andy on: 01787 375824

Mobile: 07748 800701 or 07802 613902

Email: [andy@seppainters.co.uk](mailto:andy@seppainters.co.uk)

VISIT OUR WEB SITE ON [www.seppainters.co.uk](http://www.seppainters.co.uk)

# Lavenham Library

**Sadly, the library is closed due to the current lockdown in England.**

**However, this is an ideal time to check out all our services, activities and events that are still running online.**

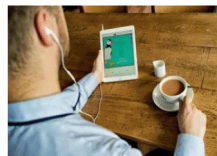
**From eBooks, author events and our online reading group to cultural and Wellbeing videos and podcasts we have something to interest everyone.**



If you joined in with any of our Health and Wellbeing activities in January you will be pleased to know that our online Pilates class and Yoga for Beginners will continue through February – full details can be found on our website

## Read, Listen, Watch

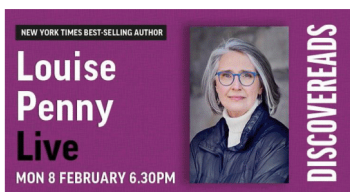
Why not check out our elibrary too – you can download eBooks, eAudio, eNewspapers and eMagazines as well as music and indie films and documentaries. Staff are happy to help you access these services if you have any problems. Email us at the address below and we will get back to you



Our online reference section gives you free access to resources such as Ancestry, Find My Past and the British Newspaper Archive as well as resources to help with your children's homework and lockdown learning – including Britannica for children and students and Oxford Owl.

## DiscoverReads Zoom Event Mon 8 February 2021 from 6.30pm

### Author Chat & Q & A with bestselling author Louise Penny



If you enjoyed last month's chat with Tracy Borman, why not join us again for our next event. Please join us at this FREE event which will take place via Zoom.

Full details of how to join are on our website. All events are uploaded to the Suffolk Libraries Youtube channel afterwards so you can watch them at a time to suit you

Check our Facebook page for **Lego challenges** and **Family Crafts** and we will be adding a weekly **Storytime** session soon.

If you are missing **Tot Rock**, please contact the library to be added to Nick's Zoom sessions which run on Tuesday afternoons from 2.30pm.

## Contact Details



Lavenham Library, Lavenham Village Hall, Church St, Lavenham CO10 9QT

Tel No: 01787 247729

[www.suffolklibraries.co.uk](http://www.suffolklibraries.co.uk)

Email: [lavenham.library@suffolklibraries.co.uk](mailto:lavenham.library@suffolklibraries.co.uk)

Suffolk Libraries HMRC charity number XT34476

## FIELD COMPOST LTD

We'll Help Your Garden Grow



Composts  
Manure  
Soil Improvers  
Soil  
Bark  
Woodchip  
Mulch  
Sand and Gravel  
Lawn Care

[www.fieldcompost.co.uk](http://www.fieldcompost.co.uk)

[sales@fieldcompost.co.uk](mailto:sales@fieldcompost.co.uk)  
01440 966966

## JP Services

**Sleepers**

**Timber**

**Scaffold Boards**

**Oak Barrels supplied**

**07970 559251**

[www.jp-services.info](http://www.jp-services.info)



**Your guide  
to getting  
recycling right  
in Suffolk**

 **Suffolk recycles**



## THORPE LANDSCAPING & GARDENING SERVICES

Contact Gavin on 07484 511 804

- To include a regular maintenance package for clients.
- Garden design.
- All soft landscaping, including turfing, seeding, planting etc.
- Hard landscaping, including Patios, walls, decking, driveways, fencing, all types of gates.
- Garden maintenance from hedge cutting, grass cutting, pruning, weeding.

# **PS**

## **PAUL SAINSBURY**

### RESTORATION & BUILDING

**With over 20 years  
experience in restoration  
and all aspects of building**

**Free Estimates  
Mobile 07785 582556  
Email: [enq@paul-sainsbury.co.uk](mailto:enq@paul-sainsbury.co.uk)**

## **A N GILLAM**

### **Building**

All aspects of roofing, chimney work, Lime plastering & rendering.  
Chimney sweep

*Free quotes - No job too small,*

The Mouse House, Bradfield St Clare, IP30 0EL

**Tel 01284 388508 Mob 07961 878564**

## **KEVIN SEGGIE Electrical Services**

30 Years Experience

Part P Qualified      ECA Member      No Job too small

Domestic/ Commercial/ Industrial Work undertaken

Burglar Alarms fitted

Insurance testing

Free Estimates

Fully Guaranteed

Tel: 01284 830786      Mobile: 07768 108157

e-mail: kevinseggie@yahoo.com

## *Higher Hats*

*Est 2013*

to hire / or buy  
hundreds of hats, hatinators and fascinators. every shade and  
hue of beautiful hats from the stylishly simple to the  
outrageously show stopping.  
hats for weddings, days at the races, graduations,  
garden parties, regattas or just because.

phone Caroline Mccleave at higher hats to  
arrange an appointment at our premises near  
Lavenham.

07867 768732 / 01284 828841

'How a hat makes you feel is what a hat is all about.' Philip Treacy

## **SUFFOLK REVIVE A DRIVE**

Would you like your drive or patio restored to a newly laid finish.

Improve both the appearance and value of your property.

**HIGH PERFORMANCE PRESSURE CLEANING**

**PATHS, PATIOS, DRIVEWAYS, WALLS, GARDEN FURNITURE**

**DECKING, TENNIS COURTS, STABLES, SWIMMING POOLS and MORE**

**RE-POINTING, RE-SANDING AND SEALING ALSO AVAILABLE**

**TARMAC RE-DRESSED - REPAIRS UNDERTAKEN**

Phone for a FREE quotation Tel: MARK 01284 828294 or 07833 582636



*All types of electrical work covered from changing a light fitting to a complete re-wire.*

New circuits • Fuse board upgrades • House re-wires  
Lighting design • New Kitchen wiring • Changing light fittings  
Garden lighting • Alarm systems • Smoke alarms  
Heating controls • Commercial electrics • PAT testing  
Electrical condition testing and reporting • Certification • Fault finding  
Emergency call outs • Free advice, quotations and estimates

**Call Steve on 07961 576677 or 01284 828484**  
steveroberts101@outlook.com



**Your door-to-door laundry service  
& wet cleaning with  
Lagoon® Advanced Care**  
*The green cleaning revolution for  
your clothes*

**Opening Hours: Mon-Fri 8am-5pm**

**Unit 12 Lady Lane Industrial Estate, Crockatt Road,  
Hadleigh IP7 6BQ**

**Tel: 01473 558 448**

**e-mail: [sales@pressganglaundry.com](mailto:sales@pressganglaundry.com)**

**[www.pressganglaundry.com](http://www.pressganglaundry.com)**



# Cockfield Community Classifieds

Offered Free  
Large Glass TV Stand/Unit  
125cmx70cm 38cm tall  
Comes complete with dust  
but not the electrical items  
in the photo  
Collect Cockfield 828264



## For Sale

Quality Leather Sofas, armchair and footstool  
Collection only in Cockfield 828264

These items are very heavy and will need 2 men and a van or trailer.

Some normal signs of wear but there are no rips or tears to any of the leather.



3 seater £150  
2 seater £150  
Chair £60  
Footstool £35

Adverts in CC Classifieds' are free to insert please send your copy to the editor at [janne@twerbs.co.uk](mailto:janne@twerbs.co.uk) or 01284 828264 by the 15th of the month.

Green Links accepts no responsibility for the accuracy of any advert placed in Green Links and buyers must satisfy themselves of the quality or value of any item prior to purchase or collection.



# Todds Removals

& Todd Storage

a reliable local service you can trust

*Removals*

*Storage*

*Packing materials*

*Packing service*

*UK, Europe and beyond*

*Home or Business*

*Self Storage*

## Moving?

Call us on **01787 377 489**

**www.todds-removals.co.uk**



Memb No: 1027



## Leon Brown

**Arb-Agri Contracting**

Tel: 01359 408521

Mobile Number: 07552393830

e-mail : [leonbrown.28@hotmail.co.uk](mailto:leonbrown.28@hotmail.co.uk)

**\*\* Tree Surgery Services \*\***

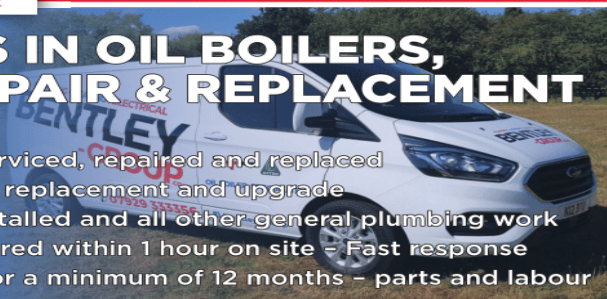
- |                                |                                   |
|--------------------------------|-----------------------------------|
| * Dead Wooding & Crown Lifting | * Felling & Sectional Dismantling |
| * Woodland Management          | * Crown Reductions                |
| * Chipping                     | * Hedge Cutting                   |
| * Firewood                     | * Garden & Site Clearance         |
|                                | * General Ground Maintenance      |

PLUMBING - AIR CON - HEATING  
**BENTLEY**  
-GROUP.co.uk

**Tel 07929 333356**  
**enquiries@bentley-group.co.uk**

## SPECIALISTS IN OIL BOILERS, SERVICE, REPAIR & REPLACEMENT

- Oil tank replacement
- Hot water cylinders serviced, repaired and replaced
- Heating service repair, replacement and upgrade
- Bathroom/showers installed and all other general plumbing work
- 95% breakdowns repaired within 1 hour on site - Fast response
- All work guaranteed for a minimum of 12 months - parts and labour



## Out of fuel? Emergency oil delivery required? Tank leaking?

# CARGATE engineering

Priory Barns, Drinkstone Road, Gedding, Bury St Edmunds, IP30 0QE

### We help customers stay warm around the clock!

Cargate Engineering is a family-run Oftec-registered business specialising in supplying emergency fuel to homes and businesses in remote areas.

Since being established in 1996, Cargate Engineering has also developed experience and skills that allow us to offer a varied and comprehensive list of services, including everything from routine pump station maintenance to regularly scheduled septic tank cleaning and emergency call outs for issues such as overflowing septic tanks and drainage blockages. In addition, we produce high quality CAD drawings, are experts in root ingress removal, and are licensed hazardous waste carriers, ensuring we can meet all your needs. We take pride in our ability to offer a bespoke and friendly service with effective results that will last.

- Emergency Small Load Fuel Delivery and Boiler Relight Service
- Emergency Oil Tank Pump Down and Loan Tank Service
- Tank Replacement Installation Service by Experienced Oftec Engineers
- Contaminated Fuel Uplift Service Meeting Full ADR regulations
- Tank Internals and Bund Sludge Cleaning Service
- Oil Spill - Loss - Validation and Remediation Works
- Decommission of Redundant Fuel Tanks and Fuel Buy Back Scheme



Excellent services at competitive prices...

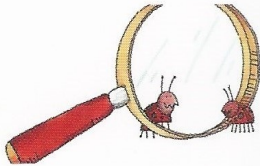
Bury St Edmunds:  
01284 386 538

24/7 Emergency:  
07974 495 362

Email:  
info@cargateweb.co.uk

Website:  
www.cargate-engineering.co.uk

## ANGLIA PEST CONTROL



### PEST CONTROL SERVICES since 1986

Call Will: 07919 356 155

Email:  
iarwainbenadar77@gmail.com

## Bridge Farm

Sudbury Road, Lavenham, CO10 9PJ

Tel: 01787 247522

From Race Horses to Rabbits...

.....we can help you take care of all your animal and poultry needs with our very competitive prices on feeds, supplements and varied types of bedding inc. Hay , Straw & Woodchips

**Why not come and visit our Wild Bird Centre?  
There is so much to see!**

Also we sell Bottled Gas, Coal & Wood.  
Dishwasher Salt, Mushroom Compost & Peat.

We can deliver locally  
Open Monday - Saturday  
9.00am - 5.00pm  
Sunday  
9.00am - 1.00pm



# TOMLINSON GROUND CARE LTD



**Horticultural & Garden Machinery Suppliers** JOHN DEERE

**Sales Service Parts Repairs Toys**

John Deere ride on mowers from £2095 inc vat

Walk behind petrol & battery mowers from £199 inc vat

Strimmers, hedge cutters, blowers, chainsaws etc.

Garden tools, paddock & turf machinery

Service & repair of all makes

***Set in over 20 acres – Try before you buy***

**Established in Buxhall since 1991 - We hope to see you soon**

Brettenham Road, Buxhall, Stowmarket IP14 3DL

01449 736060 [www.tomlinsongroundcare.co.uk](http://www.tomlinsongroundcare.co.uk)



**AL-KO**

**EGO**

**ECHO**

**WEIBANG**



Complete Gas,  
Oil & LpG  
Installations.

T: 01787 247540

E: [info@grdplumbingandheating.co.uk](mailto:info@grdplumbingandheating.co.uk)



**Burnerserve** Ltd

Maintenance, Repair  
and Servicing  
for Oil Fired Boilers  
and AGA Cookers.

**Oftec Registered Engineers,  
Local, Reliable, Professional.**

T: 01787 247540

E: [info@burnerserve.co.uk](mailto:info@burnerserve.co.uk)

W: [www.burnerserve.co.uk](http://www.burnerserve.co.uk)



Unit 5 Norman Way, Lavenham, Suffolk CO10 9PY

# Announcements

Do you have an announcement you would like included here?  
There is no charge for any announcements  
Please contact the Editor Janne Cutting-Keyton on  
01284 828264 or [janne@twerbs.co.uk](mailto:janne@twerbs.co.uk)

***Special cakes for  
special celebrations***

*Jean Barker*

**[www.amazingcakesbyjean.co.uk](http://www.amazingcakesbyjean.co.uk)**



**01359 241135**



## Bury & District Pest Control

### PEST CONTROL SPECIALISTS

Domestic, Farm and Commercial premises

*No job too small - Contracts welcome*

*Effective control solutions for:*

- Insects
- Wasps
- Ants
- Rodents
- Moles
- Hornets
- Rabbits
- Squirrels
- Flies
- Birds etc...

25yrs Experience of  
infestation control



*For a total Professional friendly local service*

**Call: 01284 220096**

or

**01359 232745**

info@burystedmundspestcontrol.co.uk  
www.burystedmundspestcontrol.co.uk

# MOT

IN

COCKFIELD



**+ MOTOR VEHICLE  
SERVICE + REPAIRS**

## W.A WATTS

SINCE 2017

## A U T O M O T I V E

**M: 07825 744 974**

**T: 01284 828 325**

**wawattsautomotive@gmail.com**

**Unit 1, Peppers Hall, Old Hall Lane, Cross  
Green, Cockfield, IP30 0LQ**

## Nicholson Executive Travel

Professional Chauffeur Service

Airports and Seaports

Business Travel

Any UK Destination

Accounts Welcomed

**Tel: 01359 232648**

**07850 370465**

**roger.nicholson1964@gmail.com**

To advertise your  
business or services in  
Green Links  
please contact our  
Advertising Manager  
Sue Harrison  
at  
**sue.harrison42@gmail.com**



Green Matters caters for domestic and commercial clients offering:

- Grass Cutting
- Turf Laying
- Pruning
- Planting
- Garden Clearance
- Hedge Cutting
- Restoring and Maintaining
- Advice on all garden aspects
- Fully Insured
- Environment Agency Registered



☎ 01284 728044 📞 07941 640560

✉ [greenmattersgardenservices@gmail.com](mailto:greenmattersgardenservices@gmail.com)

## BMW

Best value independent servicing in East Anglia

### John Gagen Vehicle Services

Over 25 Years **BMW** experience  
Full Diagnostic Facilities  
MOT Testing  
Sympathetic to all older vehicles  
Collection and delivery available

**Unit 2 Peppers Hall, Cross Green,  
Cockfield, IP30 0LH  
Tel 01284 827404 daytime  
Mobile 07969 367640**

# Wavelength Aerials

## Aerials • Satellite & TV Systems

Neat & Discreet Installation + Maintenance + Repair

For a free quote contact us on 01449 678 653 / 07828 085 294



**Supply and wall-mounting  
of Plasma & LCD TVs**

[info@wavelengthaerials.co.uk](mailto:info@wavelengthaerials.co.uk)  
[www.wavelengthaerials.co.uk](http://www.wavelengthaerials.co.uk)

## DAVID FOURACRE

Your Local Painters & Decorators

Interior & Exterior

All Aspects of Work Undertaken from Surface Preparation/Repair  
to Final High Quality Finish

For Advice & Free Quotation please call

**01449 736283 Mobile: 07810 482311**

or e-mail: [yoursafehands@gmail.com](mailto:yoursafehands@gmail.com)

## Professional Chimney Sweeping & Stove Installation

**Chimney Matters**

**Town and Country**

**Mobile : 07767 864127**

**Phone: 01284 789663**

**[www.chimneymatters.co.uk](http://www.chimneymatters.co.uk)**



- Open fires, Wood burners swept and serviced for maximum efficiency.
- Wood and Multi fuel Stoves installed.
- Certificates issued.
- Cows and Bird guards fitted.
- Fully insured.



### *Walnut Tree Designs*

**BESPOKE CURTAINS & BLINDS**

*Free design consultation in your own  
home- Complete made-to-measure  
service for all your soft furnishings  
requirements*

**CUSHIONS - FABRICS – TRIMS-  
POLES - UPHOLSTERY - PELMETS  
- HEADBOARDS – VALENCES - VE-  
NETIAN & ROLLER BLINDS**

*Call Viki, Angela or Terri Oxley to  
arrange a free consultation*

*Tel: 01284 828263*

*M: 078269 30011*

*e-mail: [walnuttreedesigns@gmail.com](mailto:walnuttreedesigns@gmail.com)*



**VANITY FUR**  
**DOG GROOMING**

### LUXURY DOG GROOMING

From a full groom to a simple wash & dry

**ALL DOGS ARE PAMPERED AT  
VANITY FUR!**

For more information contact **Charlotte**

**01284 827089**

**[www.vanity-fur-doggrooming.co.uk](http://www.vanity-fur-doggrooming.co.uk)**

Two A's, Hoggards Green, Stanningfield,  
Bury St Edmunds, IP29 4RG



## PAUL THE PLASTERER

All aspects of plastering work undertaken  
No job too small



Fully qualified, Clean, Honest and reliable  
Tradesman

15 Years experience

Call Paul – 01284 830887/ 07958 229559

Lawshall Village, Bury St Edmunds IP29 4PW

Free  
estimates



== *W. A. Deacon* ==

Funeral Services



*An Independent Family Company,  
dedicated to your service.  
Established over fifty years.*

Golden Charter pre-paid arrangements available.  
Private Chapel of Rest

Norman Way, High Street, Lavenham,  
Suffolk, CO10 9PY.

*24-Hour Telephone Service*

01787 248282 & 248147

## SEPTIC TANK EMPTYING AND DRAIN CLEANING

Tank emptying from £80

## A K SERVICES

Ramsey Road Hadleigh

01473 822694  
07891341645  
Available 24/7

No callout charge for  
emergencies

## WINDOWS CLEANED AND GARDENS TIDIED

***Call Craig for a free quote and introductory discount***

**01284 827110 / 07816 932878**

**brightgreen22@gmail.com**

**www.brightandgreen.co.uk**

*All work fully insured*

# BRIGHTGREEN

# NUNNAWAYS JETTING SERVICE



Soakaway Services  
Drains Unblocked  
Septic Tank Servicing  
Driveways/Patios cleaned  
Installation services available

**24/7**

**CALL TODAY on 01359 232716 or  
Mobile 07941 523498**

## Rothwell's Carpet Cleaning

### Carpet Cleaning & Stone Floor, Upholstery, Rugs

*A few points that make us stand out,*

Rothwell's has been in business since 1993

We're an honest local family firm.

Our large truck mounted machines mean  
more cleaning & drying power  
for the best results possible.

Members of both the NCCA and TACCA.

We will move the furniture.

100% satisfaction or it's FREE.

Call Oliver and Max Campbell  
for expert help today.

**01638 428 060**

**www.Rothwells.biz**

## GARDENER

Local gardener seeks  
domestic work

Over 17 years experience

- Lawn treatment
- Lawn cutting
- Weeding
- Pruning
- Hedge cutting
- General Garden  
Maintenance

Please contact Mr Cheng  
Pope on

**07736072083 or**

**kaiwan1010@gmail.com**

## CJ Computer Services

Repairs - Upgrades - Custom Build Computers

Reasonable Charges - On Site Service - Fully Insured

Fully Qualified Technician - One 2 One Tuition - Lap-Top Sales

Wireless Broadband Set-up and Secured

**Chris 01359 271772 or 07717 604180 [chris@cjcomputerservices.biz](mailto:chris@cjcomputerservices.biz)**

# Ventanilla Blinds

Rollers Verticals Romans Pleated  
Wooden & Metal Venetians Sheer Rollers  
Conservatory blinds Blackout blinds  
Perfect fit Pleated, Roller & Venetian  
Awnings, Garden sails & Roller curtains

01787 313677 or 07966 371963

## CHIMNEY SWEEP

### ECO SWEEP

CHIMNEY SERVICES

- NEW POWER SWEEPING METHOD USED FOR A MORE THOROUGH CHIMNEY CLEAN THAN BRUSHES.
- INDUSTRIAL HEPA FILTERED VACUUM.
- FULLY INSURED.
- INSURANCE RECOGNIZED CERTIFICATES ISSUED.
- SPOTLESS, RELIABLE AND FRIENDLY SERVICE.
- ALL CHIMNEYS, WOODBURNERS, AGA, BOILER FLUES SWEEPED.
- GUILD OF MASTER SWEEPS CERTIFICATED MEMBER.



TEL. 01359 232335

## TIME FOR YOU™

DOMESTIC CLEANING

**Are you tired of cleaning?**



We have the  
right cleaner  
waiting  
to help  
you.

**Regular - Weekly - Cleaner**

01359 258991

Typically £13 per hour

[www.timeforyousuffolk.co.uk](http://www.timeforyousuffolk.co.uk)



## **R W SERVICES**

### **PROPERTY & GARDEN MAINTENANCE**

All aspects of property maintenance covered.  
Garden Design & Construction, Painting & Decorating  
Roofing, Carpentry, Groundwork etc.

Free quotations      Fully Insured      References available

Rod Williams 01284 828965  
Mobile 0775 2626261

Local tradesmen with integrity



## **Oil-fired boiler engineer**

**Mark Smith (OFTEC Registered)**

Fully trained in both domestic and light commercial boilers.

All repairs, servicing and commissioning undertaken by  
a friendly and efficient Cockfield based engineer.



**Registered  
Business**

Competitive prices

Tel: 01284 827446



**Registered  
Technician**



# **TARLING FENCING**

**FENCING AND GROUND CARE SPECIALISTS**

Equestrian  
Agricultural  
Domestic  
Gate installation  
Landscaping  
Groundcare

**Contact John for a free quotation:  
01359 242496 or 07590 580512  
[tarlingfencing@outlook.com](mailto:tarlingfencing@outlook.com)**



**We specialise in Precision and Civil Engineering  
With over 30 years experience.**

We cover a wide range of manufacturing needs.  
Including CNC Milling and Turning,  
Structural Steels (CE Accredited),  
Welding Fabrication and Installation.

For more about us please visit our website  
[www.grahamparishengineering.co.uk](http://www.grahamparishengineering.co.uk)

Contact us on 01284 828118 or  
Email [parisheng@btconnect.com](mailto:parisheng@btconnect.com)

## **Congregational Church Corner**

Many years ago a certain radio station in another county had a regular programme called "Something to think about ". It is a title I could easily have adopted for these regular monthly pieces I have written for over twenty years. So here is something to think about.

Without a Creator human life has no ultimate meaning. We have to make sense of our own life in whatever way we can. We might as well invest as much as possible in money, sex, ambition, pleasure or whatever else we choose to live for, even if we know that they do not ultimately satisfy there is nothing else. But if there is a Creator, as the Bible insists and the world around us suggests, then we can conclude that life does make sense, we have been created for a purpose.

What is that purpose? What design was in God's mind when he made us? The book of Genesis reveals the Creators plan. He made us in "his image ". We are able to relate to him. That was his original plan for our lives, that we might live in his world in perfect relationship with him. The description of Adam and Eve in the Garden of Eden presents a picture of human life as it was designed to be. We are told that "God saw all that he had made and it was very good (Genesis 1v31). Human beings consciously submitted to God as their creator and enjoyed the perfect life as a result, harmony with their God leading to harmony with each other and the world around them.

If the Bible is right then we were created to live as Gods friends, it is not surprising that we do not function properly unless that friendship is in place. We were designed in such a way that we need food and liquid if we are to survive and we are hungry and thirsty until we get them. In a similar way we were designed to exist in a loving friendship with God. It is only in a relationship with him that life ultimately makes sense and nothing other than that can bring lasting satisfaction. It was a great church leader Augustine who many centuries ago wrote "Lord you have made us for yourself and our hearts are restless till they find their rest in you. "

PASTOR GORDON HOLD

Enquiries Pastor Gordon Hold  
01284 762663 ghold@gmail.com

# Cockfield Contacts

October 2020 Web

CATEY Pre-School	Teresa Rutterford	<a href="mailto:catey@cockfield.org.uk">catey@cockfield.org.uk</a>
Cockfield Carpet Bowls Club	June Pettit	<a href="mailto:carpet.bowls@cockfield.org.uk">carpet.bowls@cockfield.org.uk</a>
Cockfield Cemetery	Ralph Turner	828201
Cockfield Charties	Tony Box	<a href="mailto:charities@cockfield.org.uk">charities@cockfield.org.uk</a>
Cockfield Congregational Church	Pastor Gordon Hold	01284 762663
Cockfield Football Club	Joe Brinkley	<a href="mailto:football@cockfield.org.uk">football@cockfield.org.uk</a>
Cockfield Netball Club	Lindsee Summers	<a href="mailto:netball@cockfield.org.uk">netball@cockfield.org.uk</a>
Cockfield Post Office	Barbara Turner	01284 828201
Cockfield Primary School	Trudie Harkin Headteacher	<a href="mailto:admin@cockfield.suffolk.sch.uk">admin@cockfield.suffolk.sch.uk</a>
Community Council Secretary	Janne Cutting-Keyton	<a href="mailto:community.council@cockfield.org.uk">community.council@cockfield.org.uk</a>
Computer Circle, e-news	<a href="#">Neil Ashton</a>	<a href="mailto:computer.circle@cockfield.org.uk">computer.circle@cockfield.org.uk</a>
County Council - Local Member	Robert Lindsay	07738 264087
		<a href="mailto:robert.lindsay@suffolk.gov.uk">robert.lindsay@suffolk.gov.uk</a>
Dentist	Lavenham Dental Practice	01787 247058
	Paul Rolph & Associates	01787 247046
District Council	Babergh offices	0300 1234000
Local Member	Clive Arthey	01787 211316
		<a href="mailto:clive.arthey@babergh.gov.uk">clive.arthey@babergh.gov.uk</a>
Local Member	Margaret Maybury	01787 464358
		<a href="mailto:Margaret.Maybury@babergh.gov.uk">Margaret.Maybury@babergh.gov.uk</a>
Doctors	Long Melford Practice	01787 378226
Earls Meador/Bruffs Line	Rodney Williams	<a href="mailto:earls.meadow@cockfield.org.uk">earls.meadow@cockfield.org.uk</a>
Footpath Warden	Ralph Turner	<a href="mailto:footpaths@cockfield.org.uk">footpaths@cockfield.org.uk</a>
Friends of Cockfield School FOCSA	Mark Aston	<a href="mailto:fosca@cockfield.org.uk">fosca@cockfield.org.uk</a>
Green Links - Village Magazine	Janne Cutting-Keyton	<a href="mailto:green.links@cockfield.org.uk">green.links@cockfield.org.uk</a>
Mini - Bus Hire (Office Hours only)	Carl Brinkley	<a href="mailto:minibus@cockfield.co.uk">minibus@cockfield.co.uk</a>
Parish Council Clerk	Steve Ball	<a href="mailto:parish.council@cockfield.org.uk">parish.council@cockfield.org.uk</a>
Pavilion Administrator (C.C. Council)	Rodney Williams	<a href="mailto:pavilion@cockfield.org.uk">pavilion@cockfield.org.uk</a>
Pharmacy	The Lavenham Pharmacy	01787 247284
Stanningfield & District Agric. Club	David Simpson	<a href="mailto:stannag.club@cockfield.org.uk">stannag.club@cockfield.org.uk</a>
St. Peters Church	Rev. Sharon Potter	01284 828599
Church Wardens	Norman Kelly/David Smith	<a href="mailto:church.warden@cockfield.org.uk">church.warden@cockfield.org.uk</a>
Village Hall - Bookings	June Pettit	<a href="mailto:village.hall@cockfield.org.uk">village.hall@cockfield.org.uk</a>
Secretary	Vera Shepherd	<a href="mailto:village.hall@cockfield.org.uk">village.hall@cockfield.org.uk</a>
Village Recorder	Brenda Dyer	<a href="mailto:recorder@cockfield.org.uk">recorder@cockfield.org.uk</a>
Women's Institute Secretary	Suzanne Veal	<a href="mailto:wi@cockfield.org.uk">wi@cockfield.org.uk</a>